

For a Free Quote:

Web: EnergyPal.com/solar

Call: 1-800-990-3725

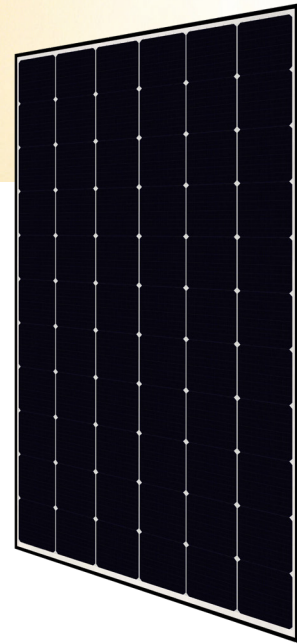
Email: contact@energypal.com

EnergyPal

Solar Panel Guide Specification Data Sheet

**Canadian Solar Inc.
HiDM CS1H-320-345MS
345MS**

Also available on the web at
EnergyPal.com/canadian-solar-inc-solar-panels/345ms



HiDM
HIGH DENSITY MONO PERC MODULE
320 W ~ 345 W
CS1H-320 | 325 | 330 | 335 | 340 | 345MS

MORE POWER

- Maximize the light absorption area, module efficiency up to 20.46 %
- Low temperature coefficient (Pmax): -0.37 % / °C
- Better shading tolerance

MORE RELIABLE

- Lower internal current, lower hot spot temperature
- Minimizes micro-crack impacts
- Heavy snow load up to 5400 Pa, wind load up to 2400 Pa*

15 years enhanced product warranty on materials and workmanship*

25 years linear power output warranty*

*According to the applicable Canadian Solar Limited Warranty Statement.

MANAGEMENT SYSTEM CERTIFICATES*

ISO 9001:2015 / Quality management system
ISO 14001:2015 / Standards for environmental management system
OHSAS 18001:2007 / International standards for occupational health & safety

PRODUCT CERTIFICATES*

IEC 61215 / IEC 61730: VDE / CE / MCS / JET / INMETRO
UL 1703 / IEC 61215 performance: CEC listed (US) / FSEC (US Florida)
UL 1703: CSA / IEC 61701 ED2: VDE / IEC 62716: VDE
UNI 9177 Reaction to Fire: Class 1 / Take-e-way



As there are different certification requirements in different markets, please contact your local Canadian Solar sales representative for the specific certificates applicable to the products in the region in which the products are to be used.

CANADIAN SOLAR INC. is committed to providing high quality solar products, solar system solutions and services to customers around the world. No. 1 module supplier for quality and performance/price ratio in IHS Module Customer Insight Survey. As a leading PV project developer and manufacturer of solar modules with over 38 GW deployed around the world since 2001.

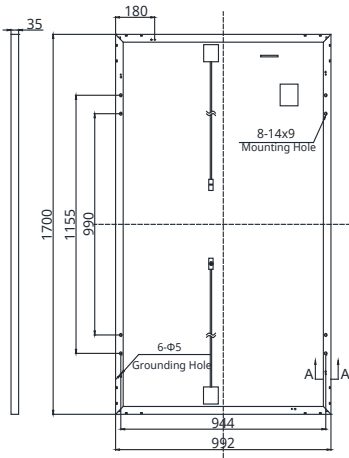
* For detail information, please refer to Installation Manual.

CANADIAN SOLAR INC.

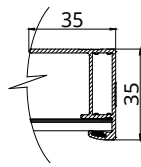
545 Speedvale Avenue West, Guelph, Ontario N1K 1E6, Canada, www.canadiansolar.com, support@canadiansolar.com

ENGINEERING DRAWING (mm)

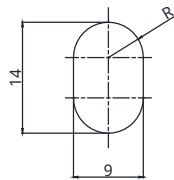
Rear View



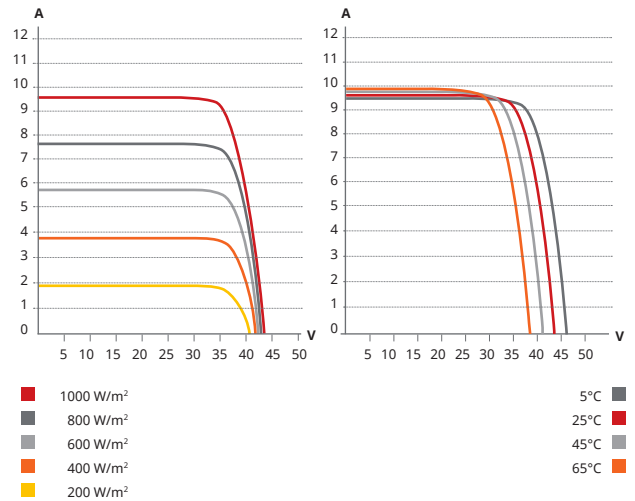
Frame Cross Section A-A



Mounting Hole



CS1H-330MS / I-V CURVES



ELECTRICAL DATA | STC*

CS1H	320MS	325MS	330MS	335MS	340MS	345MS
Nominal Max. Power (Pmax)	320 W	325 W	330 W	335 W	340 W	345 W
Opt. Operating Voltage (Vmp)	36.2 V	36.6 V	37.0 V	37.4 V	37.8 V	38.2 V
Opt. Operating Current (Imp)	8.85 A	8.88 A	8.92 A	8.96 A	9.00 A	9.04 A
Open Circuit Voltage (Voc)	44.0 V	44.1 V	44.2 V	44.3 V	44.5 V	44.6 V
Short Circuit Current (Isc)	9.60 A	9.64 A	9.68 A	9.72 A	9.76 A	9.80 A
Module Efficiency	18.98%	19.27%	19.57%	19.86%	20.16%	20.46%
Operating Temperature	-40°C ~ +85°C					
Max. System Voltage	1500V (IEC) or 1000V (IEC/UL)					
Module Fire Performance	TYPE 1 (UL 1703) or CLASS C (IEC 61730)					
Max. Series Fuse Rating	16 A					
Application Classification	Class A					
Power Tolerance	0 ~ + 5 W					

* Under Standard Test Conditions (STC) of irradiance of 1000 W/m², spectrum AM 1.5 and cell temperature of 25°C.

MECHANICAL DATA

Specification	Data
Cell Type	Mono-crystalline
Dimensions	1700 × 992 × 35 mm (66.9 × 39.1 × 1.38 in)
Weight	19.2 kg (42.3 lbs)
Front Cover	3.2 mm tempered glass
Frame	Anodized aluminium alloy
J-Box	IP68, 3 bypass diodes
Cable	4.0 mm ² (IEC), 12 AWG (UL)
Cable Length (Including Connector)	1350 mm (53.1 in)
Connector	T4 series or H4 UTX or MC4-EVO2
Per Pallet	30 pieces
Per Container (40' HQ)	780 pieces

ELECTRICAL DATA | NMOT*

CS1H	320MS	325MS	330MS	335MS	340MS	345MS
Nominal Max. Power (Pmax)	237 W	241 W	244 W	248 W	252 W	255 W
Opt. Operating Voltage (Vmp)	33.5 V	33.9 V	34.2 V	34.6 V	35.0 V	35.3 V
Opt. Operating Current (Imp)	7.07 A	7.11 A	7.14 A	7.17 A	7.20 A	7.23 A
Open Circuit Voltage (Voc)	41.1 V	41.2 V	41.3 V	41.4 V	41.6 V	41.7 V
Short Circuit Current (Isc)	7.75 A	7.78 A	7.81 A	7.85 A	7.88 A	7.91 A

* Under Nominal Module Operating Temperature (NMOT), irradiance of 800 W/m² spectrum AM 1.5, ambient temperature 20°C, wind speed 1 m/s.

TEMPERATURE CHARACTERISTICS

Specification	Data
Temperature Coefficient (Pmax)	-0.37 % / °C
Temperature Coefficient (Voc)	-0.29 % / °C
Temperature Coefficient (Isc)	0.05 % / °C
Nominal Module Operating Temperature	43±3 °C

PARTNER SECTION



The specifications and key features contained in this datasheet may deviate slightly from our actual products due to the on-going innovation and product enhancement. Canadian Solar Inc. reserves the right to make necessary adjustment to the information described herein at any time without further notice. Please be kindly advised that PV modules should be handled and installed by qualified people who have professional skills and please carefully read the safety and installation instructions before using our PV modules.

CANADIAN SOLAR INC.

545 Speedvale Avenue West, Guelph, Ontario N1K 1E6, Canada, www.canadiansolar.com, support@canadiansolar.com