

For a Free Quote:

Web: EnergyPal.com/solar

Call: 1-800-990-3725

Email: contact@energypal.com

EnergyPal

Solar Panel Guide Specification Data Sheet

**Guangdong Haotech New Energy Technology Co.,
Ltd.**

HT-P-70-115

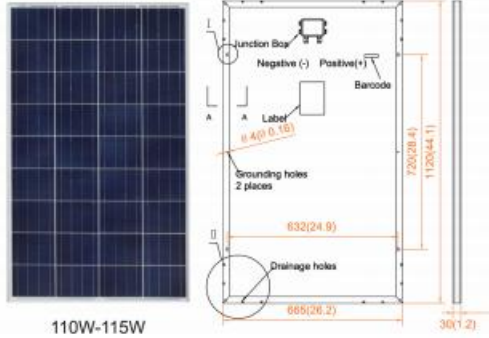
75P-12

Also available on the web at
EnergyPal.com/guangdong-haotech-new-energy-technology-co-ltd-solar-panels/75p-12

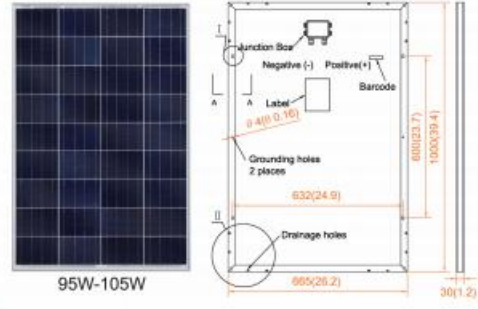
70~115 Watt



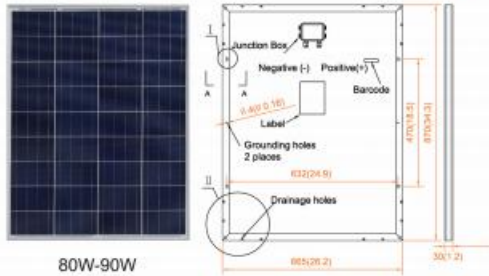
*BLACK FRAME/BLACK BACK-SHEET PRODUCTS ARE AVAILABLE UPON REQUEST



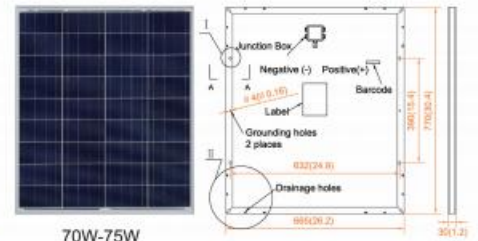
110W-115W



95W-105W



80W-90W

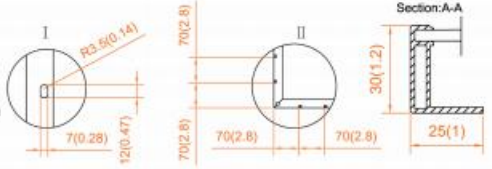


70W-75W

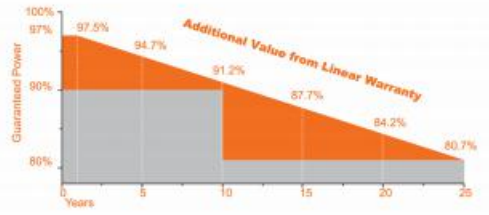
MANAGEMENT SYSTEM

- ISO 9001: Quality management system
- ISO 14001: Standard for environmental management system
- OHSAS 18001: International standard for occupational health and safety assessment system

PRODUCT CERTIFICATES



*All Dimensions in mm(Inch)



WARRANTY

5 Years

Material & Craft
Quality
assurance

10 Years

50% Output
Power
guarantee

25 Years

80% Output
Power
guarantee

Electrical Characteristics (STC)

Module Type	CST70P-12	CST75P-12	CST80P-12	CST85P-12	CST90P-12
Maximum Power- Pmax(W)	70	75	80	85	90
Open Circuit Voltage - Voc(V)	22.2	22.4	22.2	22.4	22.6
Short-Circuit Current - Isc(A)	4.15	4.40	4.75	4.99	5.23
Voltage at Pmax - Vmp(V)	18.2	18.4	18.2	18.4	18.6
Current at Pmax - Imp(A)	3.85	4.08	4.40	4.62	4.84
Module Efficiency - η (%)	13.67	14.65	13.83	14.69	15.56

Module Type	CST95P-12	CST100P-12	CST105P-12	CST110P-12	CST115P-12
Maximum Power- Pmax(W)	95	100	105	110	115
Open Circuit Voltage - Voc(V)	22.2	22.4	22.6	22.2	22.4
Short-Circuit Current - Isc(A)	5.64	5.87	6.10	6.53	6.75
Voltage at Pmax - Vmp(V)	18.2	18.4	18.6	18.2	18.4
Current at Pmax - Imp(A)	5.22	5.43	5.85	6.04	6.25
Module Efficiency - η (%)	14.29	15.04	15.79	14.77	15.44

STC: Irradiance 1000W/m², Cell Temperature 25 °C, Air Mass 1.5
Power measurement tolerance 0+3%

Mechanical Specifications

Module Type	CST110P/115P-12	CST95P-105P-12	CST80P-90P-12	CST70P/75P-12
External Dimensions	1120*865*30mm	1000*865*30 mm	870*865*30mm	770*865*30 mm
Weight	8.4kg	7.5 kg	6.5kg	5.7 kg
Poly Solar Cells	117*156mm (36pcs)	104*156mm (36pcs)	90*156mm (36pcs)	78*156mm (36pcs)
Front Glass	3.2 mm tempered, low iron	3.2 mm tempered, low iron	3.2 mm tempered, low iron	3.2 mm tempered, low iron
Frame	Anodized aluminum alloy	Anodized aluminum alloy	Anodized aluminum alloy	Anodized aluminum alloy
Junction Box	IP67	IP67	IP67	IP67
Mechanical Load	5400 Pa	5400 Pa	5400 Pa	5400 Pa

Packing Configuration

Module Type	CST110P/115P-12	CST95P-105P-12	CST80P-90P-12	CST70P/75P-12
Carton Dimensions	1135*680*175mm	1015*680*175mm	885*680*175 mm	785*680*175 mm
Pallet Dimensions	1400*1150*2170mm	1400*1100*2160mm	1800*1100*2170mm	1600*1100*2170mm
Pallet Weight	1074kg	998kg	1264kg	1115kg
Pieces/Pallet	120(5pcs/carton)	120(5pcs/carton)	180(5pcs/carton)	180(5pcs/carton)

I-V Curve (CST100P-12)

