

For a Free Quote:

Web: EnergyPal.com/solar

Call: 1-800-990-3725

Email: contact@energypal.com

EnergyPal

Solar Panel Guide Specification Data Sheet

**AE Solar
AEXXP6-60 270-290W (AU)
AE270P6-60**

Also available on the web at
EnergyPal.com/ae-solar-solar-panels/ae270p6-60

AEXXP6-60

AE SOLAR High Efficiency Polycrystalline Solar Module
270-290W



Approved Technology

Approved practice for different operating conditions



Positive Tolerance

Positive tolerance brings more power for free



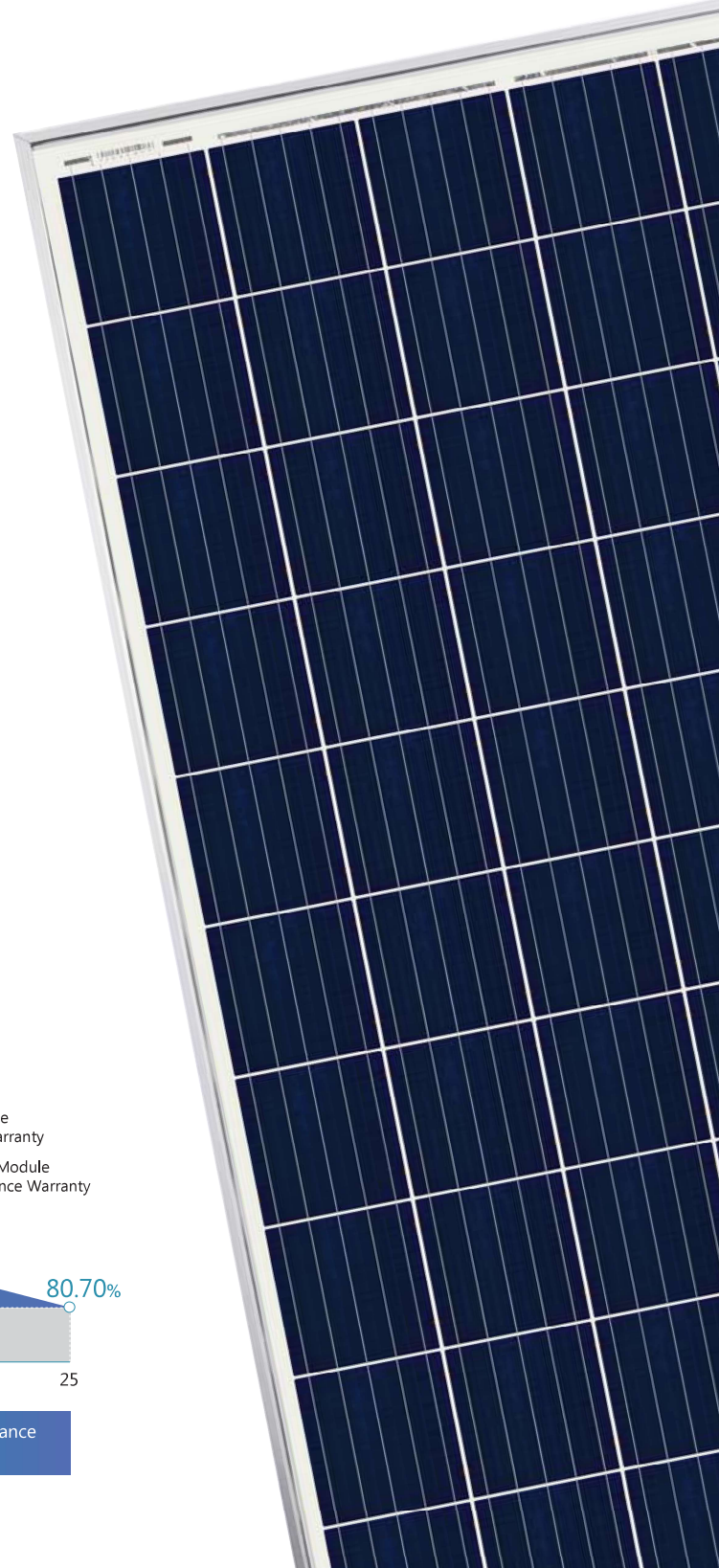
Mechanical Load Endurance

Excellent mechanical load resistance: wind loads (2400Pa) & snow loads (5400Pa)

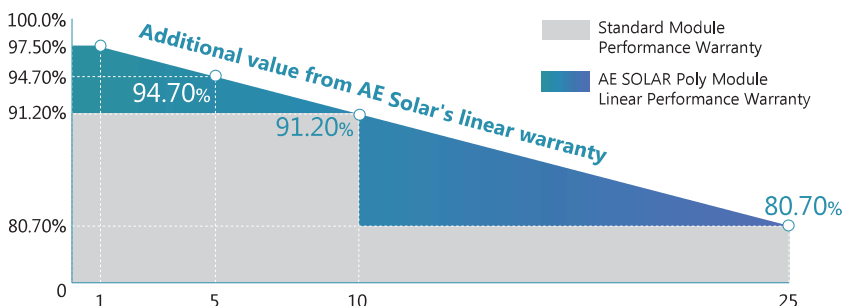


Guaranteed Reliability Against Harsh Environment

Due to Complicated Quality control system, offer survival solar module in harsh environment



LINEAR PERFORMANCE WARRANTY



12years Product Material & Workmanship

25years Linear Performance Warranty

AE SOLAR High Efficiency Polycrystalline Solar Module

ELECTRICAL DATA @ STC*		AE270P6-60	AE275P6-60	AE280P6-60	AE285P6-60	AE290P6-60
Peak Power (Pmax)	(W)	270	275	280	285	290
Maximum Power Voltage (Vmp)	(V)	31.58	31.87	32.15	32.43	32.70
Maximum Power Current (Imp)	(A)	8.55	8.63	8.71	8.79	8.87
Open-circuit Voltage (Voc)	(V)	37.87	38.14	38.42	38.69	38.98
Short-circuit Current (Isc)	(A)	9.13	9.20	9.27	9.35	9.42
Module Efficiency	(%)	16.61	16.92	17.23	17.54	17.84
Operating Temperature		-40°C~+85°C				
Maximum System Voltage		1000V				
Maximum Series Fuse Rating		15A				
Application Class		Class A				
Power Tolerance		0~+3%				

*STC (Standard Test Condition): Irradiance 1000W/ m², Module Temperature 25°C, AM 1.5

ELECTRICAL DATA @ NMOT*		AE270P6-60	AE275P6-60	AE280P6-60	AE285P6-60	AE290P6-60
Peak Power (Pmax)	(W)	200	204	207	211	215
MPP Voltage (Vmp)	(V)	29.15	29.42	29.68	29.93	30.18
MPP Current (Imp)	(A)	6.86	6.93	6.99	7.05	7.12
Open Circuit Voltage (Voc)	(V)	35.58	35.83	36.09	36.35	36.66
Short Circuit Current (Isc)	(A)	7.40	7.45	7.51	7.57	7.60

*Under Nominal Module Operating Temperature (NMOT), Irradiance of 800W/ m², Spectrum AM 1.5, Ambient Temperature 20°C, Wind Speed 1m/s

TEMPERATURE CHARACTERISTICS		
Temperature coefficient of Pmax		-0.41%/°C
Temperature coefficient of Voc		-0.33%/°C
Temperature coefficient of Isc		0.05%/°C
NMOT		43±3°C

MECHANICAL DATA		
Cell Type		Poly-Crystalline, 6" inch
Cell Arrangement		60pcs (6×10)
Dimension (L×W×H)		1640×991×35mm
Weight		18.2kg
Front Cover		3.2mm Tempered Glass
Frame		Anodized Aluminium Alloy
Junction Box		IP67, 3 Bypass Diodes
Cable Type		4mm ²
Length of Cable		1000mm
Connector		Jiaming:PV-JM601

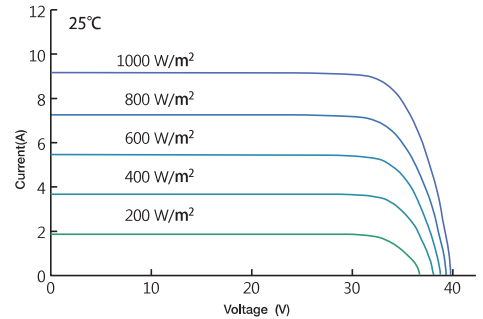
PACKING MANNER		
Packing Type		40HQ
Piece/Pallet		30
Pallet/Container		28
Piece/Container		840

*The specification and key features described in this datasheet may deviate slightly and are not guaranteed. Due to ongoing innovation, R&D enhancement, AE ALTERNATIVE ENERGY GmbH Reserves the right to make any adjustment to the information described herein at any time without notice. Please always obtain the most recent version of the datasheet which shall be duly incorporated into the binding contract made by the parties governing all transactions related to the purchase and sale of the products described herein.

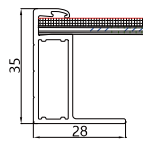
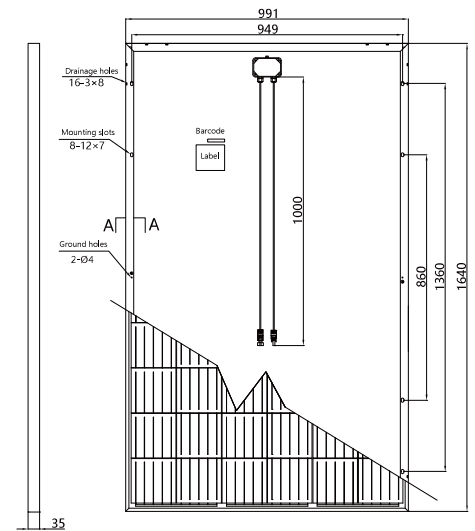
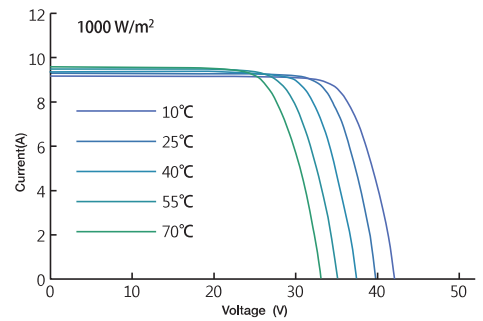
*Power measurement tolerance: ±3%
 *Voc measurement tolerance: ±3%
 *Isc measurement tolerance: ±3%

*Modules Shipped to AU are made in China

Current-Voltage Curve under different irradiance



Current-Voltage Curve under different working temperatures



Section A-A Dimension (unit: mm)

Version 2019.08 © AE SOLAR All Rights Reserved.