

**For a Free Quote:**

Web: [EnergyPal.com/solar](http://EnergyPal.com/solar)

Call: 1-800-990-3725

Email: [contact@energypal.com](mailto:contact@energypal.com)

# EnergyPal

## **Solar Panel Guide Specification Data Sheet**

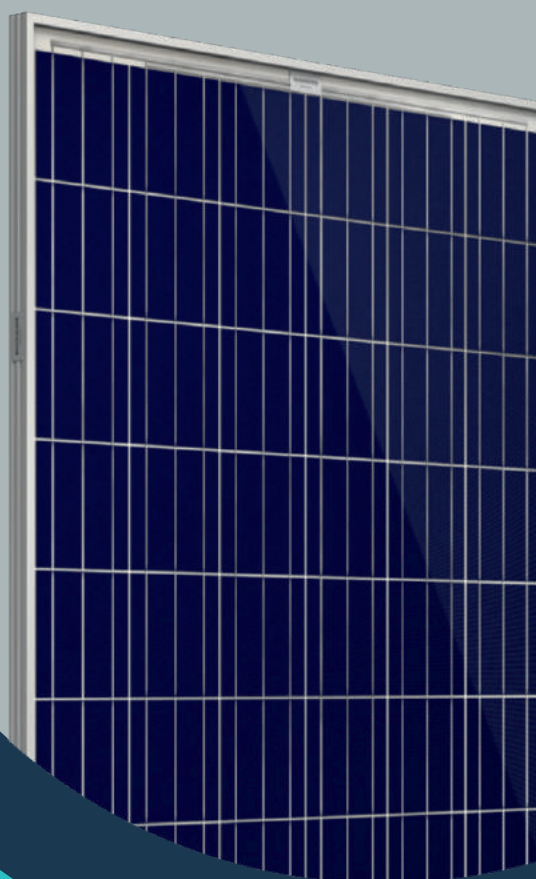
**Ankara Solar  
AS-P72 310W-345W  
AS-P72 325W**

Also available on the web at  
[EnergyPal.com/ankara-solar-solar-panels/as-p72-325w](http://EnergyPal.com/ankara-solar-solar-panels/as-p72-325w)



# ANKARA<sup>®</sup> SOLAR

CAPITOL OF SOLAR ENERGY



## AS-P72

310 - 345 W



IEC 61215 - IEC 61730 - IEC 61701 - IEC 62716 - ISO9001:2008 - ISO14001:2004 - OHSAS18001:2007

**%17.78**

Module Efficiency

**30 YEARS**

Linear Power Warranty

**12 YEARS**

Product Warranty

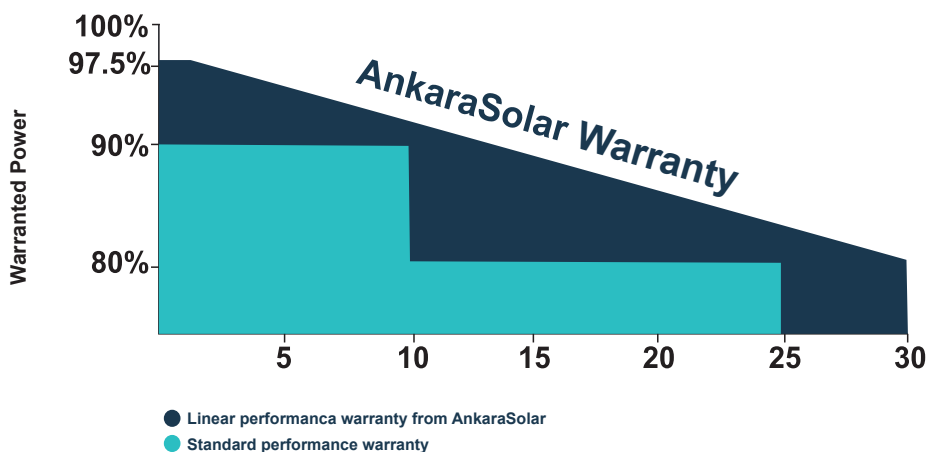
**12** 12 YEARS PRODUCT WARRANTY  
12 years 91.2% of the nominal power output.

**30** 30 YEARS LINEAR POWER WARRANTY  
30 years 80.6% of the nominal power output.

**+5** POSITIVE POWER TOLERANCE  
Positive power tolerance of 0~+5W

**PID FREE**  
IEC 62804 Potential induced degradation (PID) resistance.

**5400 pa**  
Withstand wind loads up to 2400Pa  
Withstand snow loads up to 5400Pa



Made in Turkey

# AS-P72 310W-345W

## ELECTRICAL CHARACTERISTICS AT (STC)

Nominal Power (Pmax)	310W	315W	320W	325W	330W	335W	340W	345W
Open Circuit Voltage (Voc)	45.5V	45.6V	45.7V	45.8V	45.9V	46.1V	46.3V	46.5V
Short Circuit Current (Isc)	8.85A	8.93A	9.00A	9.08A	9.16A	9.44A	9.52A	9.60A
Voltage at Nominal Power (Vmp)	36.9V	37.0V	37.1V	37.2V	37.3V	37.5V	37.7V	37.9V
Current at Nominal Power (Imp)	8.41A	8.52A	8.63A	8.74A	8.85A	8.94A	9.02A	9.11A
Module Efficiency (%)	15.98	16.23	16.49	16.75	17.01	17.26	17.52	17.78
Operating Temperature	-40°C to +85°C							
Maximum System Voltage	1000V DC							
Maximum Series Fuse Rating	15A							

STC: Irradiance 1000W/m<sup>2</sup>, Cell temperature 25°C, AM1.5

## ELECTRICAL CHARACTERISTICS AT (NOCT)

Nominal Power (Pmax)	228W	232W	236W	239W	243W	248W	252W	256W
Open Circuit Voltage (Voc)	41.9V	42.0V	42.0V	42.1V	42.2V	42.4V	42.6V	42.8V
Short Circuit Current (Isc)	7.17A	7.23A	7.29A	7.35A	7.42A	7.65A	7.71A	7.78A
Voltage at Nominal Power (Vmp)	33.6V	33.7V	33.8V	33.9V	34.0V	34.1V	34.3V	34.5V
Current at Nominal Power (Imp)	6.79A	6.89A	6.98A	7.05A	7.15A	7.28A	7.35A	7.42A

NOCT: Irradiance 800W/m<sup>2</sup>, Ambient temperature 20°C, Wind Speed 1m/s

## MECHANICAL CHARACTERISTICS

Cell type	Polycrystalline 156x156mm veya 156.75x156.75mm
Number of cells	72 (6x12)
Module dimensions	1956x992x40mm
Weight	23 kg
Front cover	3.2mm Tempered Glass EN12150
Frame	Anodized Aluminum Alloy
Junction box	Ip65, 3 diodes
Cable	4mm <sup>2</sup> 900-1000mm
Connector	Mc4 or MC4 compatible - IP67
Cell Encapsulation	EVA (Ethylene - Vinyl - Acetate)

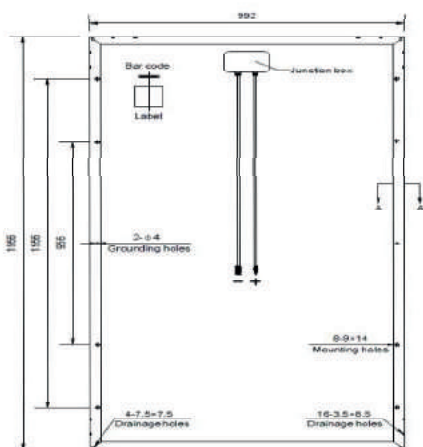
## TEMPERATURE CHARACTERISTICS

Nominal Operating Cell Temperature (NOCT)	45°C ± 2°C
Temperature Coefficients of Pmax	-0.41%/°C
Temperature Coefficients of Voc	-0.31%/°C
Temperature Coefficients of Isc	0.05%/°C

## PACKAGING

Standard packaging	27 pcs/pallet
Module quantity per 20' container	270 pcs
Module quantity per 40' container	594 pcs

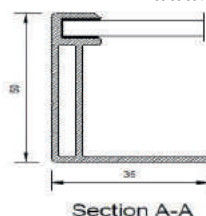
## ENGINEERING DRAWINGS IV



Unit: mm



info@ankarasolar.com.tr  
www.ankarasolar.com.tr



## IV CURVES

