

For a Free Quote:

Web: **EnergyPal.com/solar**

Call: **1-800-990-3725**

Email: **contact@energypal.com**

EnergyPal

Solar Panel Guide Specification Data Sheet

**Alpha Solar Planet GmbH
ASP HM6-96 Series 500W-520W
ASP505HM6-96**

Also available on the web at
EnergyPal.com/alpha-solar-planet-gmbh-solar-panels/asp505hm6-96

MonoPower Large Cells

ASP HM6-96 Series 500W-520W

Monocrystalline PV-module



QUALITY & RELIABILITY

Best raw materials, optimized production process and accurate testing makes the quality difference



GERMAN ENGINEERING

Best design by the art of German engineering



SAVE INVESTMENT

Product warranty of 12 years and performance warranty of 25 years



POSITIVE PERFORMANCE TOLERANCE

Up to +5 W plus-tolerance on output



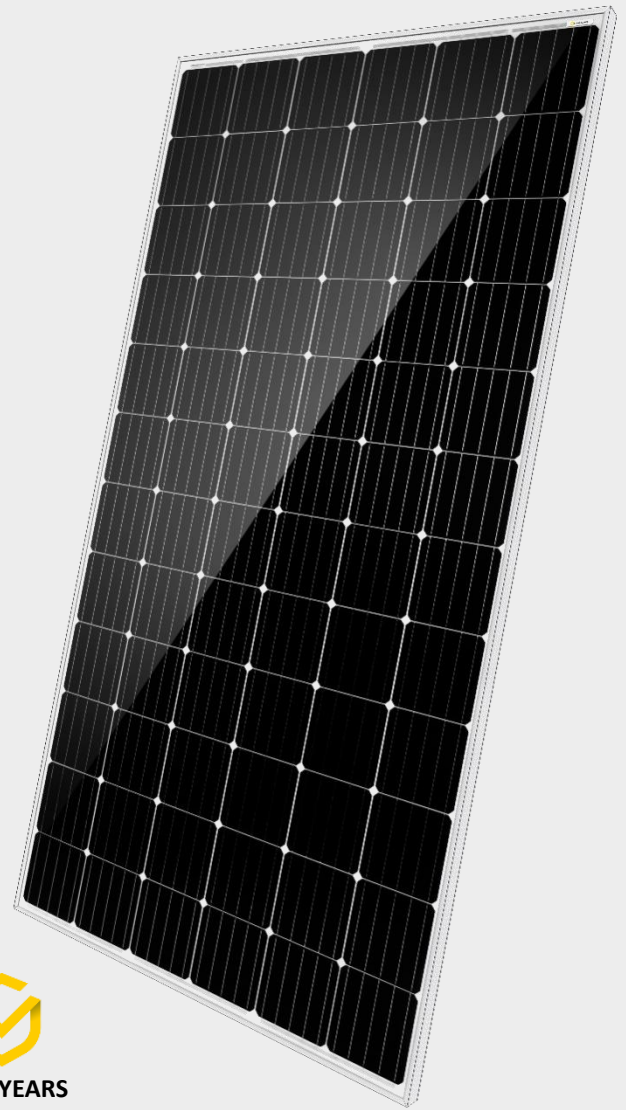
FOR ALL ENVIRONMENTAL CONDITIONS

Resistant against PID, sand, salt and ammonia



STABLE AND STRONG

Capable to bear heavy snow loads up to 5400 Pa and wind loads up to 2400 Pa

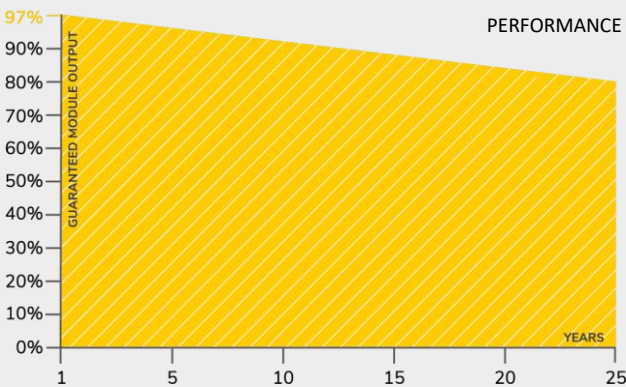


12 YEARS
PRODUCT WARRANTY

OUR PERFORMANCE GUARANTEE



25 YEARS
PERFORMANCE GUARANTEE



CERTIFICATES

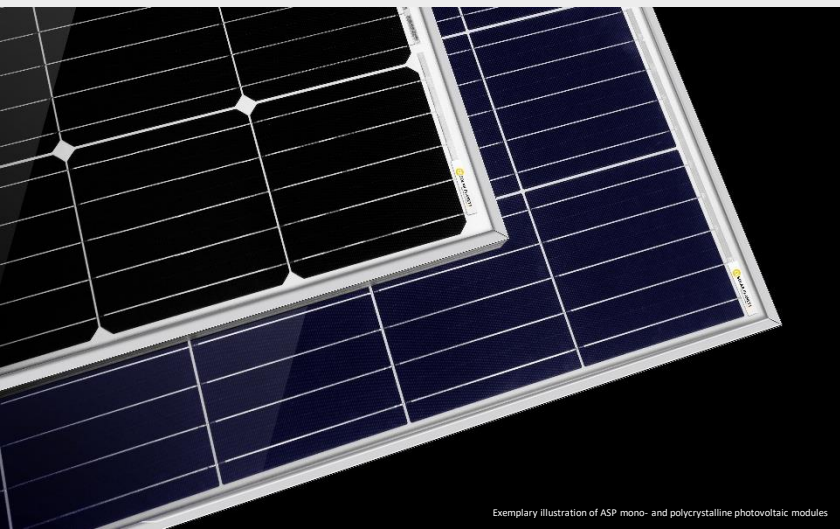
SGS
TÜV
SAAR

IEC 61215
IEC 61730
PERIODICAL
INCEPTION

SGS

PID RESISTANT
SALT MIST RESISTANT
SAND RESISTANT
CORROSIVE GAS (NH₃)

CE CEC



α SOLAR PLANET
Enjoy the quality difference

MonoPower Large Cells

ASP HM6-96 Series 500W-520W

TECHNICAL DATA

		ASP500HM6-96	ASP505HM6-96	ASP510HM6-96	ASP515HM6-96	ASP520HM6-96
Maximum power	P _{max} (Wp)	500	505	510	515	520
Maximum power voltage	V _{mp} (V)	52.30	52.71	53.18	53.65	54.05
Maximum power current	I _{mp} (A)	9.56	9.58	9.59	9.60	9.62
Open-circuit voltage	V _{oc} (V)	63.59	64.17	64.74	65.31	65.81
Short-circuit current	I _{sc} (A)	10.08	10.09	10.10	10.11	10.13
Module efficiency	%	19.05	19.24	19.43	19.63	19.82
Power tolerance	P _{max} (W)	0 / +5				
Maximum system voltage DC	V	1000				
Operating temperature	°C	-40 to +85				
Temperature coefficients of P _{max}	%/°C	-0.37				
Temperature coefficients of V _{oc}	%/°C	-0.28				
Temperature coefficients of I _{sc}	%/°C	0.048				
Nominal operating cell temp. (NOCT)	°C	45 ± 2				

The electrical data apply to standard test conditions (STC): Irradiance of 1000 W/m² with spectrum AM 1.5 and a cell temperature of 25°C.

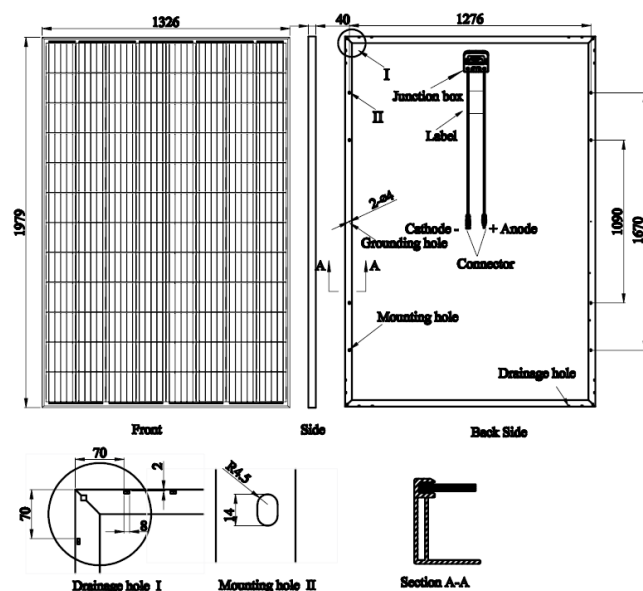
MATERIAL CHARACTERISTICS

Cell type	Monocrystalline 158.75 x 158.75 mm
No. of cells	96 (8 x 12)
Dimensions	1979 x 1326 x 40 mm
Weight	30.0 kg
Junction box	IP 67 rated
Output cable	4.0 mm ² , 1200 mm length
Connector type	MC 4 / MC 4 compatible
Hail resistance	Max. Ø 28 mm, at 23 m/s
Wind load	2400 Pa / 244 kg / m ²
Mechanical load	5400 Pa / 550 kg / m ²

PACKING INFORMATION

Packing configuration	27 pcs / double pallet
Loading capacity	297 pcs / 40 HQ
Size / pallet	2010 x 1120 x 1450 mm
Weight	865 kg / pallet

DRAWINGS



Alpha Solar Planet GmbH
Schwalbenweg 1 g, 86343 Königsbrunn

Tel.: +49 8231 99190 70
Fax: +49 8231 99190 89

E-mail: info@a-s-p.solar
Web: www.a-s-p.solar

