

For a Free Quote:

Web: EnergyPal.com/solar

Call: 1-800-990-3725

Email: contact@energypal.com

EnergyPal

Solar Panel Guide Specification Data Sheet

Baoding Billion Power Technology Co., Ltd.

BP-M-T95-T105

BP-M-T100

Also available on the web at

EnergyPal.com/baoding-billion-power-technology-co-ltd-solar-panels/bp-m-t100



BILLION POWER

Your one stop Supplier for all kinds of
Solar Modules and BOS.



Scan this quickmark, to visit our website.



BP-M-T series Amorphous Thin Film Solar Module

BP-M-T Series products represent the latest advancements in Amorphous Silicon Thin Film Photovoltaic Modules technology. BP-M-T Solar Films use the world famous Oerlikon solar production line, and achieves a prominent performance, high quality and stable manufacturing process for the large modules using advanced PECVD, LPCVD, Laser Scribing and Assembly technology. BP-M-T Films aims to provide the world with low-cost and high-tech renewable, sustainable, and clean alternative energy through continuous innovation.



Advantages:

- Prominent performance at high temperature and weak sunlight
- Cost effective and economic energy production by a high level of efficiency
- Environmentally friendly
- Guaranteed steady production quality by manufacture in the worldwide latest and most up to date Oerlikon production facility
- Flexible installation, perfect achieving building integrated Photovoltaics

Solar power :

Photovoltaic (PV)

...direct conversion of sunlight into electricity through photoelectric effect. PV supports broad functional application from roof-tops to large farms at competitive energy value





Electrical Parameters

Power output (W) Wp	BP-M-T95	BP-M-T100	BP-M-T105
Open circuit voltage (V) Voc	119.67	119.9	120.14
Short circuit current (I) Isc	1.41	1.42	1.44
Peak power voltage (V) Vmp	88.37	88.63	89.74
Peak power current (A) Imp	1.08	1.13	1.17
Maximum system voltage	1000V D . C . (TUV) : 600V D . C . (UL)		
Power tolerance	±3.0%		
Maximum over-current protection value	3A		
Standard test condition	STC : 1000W/m ² , AM 1.5, 25 ° C		

Mechanical Parameters

Product transmittance	/
Length (mm)	1300mm ± 2mm
Width (mm)	1100mm ± 2mm
Thickness (mm)	7.9mm ± 0.8mm
Weight (kg)	26Kg ± 2Kg
Maximum system voltage	1000V D . C .
Maximum load weight	≥2400P

Temperature Characteristics

Temperature characteristics of Pmpp	-0.23% / ° C
Temperature characteristics of Voc	-0.3%/° C
Temperature characteristics of Isc	+0.08%/° C
Operating Temperature	-40~85 ° C



Mechanical Specifications

Module structure	Glass/PVB/Glass
Junction box	MC4, IP65
Cable diameter	Length: 900mm, Cross section:2.5mm ²
Connector type	MC4 , IP65
Application classification	A

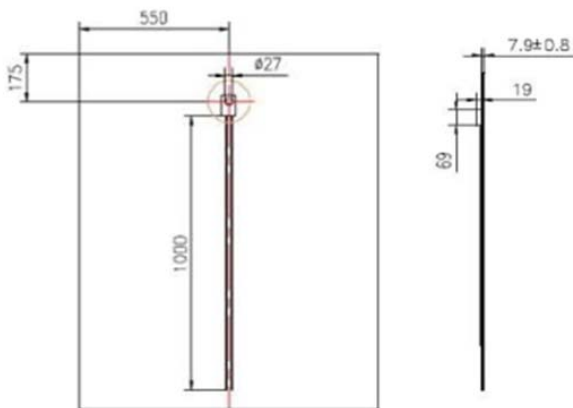
Packaging and logistics information

Packing Num/Box	36pcs
Packing Num/Pallet	36pcs
General weight/Pallet	1000kg

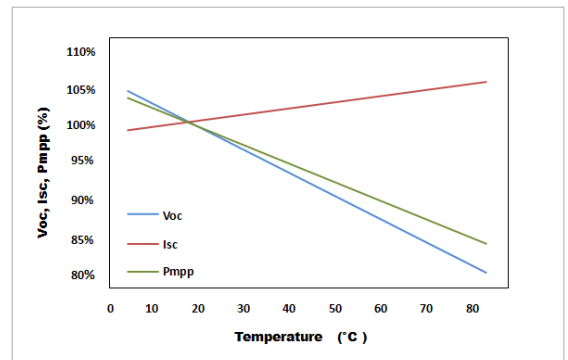
Quality Assurance

Product standards	TUV , CE, CQC, SGS
Product workmanship	5 years
90% of minimum stabilized rated output power(STC)	10 years
80% of minimum stabilized rated output power(STC)	25 years

Unit:mm



IV curve under different illumination





Application:

➤ PV System

Thin film can face all sides with better performance, Grid connected, Centralized project with lowest cost and high return

Ground mounted PV system



Commercial Rooftop PV system



Residential Rooftop PV system



➤ BIPV

Integrated on greenhouse, Take better use of lands, Fully integrated on roof or façade, Semi-transparent or transparent façade

BIPV agriculture greenhouse



BIPV



BIPV





➤ PV Plant



Capacity: 3.7MW
Type: Ground Mounted
Location: Schonewalde,
Germany



Capacity: 285KW
Type: Rooftop
Location: California America



Capacity: 1MW
Type: Ground Mounted
Location: Bolangir India



Capacity: 1MW
Type: Ground Mounted
Location: Yunnan, China



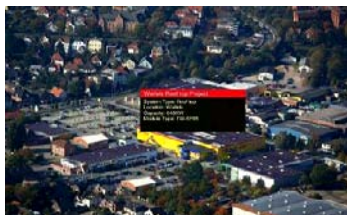
Capacity: 92.16KW
Type: Rooftop
Location: Dusseldorf,
Germany



Capacity: 92.16KW
Type: Rooftop
Location: Dusseldorf,
Germany



Capacity: 485KW
Type: Rooftop
Location: Magdeburg
Germany



Capacity: 648KW
Type: Rooftop
Location: Oldenburg
Germany