

For a Free Quote:

Web: EnergyPal.com/solar

Call: 1-800-990-3725

Email: contact@energypal.com

EnergyPal

Solar Panel Guide Specification Data Sheet

BQ Solartech Co., Ltd.

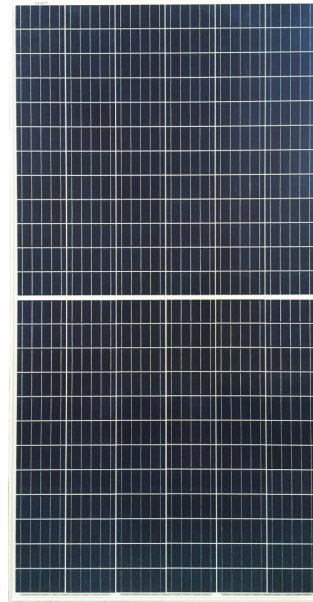
BQ-144-6 335-355W

BQ-144-6-350P

Also available on the web at
EnergyPal.com/bq-solartech-co-ltd-solar-panels/bq-144-6-350p



BQ-144-6
335-355w



KEY FEATURES



Global, Tier 1 bankable brand, with independently certified state-of-the-art automated manufacturing



Industry leading lowest thermal co-efficient of power



Excellent PID resistance



Outstanding power output capability at low irradiance



Module Imp binning radically reduces string mismatch losses



Triple 100% Electroluminescence (EL) tests minimize



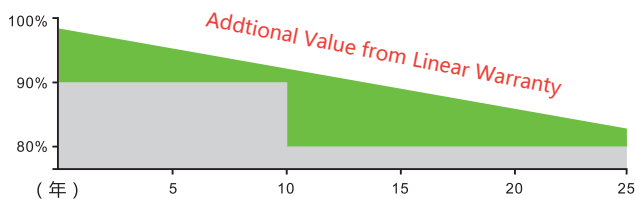
Warranted reliability and stringent quality assurances well beyond certified requirements



Certified to withstand severe environmental conditions

- ◆ Anti-reflective & anti-soiling surface minimise power loss from dirt and dust
- ◆ Severe salt mist, ammonia & blown sand resistance, for seaside, farm and desert environments
- ◆ Excellent mechanical load 2400Pa & snowload 5400Pa resistance

Warranty



12
Years

Guarantee on product material and workmanship

25
Years

linear power output warranty

Product Certificates



BQ SOLARTECH CO., LTD

+86 13758135482 sales@bqsolartech.com

www.bqsolartech.com

Electrical Data(STC)

Model Number	BQ-144-6-335P	BQ-144-6-340P	BQ-144-6-345P	BQ-144-6-350P	BQ-144-6-355P
Rated Power in Watts-Pmax(Wp)	335	340	345	350	355
Open Circuit Voltage-Voc(V)	46.10	46.30	46.50	46.7	46.90
Short Circuit Current-Isc(A)	9.30	9.40	9.50	9.60	9.70
Maximum Power Voltage-Vmpp(V)	38.60	38.70	38.80	38.95	39.10
Maximum Power Current-Impp(A)	8.70	8.80	8.90	9.00	9.10
Module Efficiency (%)*	16.8	17.1	17.3	17.6	17.8

Irradiance 1000 W/m², Cell Temperature 25° C, Air Mass AM1.5 according to EN60904-3.

* Module Efficiency (%): Round-off to the nearest number

Electrical Data(NMOT)

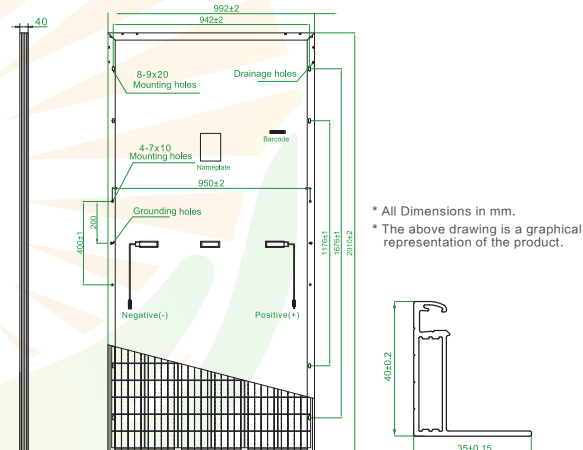
Model Number	BQ-144-6-335P	BQ-144-6-340P	BQ-144-6-345P	BQ-144-6-350P	BQ-144-6-355P
Maximum Power-Pmax (Wp)	250.4	254.0	257.5	261.4	265.3
Open Circuit Voltage-Voc (V)	42.40	42.60	42.80	43.00	43.10
Short Circuit Current-Isc (A)	7.63	7.71	7.79	7.87	7.95
Maximum Power Voltage-Vmpp (V)	35.30	35.40	35.50	35.60	35.80
Maximum Power Current-Impp (A)	7.09	7.17	7.25	7.34	7.42

NMOT: Irradiance at 800 W/m², Ambient Temperature 20° C, Wind Speed 1 m/s.

Mechanical Data

Solar cells	Polycrystalline,5BB
Cell configuration	144片(6×12+6×12)
Module dimensions	2010×992×40mm
Weight	23kg
Superstrate	High Transmission, Low Iron, Tempered ARC Glass
Substrate	White Back-sheet
Frame	Anodized Aluminium Alloy type 6063T5, Silver Color
J-Box	Potted, IP68,1500VDC,3 Schottky bypass diodes
Cables	4.0mm ² (12AWG) ,Positive(+)-270mm, Negative(-)-270mm
Connector	Risen Twinsel PV-SY02,1P68

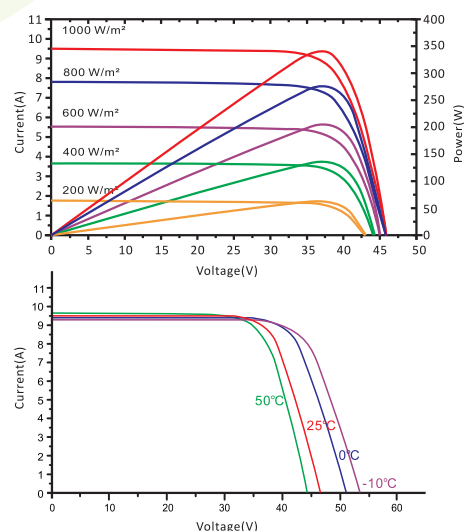
Technical drawing



Temperature & Maximum Ratings

NMOT	45°C±2°
Temperature Coefficient of Voc	-0.32%/°C
Temperature Coefficient of Isc	0.055%/°C
Temperature Coefficient of Pmax	-0.39%/°C
Operational Temperature	-40°C~+85°C
Maximum System Voltage	1500VDC
Max Series Fuse Rating	20A
Limiting Reverse Current	20A

I-V Curve



Packaging Configuration

	17.5m transport truck	13m transport truck
Number of modules per container	918	648
Number of modules per pallet	27	27
Number of pallets per container	34	24
Packaging box dimensions (LxWxH)in mm	2040x1130x1130	2040x1130x1130
Box gross weight[kg]	670	670

BQ SOLARTECH CO., LTD

+86 13758135482 sales@bqsolartech.com

www.bqsolartech.com