

For a Free Quote:

Web: **EnergyPal.com/solar**

Call: **1-800-990-3725**

Email: **contact@energypal.com**

EnergyPal

Solar Panel Guide Specification Data Sheet

BQ Solartech Co., Ltd.

BQ-MONO60

BQ320-60PM

Also available on the web at
EnergyPal.com/bq-solartech-co-ltd-solar-panels/bq320-60pm



www.bqltd.com
www.bqsolartech.com
sales@bqsolartech.com

BQ-MONO60



BQ-MONO60

315-330W

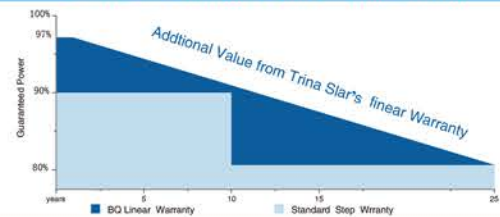
Product With Green Energy



Certificates



BQ Linear Warranty • Standard Step Warranty
10 Years Product Warranty • 25 years Linear Power Warranty



KEY FEATURES



POWER RANGE

0~+3% Plus Power Tolerance



PID RESISTANT



SALT MIST RESISTANT



AMMONIA RESISTANT



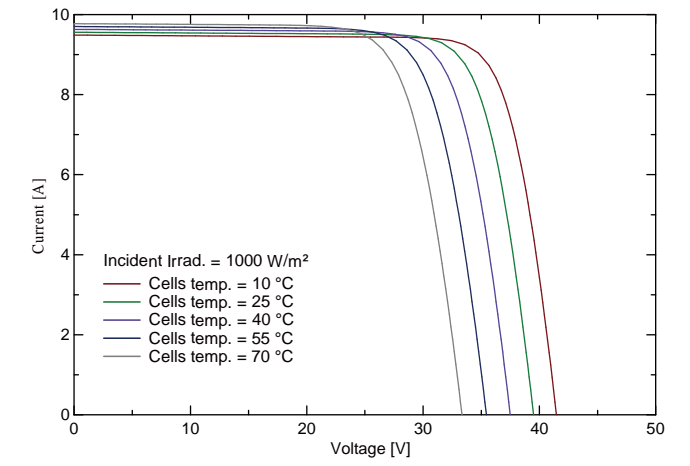
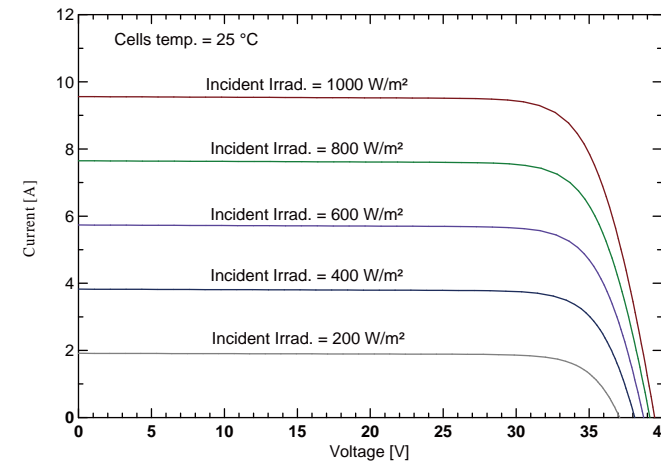
HIGH STRENGTHENED DESIGN

2400Pa Wind Pressure, 5400Pa Snow Crush Tolerable

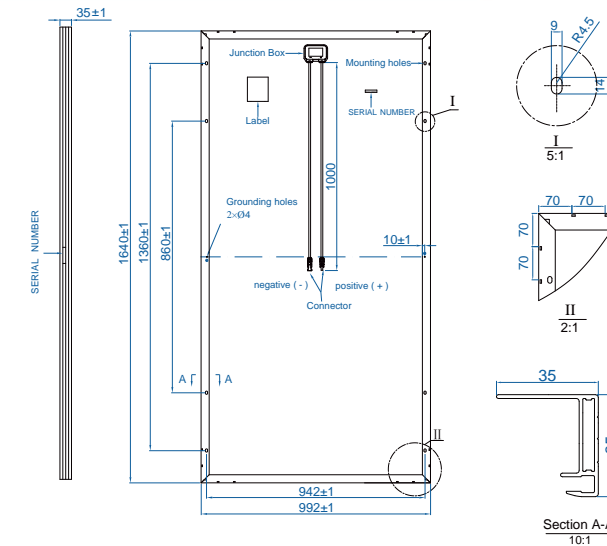
Electrical Characteristics

Item NO.		BQ315-60PM	BQ320-60PM	BQ325-60PM	BQ330-60PM
Nominal power	Pm (WP)	315	320	325	330
Open circuit voltage	Voc (V)	40.53	40.78	41.04	41.3
Short-circuit current	Isc (A)	10.11	10.18	10.25	10.32
Voltage at max power	Vmp (V)	32.89	33.17	33.44	33.75
Current at max power	Imp (A)	9.58	9.65	9.72	9.78
Module efficiency	(%)	19.1	19.4	19.7	20.0
System voltage	(V)	1500 V			
Temp. coefficient Voc	(%/°C)	-0.30%/°C			
Temp. coefficient Isc	(%/°C)	+0.05%/°C			
Temp. coefficient Pm	(%/°C)	-0.39%/°C			
Operating temp.	(°C)	-40~+85°C			
NOCT	(°C)	45°C (±2°C)			

ELECTRICAL CHARACTERISTICS



PHYSICAL CHARACTERISTICS



MECHANICAL SPECIFICATIONS

External Dimension	1640 x 992 x 35mm
Weight	17.5kg/18.0kg
Solar Cells	156.75 x 156.75 mm (60pcs)
Front Glass	3.2 mm AR coating tempered glass, low iron
Frame	Anodized aluminium alloy
Junction Box	IP68, 3 diodes
Output Cables	4.0 mm; cable length:1000 mm
Connector	MC4 Compatible
Mechanical Load	5400 Pa

PARKING INFORMATION

External Dimension	1640 x 992 x 35mm	
Container	20' GP	40' GP
Pieces per Pallet	30	30
Pallets per Container	12	28
Pieces per Container	360	840

www.bqltd.com
sales@bqsolartech.com