

For a Free Quote:

Web: EnergyPal.com/solar

Call: 1-800-990-3725

Email: contact@energypal.com

EnergyPal

Solar Panel Guide Specification Data Sheet

BQ Solartech Co., Ltd.

BQ-POLY72

BQ335-72PM

Also available on the web at
EnergyPal.com/bq-solartech-co-ltd-solar-panels/bq335-72pm



www.bqltd.com
www.bqsolartech.com
sales@bqsolartech.com

BQ-POLY72



BQ-POLY72 325-340W

Product With Green Energy

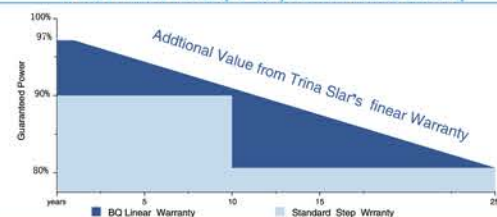


Certificates



BQ Linear Warranty • Standard Step Warranty.

10 Years Product Warranty • 25 years Linear Power Warranty



KEY FEATURES



POWER RANGE

0~+3% Plus Power Tolerance



PID RESISTANT

Potential induced degradation free



SALT MIST RESISTANT



AMMONIA RESISTANT



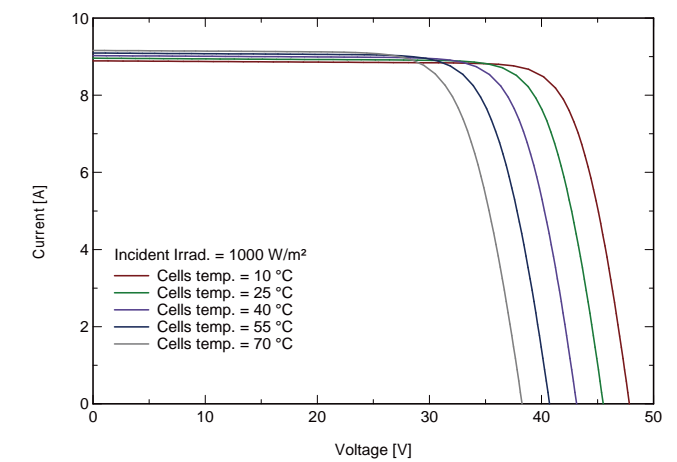
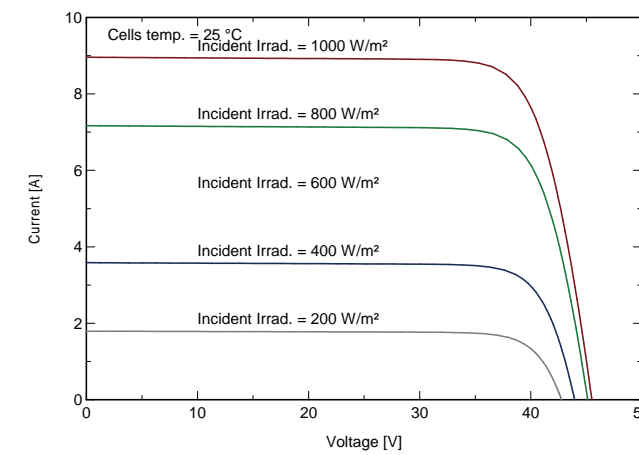
HIGH STRENGTHENED DESIGN

2400Pa Wind Pressure, 5400Pa Snow Crush Tolerable

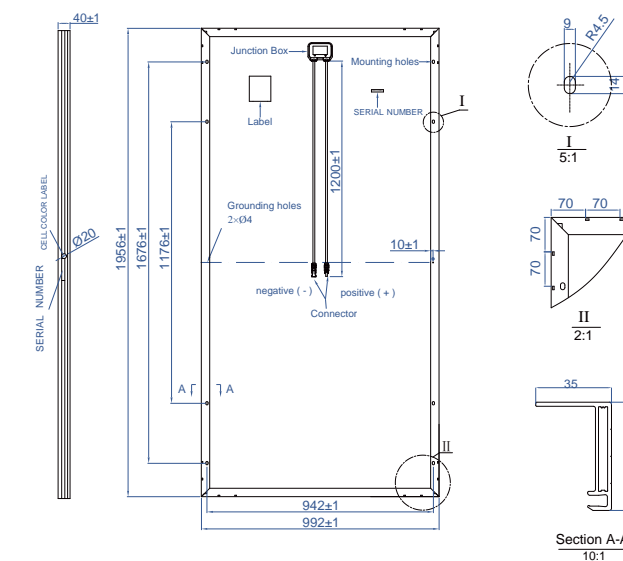
Electrical Characteristics

Item NO.		BQ325-72PM	BQ330-72PM	BQ335-72PM	BQ340-72PM
Nominal power	Pm (WP)	325	330	335	340
Open circuit voltage	Voc (V)	45.7	45.9	46.2	46.4
Short-circuit current	Isc (A)	9.03	9.12	9.20	9.30
Voltage at max power	Vmp (V)	37.3	37.5	37.7	37.9
Current at max power	Imp (A)	8.72	8.80	8.89	8.98
Module efficiency	(%)	16.75	17.01	17.26	17.52
System voltage	(V)	1500 V			
Temp. coefficient Voc	(%/°C)	-0.30%/°C			
Temp. coefficient Isc	(%/°C)	+0.05%/°C			
Temp. coefficient Pm	(%/°C)	-0.39%/°C			
Operating temp.	(°C)	-40 ~ +85°C			
NOCT	(°C)	45°C (±2°C)			

ELECTRICAL CHARACTERISTICS



PHYSICAL CHARACTERISTICS



MECHANICAL SPECIFICATIONS

External Dimension	1956 x 992 x 40mm
Weight	21.5kg/22.0kg
Solar Cells	156.75 x 156.75 mm (72pcs)
Front Glass	3.2 mm AR coating tempered glass, low iron
Frame	Anodized aluminium alloy
Junction Box	IP68, 3 diodes
Output Cables	4.0 mm², cable length: 1200 mm
Connector	MC4 Compatible
Mechanical Load	5400 Pa

PACKING CONFIGURATION

External Dimension	1956 x 992 x 40mm
Container	20' GP 40' GP
Pieces per Pallet	28 28
Pallets per Container	14 22
Pieces per Container	392 616

www.bqltd.com
sales@bqsolartech.com