

**For a Free Quote:**

**Web: [EnergyPal.com/solar](http://EnergyPal.com/solar)**

**Call: 1-800-990-3725**

**Email: [contact@energypal.com](mailto:contact@energypal.com)**

# **EnergyPal**

## **Solar Panel Guide Specification Data Sheet**

**BQ Solartech Co., Ltd.**

**BQ-MONO72**

**BQ380-72PM**

Also available on the web at  
[EnergyPal.com/bq-solartech-co-ltd-solar-panels/bq380-72pm](http://EnergyPal.com/bq-solartech-co-ltd-solar-panels/bq380-72pm)



[www.bqltd.com](http://www.bqltd.com)  
[www.bqsolartech.com](http://www.bqsolartech.com)  
[sales@bqsolartech.com](mailto:sales@bqsolartech.com)

# BQ-MON072



BQ-MONO72

375-390W

Product With Green Energy

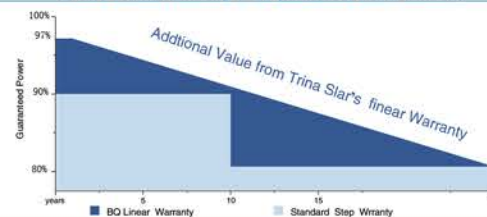


Certificates



BQ Linear Warranty • Standard Step Warranty

10 Years Product Warranty • 25 years Linear Power Warranty



KEY FEATURES



POWER RANGE

0~+3% Plus Power Tolerance



PID RESISTANT



SALT MIST RESISTANT



AMMONIA RESISTANT



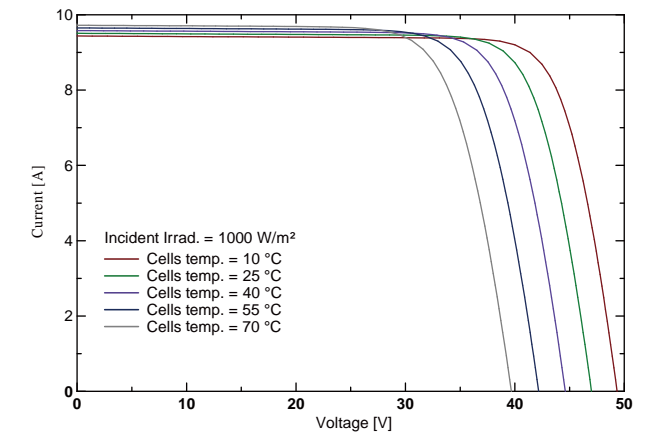
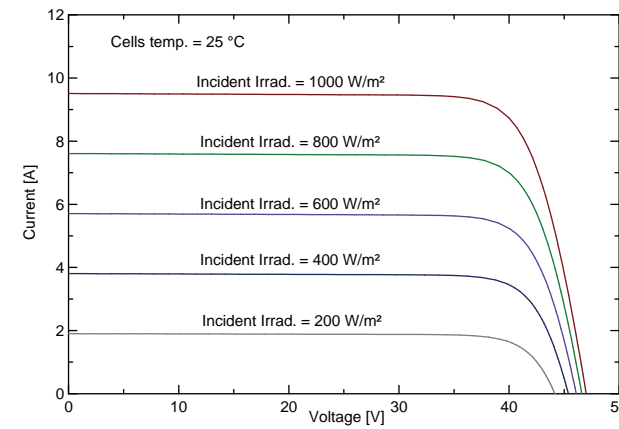
HIGH STRENGTHENED DESIGN

2400Pa Wind Pressure, 5400Pa Snow Crush Tolerable

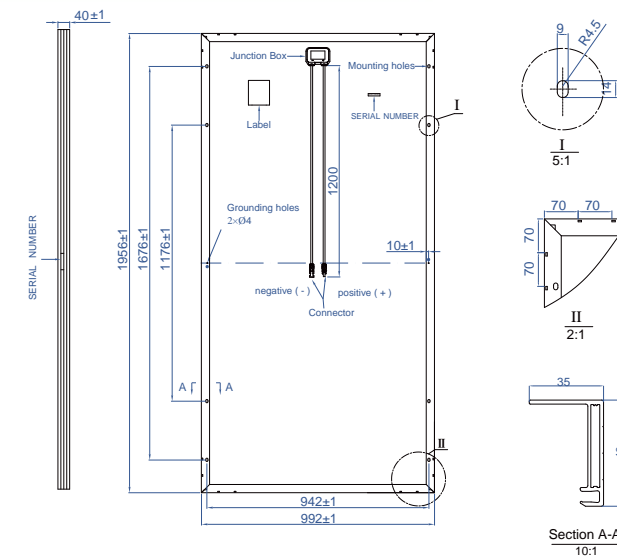
Electrical Characteristics

| Item NO.              |         | BQ375-72PM  | BQ380-72PM | BQ385-72PM | BQ390-72PM |
|-----------------------|---------|-------------|------------|------------|------------|
| Nominal power         | Pm (WP) | 375         | 380        | 385        | 390        |
| Open circuit voltage  | Voc (V) | 48.47       | 48.75      | 49.04      | 49.35      |
| Short-circuit current | Isc (A) | 10.06       | 10.12      | 10.17      | 10.22      |
| Voltage at max power  | Vmp (V) | 39.27       | 39.59      | 39.9       | 40.21      |
| Current at max power  | Imp (A) | 9.55        | 9.6        | 9.65       | 9.70       |
| Module efficiency     | (%)     | 19.0        | 19.3       | 19.5       | 19.8       |
| System voltage        | (V)     | 1500 V      |            |            |            |
| Temp. coefficient Voc | (%/°C)  | -0.30%/°C   |            |            |            |
| Temp. coefficient Isc | (%/°C)  | +0.05%/°C   |            |            |            |
| Temp. coefficient Pm  | (%/°C)  | -0.39%/°C   |            |            |            |
| Operating temp.       | (°C)    | -40 ~ +85°C |            |            |            |
| NOCT                  | (°C)    | 45°C (±2°C) |            |            |            |

ELECTRICAL CHARACTERISTICS



PHYSICAL CHARACTERISTICS



MECHANICAL SPECIFICATIONS

|                    |  |
|--------------------|--|
| External Dimension | 1956 x 992 x 40mm                          |
| Weight             | 21.5kg/22.0kg                              |
| Solar Cells        | 156.75 x 156.75 mm (72pcs)                 |
| Front Glass        | 3.2 mm AR coating tempered glass, low iron |
| Frame              | Anodized aluminium alloy                   |
| Junction Box       | IP68, 3 diodes                             |
| Output Cables      | 4.0 mm², cable length: 1200 mm             |
| Connector          | MC4 Compatible                             |
| Mechanical Load    | 5400 Pa                                    |

PACKING CONFIGURATION

|                       |                   |        |
|-----------------------|-------------------|--------|
| External Dimension    | 1956 x 992 x 40mm |        |
| Container             | 20' GP            | 40' GP |
| Pieces per Pallet     | 28                | 28     |
| Pallets per Container | 14                | 22     |
| Pieces per Container  | 392               | 616    |

