

**For a Free Quote:**

**Web: [EnergyPal.com/solar](http://EnergyPal.com/solar)**

**Call: 1-800-990-3725**

**Email: [contact@energypal.com](mailto:contact@energypal.com)**

# **EnergyPal**

## **Solar Panel Guide Specification Data Sheet**

**Suzhou Empire New Energy Co., Ltd.**

**EMP-60P1-4 255-275W**

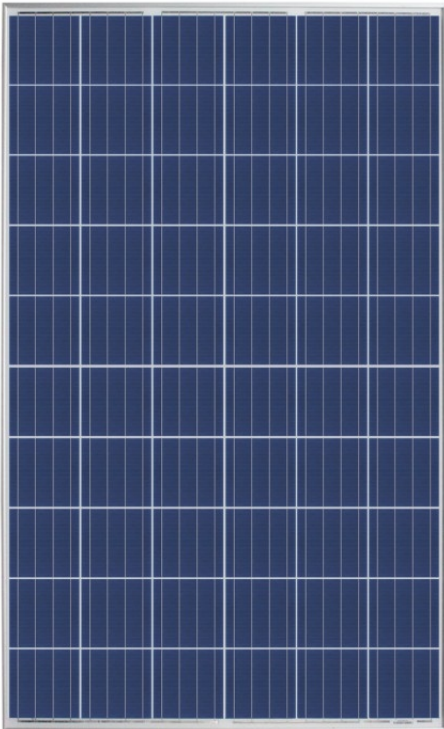
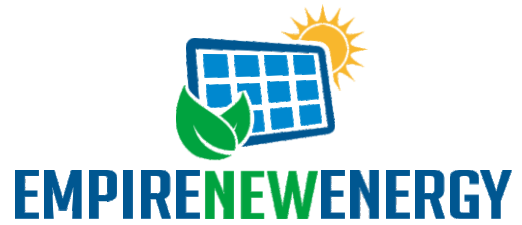
**EMP-60P1-4 260**

Also available on the web at

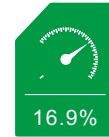
[EnergyPal.com/suzhou-empire-new-energy-co-ltd-solar-panels/emp-60p1-4-260](http://EnergyPal.com/suzhou-empire-new-energy-co-ltd-solar-panels/emp-60p1-4-260)

EMP-60P1-4- ( 255-275)W  
POWER OUTPUT RANGE

255-275



POWER TOLERANCE



MAXIMUM EFFICIENCY



Certied to withstand the most challenging environmental conditions

- 2400 Pa wind load
- 5400 Pa snow load
- 35 mm hail stones at 97 km/h



- PID resistant and free of snail trails
- Increased module robustness to minimize micro-cracks



Pass class A fire test



25 Year Linear Power Warranty

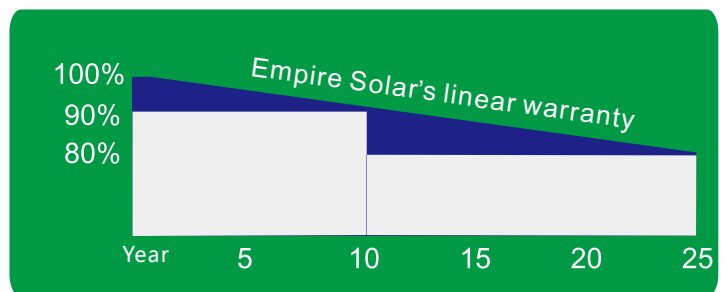
Comprehensive Products And System Certicates

IEC61215/IEC61730/UL1703/IEC61701/IEC62716  
ISO 9001: Quality Management System  
ISO 14001: Environmental Management System  
OHSAS 18001: Occupation Health and Safety Management System



LINEAR PERFORMANCE WARRANTY

10 Year Product Warranty · 25 Year Linear Power Warranty





## EMP-60P1-4- ( 255-275)W

### ELECTRICAL DATA (STC)

Peak Power Watts-PMAX (Wp)	255	260	265	270	275
Power Output Tolerance-PMAX (W)	0-+5				
Maximum Power Voltage-VMPP (V)	30.29V	30.63V	30.96V	31.26V	31.46V
Maximum Power Current-IMPP (A)	8.42A	8.49A	8.56A	8.64A	8.74A
Open Circuit Voltage-VOC (V)	37.82V	37.98V	38.14V	38.31V	38.50V
Short Circuit Current-ISC (A)	8.98A	9.04A	9.10A	9.15A	9.24A
Module Efficiency (%)	15.67%	15.98%	16.29%	16.60%	16.90%

STC: Irradiance 1000W/m<sup>2</sup>, Cell Temperature 25°C, Air Mass AM1.5.

### MECHANICAL DATA

Solar Cells	Multicrystalline 156.75 × 156.75 mm (6 inches)
Cell Orientation	60 cells (6 × 10)
Module Dimensions	1640 × 992 × 35mm
Weight	18.2kg
Glass	3.2 mm (0.13 inches), High Transmission, AR Coated Tempered Glass
Backsheet	White
Frame	Silver Anodized Aluminium Alloy
J-Box	IP 65 or IP 67 rated
Cables	Photovoltaic Technology Cable 4.0mm (0.006 inches)
Connector	Mc4

### TEMPERATURE RATINGS

NOCT ( Nominnal Operating Cell Temperature )	45°C ( ±2°C )
Temperature Coecient of Pmax	-0.410%/°C
Temperature Coecient of Voc	-0.330%/°C
Temperature Coecient of Isc	0.058%/°C

### MAXIMUM RATINGS

Operational Temperature	-40+85°C
Maximum System Voltage	1000VDC ( IEC )
Max Series Fuse Rating	15A

(DO NOT connect Fuse in Combiner Box with two or more strings in parallel connection)

### WARRANTY

10 year Product Workmanship Warranty  
25 year Linear Power Warranty

### PACKAGING CONFIGURATION

Modules per box: 30 pieces  
Modules per 40'container: 840 pieces

