

For a Free Quote:

Web: **EnergyPal.com/solar**

Call: **1-800-990-3725**

Email: **contact@energypal.com**

EnergyPal

Solar Panel Guide Specification Data Sheet

Suzhou Empire New Energy Co., Ltd.

EMP-72P1-4 305-330W

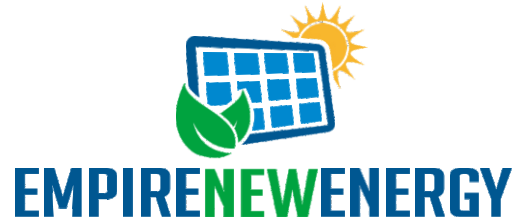
EMP-72P1-4 310

Also available on the web at

EnergyPal.com/suzhou-empire-new-energy-co-ltd-solar-panels/emp-72p1-4-310

EMP-72P1-4- (305-330) W POWER OUTPUT RANGE

305-330



POWER TOLERANCE

0-+5W



MAXIMUM EFFICIENCY

17.0%



5400Pa
2400Pa

Certied to withstand the most challenging environmental conditions

- 2400 Pa wind load
- 5400 Pa snow load
- 35 mm hail stones at 97 km/h



- PID resistant and free of snail trails
- Increased module robustness to minimize micro-cracks



Pass class A fire test



25 Year Linear Power Warranty

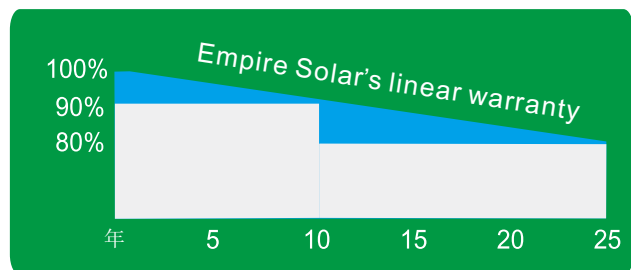
Comprehensive Products And System Certicates

IEC61215/IEC61730/UL1703/IEC61701/IEC62716
 ISO 9001: Quality Management System
 ISO 14001: Environmental Management System
 OHSAS 18001: Occupation Health and Safety Management System



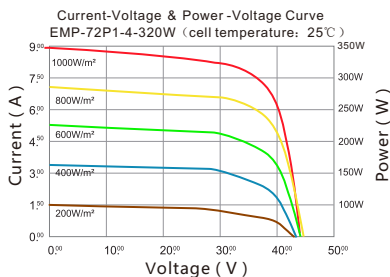
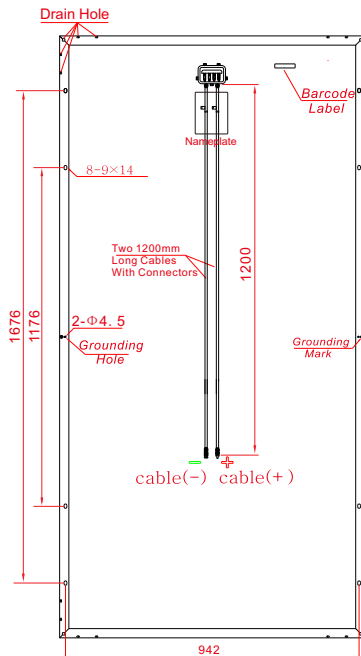
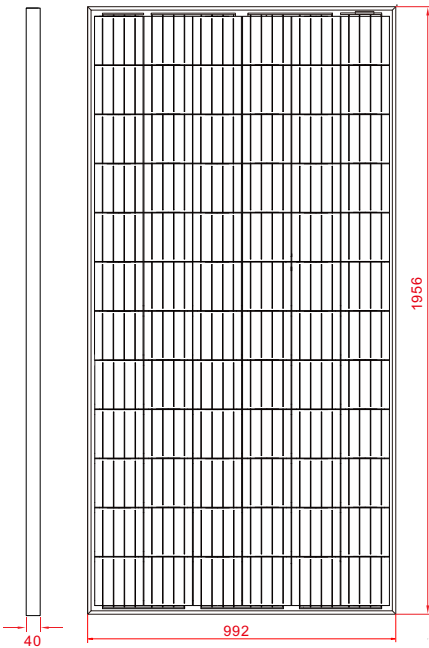
LINEAR PERFORMANCE WARRANTY

10 Year Product Warranty · 25 Year Linear Power Warranty





EMP-72P1-4- (305-330) W



ELECTRICAL DATA (STC)

Peak Power Watts-PMAX (Wp)	305W	310W	315W	320W	325W	330W
Power Output Tolerance-PMAX (W)	0-+5					
Maximum Power Voltage-VMPP (V)	36.71V	37.00V	37.28V	37.56V	37.66V	37.80V
Maximum Power Current-IMPP (A)	8.31A	8.38A	8.45A	8.52A	8.63A	8.73A
Open Circuit Voltage-VOC (V)	45.35V	45.45V	45.60V	45.82V	46.09V	46.21V
Short Circuit Current-ISC (A)	8.79A	8.85A	8.91A	9.03A	9.10A	9.21A
Module Efficiency (%)	15.72%	15.98%	16.23%	16.49%	16.75%	17.00%

STC: Irradiance 1000W/m², Cell Temperature 25°C, Air Mass AM1.5.

MECHANICAL DATA

Solar Cells	Multicrystalline 156.75 × 156.75 mm (6 inches)
Cell Orientation	72 cells (6 × 12)
Module Dimensions	1956 × 992 × 40mm
Weight	22.0kg
Glass	3.2 mm (0.13 inches), High Transmission, AR Coated Tempered Glass
Backsheet	White
Frame	Silver Anodized Aluminium Alloy
J-Box	IP 65 or IP 67 rated
Cables	Photovoltaic Technology Cable 4.0 ² mm (0.006 inches)
Connector	Mc4

TEMPERATURE RATINGS

NOCT (Nominal Operating Cell Temperature)	45°C (±2°C)
Temperature Coefficient of Pmax	-0.410%/°C
Temperature Coefficient of Voc	-0.330%/°C
Temperature Coefficient of Isc	0.058%/°C

MAXIMUM RATINGS

Operational Temperature	-40 + 85°C
Maximum System Voltage	1000VDC (IEC)
Max Series Fuse Rating	15A

(DO NOT connect Fuse in Combiner Box with two or more strings in parallel connection)

WARRANTY

10 year Product Workmanship Warranty
25 year Linear Power Warranty

PACKAGING CONFIGURATION

Modules per box: 27 pieces
Modules per 40' container: 594 pieces