

**For a Free Quote:**

**Web: [EnergyPal.com/solar](http://EnergyPal.com/solar)**

**Call: 1-800-990-3725**

**Email: [contact@energypal.com](mailto:contact@energypal.com)**

# **EnergyPal**

## **Solar Panel Guide Specification Data Sheet**

**Suzhou Empire New Energy Co., Ltd.**

**EMP-72P1-4 305-330W**

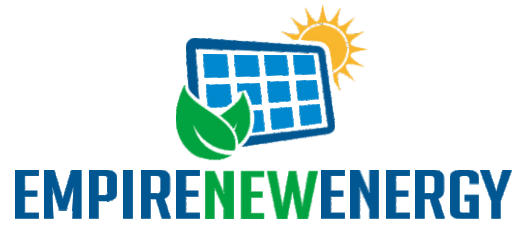
**EMP-72P1-4 320**

Also available on the web at

[EnergyPal.com/suzhou-empire-new-energy-co-ltd-solar-panels/emp-72p1-4-320](http://EnergyPal.com/suzhou-empire-new-energy-co-ltd-solar-panels/emp-72p1-4-320)

# EMP-72P1-4- ( 305-330 ) W POWER OUTPUT RANGE

**305-330**



0-+5W

POWER TOLERANCE

17.0%

MAXIMUM EFFICIENCY

5400Pa  
2400Pa

Certied to withstand the most challenging environmental conditions

- 2400 Pa wind load
- 5400 Pa snow load
- 35 mm hail stones at 97 km/h

- PID resistant and free of snail trails
- Increased module robustness to minimize micro-cracks

Pass class A fire test

25 Year Linear Power Warranty

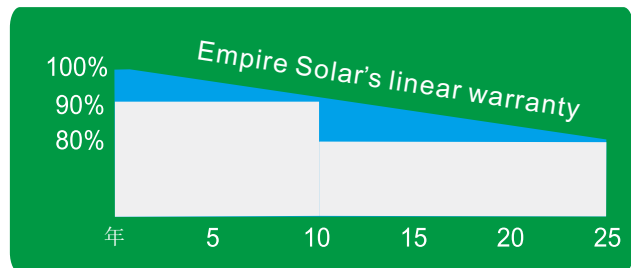
## Comprehensive Products And System Certicates

IEC61215/IEC61730/UL1703/IEC61701/IEC62716  
 ISO 9001: Quality Management System  
 ISO 14001: Environmental Management System  
 OHSAS 18001: Occupation Health and Safety Management System



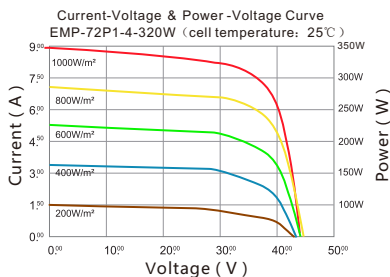
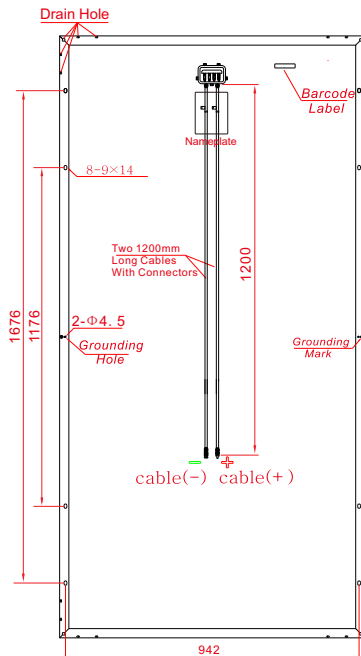
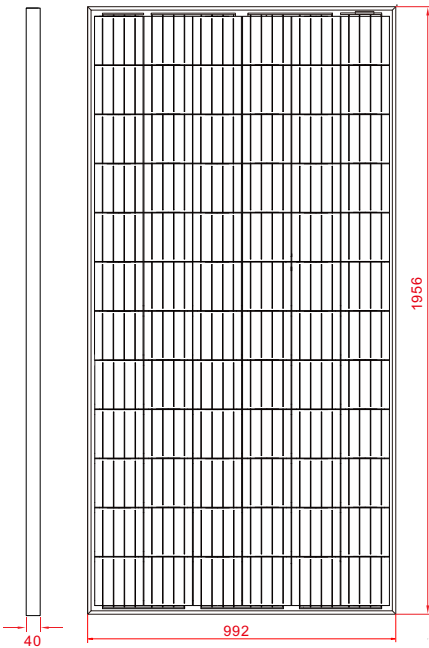
## LINEAR PERFORMANCE WARRANTY

10 Year Product Warranty · 25 Year Linear Power Warranty





## EMP-72P1-4- ( 305-330 ) W



### ELECTRICAL DATA (STC)

Peak Power Watts-PMAX (Wp)	305W	310W	315W	320W	325W	330W
Power Output Tolerance-PMAX (W)	0-+5					
Maximum Power Voltage-VMPP (V)	36.71V	37.00V	37.28V	37.56V	37.66V	37.80V
Maximum Power Current-IMPP (A)	8.31A	8.38A	8.45A	8.52A	8.63A	8.73A
Open Circuit Voltage-VOC (V)	45.35V	45.45V	45.60V	45.82V	46.09V	46.21V
Short Circuit Current-ISC (A)	8.79A	8.85A	8.91A	9.03A	9.10A	9.21A
Module Efficiency (%)	15.72%	15.98%	16.23%	16.49%	16.75%	17.00%

STC: Irradiance 1000W/m<sup>2</sup>, Cell Temperature 25°C, Air Mass AM1.5.

### MECHANICAL DATA

Solar Cells	Multicrystalline 156.75 × 156.75 mm (6 inches)
Cell Orientation	72 cells (6 × 12)
Module Dimensions	1956 × 992 × 40mm
Weight	22.0kg
Glass	3.2 mm (0.13 inches), High Transmission, AR Coated Tempered Glass
Backsheet	White
Frame	Silver Anodized Aluminium Alloy
J-Box	IP 65 or IP 67 rated
Cables	Photovoltaic Technology Cable 4.0 <sup>2</sup> mm (0.006 inches)
Connector	Mc4

### TEMPERATURE RATINGS

NOCT (Nominal Operating Cell Temperature)	45°C ( ±2°C )
Temperature Coefficient of P <sub>max</sub>	-0.410%/°C
Temperature Coefficient of Voc	-0.330%/°C
Temperature Coefficient of Isc	0.058%/°C

### MAXIMUM RATINGS

Operational Temperature	-40 + 85°C
Maximum System Voltage	1000VDC ( IEC )
Max Series Fuse Rating	15A

(DO NOT connect Fuse in Combiner Box with two or more strings in parallel connection)

### WARRANTY

10 year Product Workmanship Warranty  
25 year Linear Power Warranty

### PACKAGING CONFIGURATION

Modules per box: 27 pieces  
Modules per 40' container: 594 pieces