

For a Free Quote:

Web: EnergyPal.com/solar

Call: 1-800-990-3725

Email: contact@energypal.com

EnergyPal

Solar Panel Guide Specification Data Sheet

**ET Solar (Hong Kong)
340-355W Poly (Half-cut)
ET-P672BH355WW**

Also available on the web at
EnergyPal.com/et-solar-hong-kong-solar-panels/et-p672bh355ww

ELITE PLUS

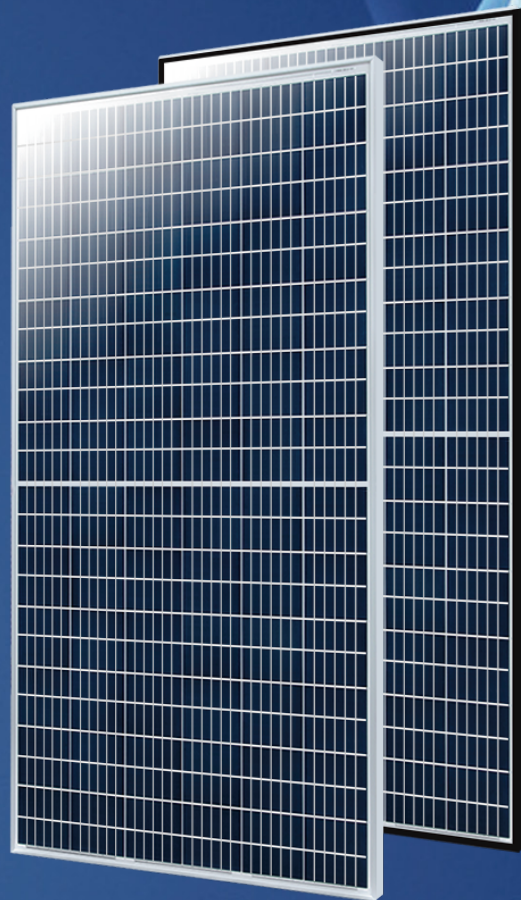
PV Module

ET-P672BH355WW/WB 355W

ET-P672BH350WW/WB 350W

ET-P672BH345WW/WB 345W

ET-P672BH340WW/WB 340W



High Voltage

UL and IEC 1500V certified; lowers BOS costs and yields better LCOE



High Efficiency

Higher module conversion efficiency (up to 20.38%) benefit from half cell structure (low resistance characteristic).



PID Resistance

Excellent Anti-PID performance guarantee limited power degradation for mass production.



Low-light Performance

Advanced glass and cell surface textured design ensure excellent performance in low-light environment.



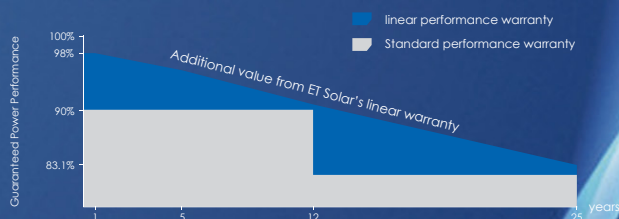
Severe Weather Resilience

Certified to withstand: wind load (2400 Pascal) and snow load (5400 Pascal).



Durability Against Extreme Environmental Conditions

High salt mist and ammonia resistance certified by TUV NORD.



ET SOLAR

Tel: +86 25 86898098

Fax: +86 25 86898097



M/ET-PD-EN-EU2019V3

ELECTRICAL SPECIFICATIONS

Model Type	ET-P672BH355WW	ET-P672BH350WW	ET-P672BH345WW	ET-P672BH340WW
	ET-P672BH355WB	ET-P672BH350WB	ET-P672BH345WB	ET-P672BH340WB
Peak Power (Pmax)	355W	350W	345W	340W
Module Efficiency	17.64%	17.4%	17.15%	16.9%
Maximum Power Voltage (Vmp)	39.6V	39.3V	39.0V	38.8V
Maximum Power Current (Imp)	8.97A	8.91A	8.85A	8.77A
Open Circuit Voltage (Voc)	47.1V	46.9V	46.7V	46.5V
Short Circuit Current (Isc)	9.47A	9.40A	9.32A	9.24A
Power Tolerance	0~+3%			
Operating Temperature	- 40 ~ + 85 C			
Maximum System Voltage	DC 1500V			
Nominal Operating Cell Temperature	45±2 C			

MECHANICAL SPECIFICATIONS

Cell Type	158.75mm x 158.75mm (half-cell)
Number of Cells	144 half-cells (6×24)
Weight	22.5 kg (49.6 lbs)
Dimension	2008×1002×40mm (79.06×39.45×1.58 inch)
Front Glass	3.2mm, Anti-Reflection Coating, High Transmission, Low Iron, Tempered Glass
Junction Box	IP67 rated
Frame	Anodized Aluminium Alloy
Output cables	TÜV 1x4.0mm ² , Cathode 450mm or Customi

TEMPERATURE COEFFICIENT

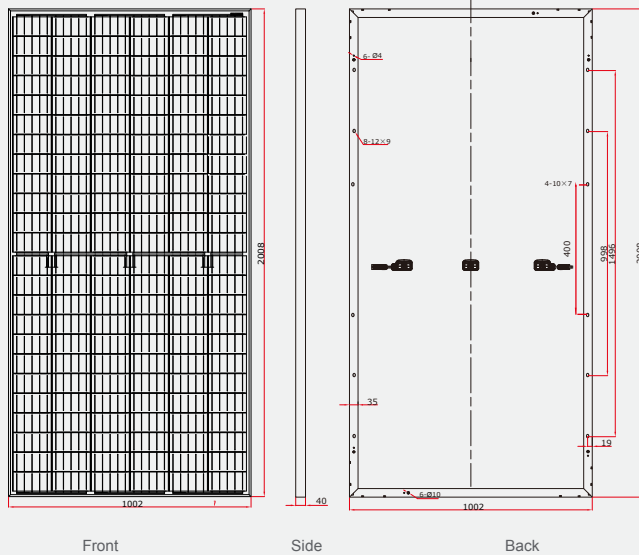
Temp. Coeff. of Isc (TK Isc)	0.05% /°C
Temp. Coeff. of Voc (TK Voc)	-0.30% /°C
Temp. Coeff. of Pmax (TK Pmax)	-0.38% /°C

PACKING MANNER

Container	40' HQ
Pieces per Pallet	27
Pieces per Container	649

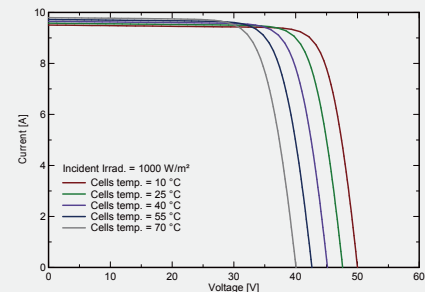
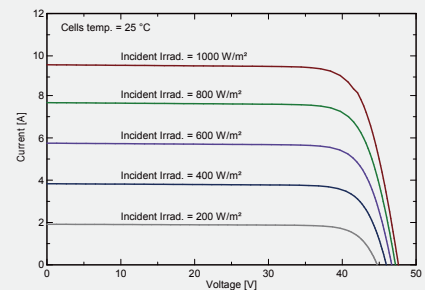
PHYSICAL CHARACTERISTICS

Unit:mm (inch)



ELECTRICAL CHARACTERISTICS

I-V Curve (ET-P672BH340WW)



Note: the specifications are obtained under the Standard Test Conditions (STCs): 1000 W/m² solar irradiance, 1.5 Air Mass, and cell temperature of 25°C. The NOCT is obtained under the Test Conditions: 800 W/m², 20°C ambient temperature, 1m/s wind speed, AM 1.5 spectrum.

Please contact support@etsolar.com for technical support. The actual transactions will be subject to the contracts. This parameters is for reference only and it is not a part of the contracts. The specifications are subject to change without prior notice.