

For a Free Quote:

Web: EnergyPal.com/solar

Call: 1-800-990-3725

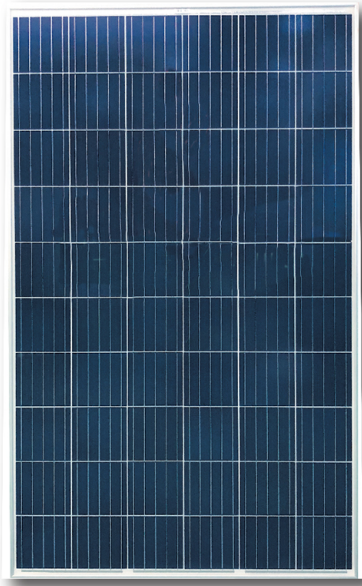
Email: contact@energypal.com

EnergyPal

Solar Panel Guide Specification Data Sheet

**Zhenjiang Fengyuan New Energy Science &
Technology Co., Ltd
FY270-285-20/Wd Poly
FY270-20/Wd**

Also available on the web at
EnergyPal.com/zhenjiang-fengyuan-new-energy-science-technology-co-ltd-solar-panels/fy270-20-wd



多晶硅太阳能电池组件

270~285瓦

POLYCRYSTALLINE SOLAR MODULE 270~280Watt

全球领先的质量

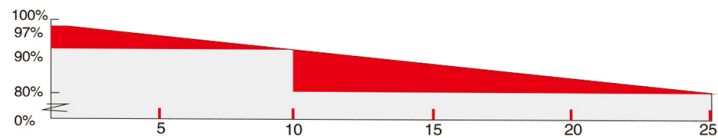
Global leading quality

以持续为社会、客户、企业、员工创造价值为核心理念，力争成为行业顶尖的光伏产品领导品牌。

Based on the core idea of creating value for society, customers and enterprises, we strive for becoming the leading supplier of photovoltaic products.

产品 || 质保

PRODUCT | WARRANTY&INSURANCE



第一年输出功率不低于标称功率的97%

Not less than 97% of nominal power in the first year.

第二年到第二十五年每年功率衰减不超过标称功率的0.7%

Annual power attenuation does not exceed 0.7% of nominal power from the 2nd year to the 25th year.

产品的材料和品质保证10年。

10- year material and workmanship warranty

产品 || 主要特征

PRODUCT KEY FEATURES



组件效率达到17.5%
Excellent Module Efficiency
Up To 17.5%



组件正公差+5%，
保证更高的功率输出
Positive Tolerance Of Up To
5% Delivers Higher Outputs
Reliability



完美的弱光效应，保证弱
光条件下更好的组件性能
Excellent weak light
performance
Excellent performance
under low light conditions



串联电流工艺，保证最大的系统
输出，减少功率损耗2%
Current sorting process
System output maximized by reducing
mismatch losses up to 2% with modules
sorted & packaged by amperage



防水等级IP67，保证组件长期稳定性
IP67 junction box available
long-term weather endurance



最大雪载负荷达到5400pa
Heavy snow load
up to 5400pa

产品 || 管理体系 || 认证

PRODUCT&MANAGEMENT SYSTEM CERTIFICATES

产品质量管理体系认证ISO9001:2008

环境管理体系认证ISO14001:2004

IEC61215/IEC61730

TUV/JET/CEC

职业健康安全管理体系认证 BS OHSAS 18001:3007

CERTIFICATIONS&STANDARD

IEC 61215/IEC61730 : CEC/CE/TUV/JET

ISO9001 : 2008 | QUALITY MANAGEMENT SYSTEM

ISO14001 : 2004 | STANDARD FOR ENVIRONMENTAL
MANAGEMENT SYSTEM

BS OHSAS 18001 : 2007



关于丰源

About Solar Fab

镇江丰源新能源科技有限公司成立于2006年6月26日，公司现有员工600余人，主要从事于太阳能光伏组件的制造、销售及相关技术的研发。2019年产能达到1GW，公司位于江苏省镇江扬中市油坊镇明珠南路1号；占地260亩。

Zhenjiang Fengyuan New Energy Science & Technology Co.,Ltd. was founded in 2006, with over 600 employees, covering an area of 260 acres, the company mainly specializes in solar photo voltaic module manufacturing, sales and R&D. Our factory is located in No.1 South Mingzhu Road, Youfang Town, Yangzhong, Jiangsu, China. And our capacity reached 1GW in 2019.

标准测试条件下的电性能参数
ELECTRICAL DATA | STC

标准测试条件下的电性能参数 Electrical Data	FY270-20/Wd	FY275-20/Wd	FY280-20/Wd	FY285-20/Wd
峰值功率 Maximum Power at STC(Pmax)	270W	275W	280W	285W
峰值功率电压 Optimum Operating Voltage(Vmp)	31.1V	31.1V	31.3V	31.5V
峰值功率电流 Optimum Operating Current(Imp)	8.69A	8.85A	8.95A	9.05A
开路电压 Open Circuit Voltage(Voc)	38.3V	38.5V	38.6V	38.9V
短路电流 Short Circuit Current(Isc)	9.18A	9.25A	9.38A	9.38A
组件效率 Module Efficiency	16.5%	16.8%	17.1%	17.5%
组件工作温度 Operating Module Temperature	-40℃ to +85℃			
最大系统电压 Maximum System Voltage	1000 V DC(IEC)			
最大保险丝额定值 Maximum Series Fuse Raing	20A			
组件功率公差 Power Tolerance	0/+5%			

STC: 辐照度1000W/m², 组件温度25℃, 大气质量AM1.5, 根据(IEC 60904-9), 功率测试误差范围±3%
STC: Irradiance 1000 W/m², module temperature 25℃, AM=1.5;
Best in Class AAA solar simulator (IEC 60904-9) used, power measurement uncertainty is within +/-3%

Noct	FY270-20/Wd	FY275-20/Wd	FY280-20/Wd	FY285-20/Wd
峰值功率 Maximum Power at STC(Pmax)	198W	202W	206W	212W
峰值功率电压 Optimum Operating Voltage(Vmp)	28.6V	29.0V	29.4V	29.7V
峰值功率电流 Optimum Operating Current(Imp)	6.96A	7.02A	7.08A	7.15A
开路电压 Open Circuit Voltage(Voc)	35.3V	35.5V	35.7V	35.9V
短路电流 Short Circuit Current(Isc)	7.36A	7.42A	7.48A	7.55A

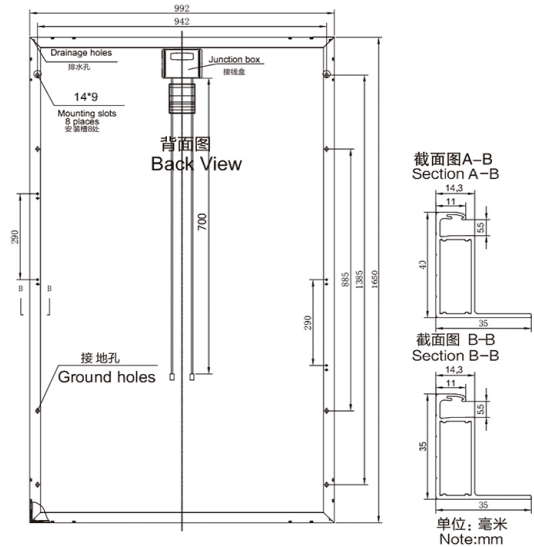
NOCT: Irradiance 800 W/m², ambient temperature 20℃, AM=1.5, wind speed 1 m/s;
Best in Class AAA solar simulator (IEC 60904-9) used, power measurement uncertainty is within +/- 3%

温度特征 Temperature Characteristics	
NOCT标准下的电池片温度 Nominal Operating Cell Temperature (NOCT)	45 ± 2℃
峰值功率的温度系数 Temperature Coefficient of Pmax	-0.43%/℃
开路电压的温度系数 Temperature Coefficient of Voc	-0.33%/℃
短路电流的温度系数 Temperature Coefficient of Isc	0.067%/℃

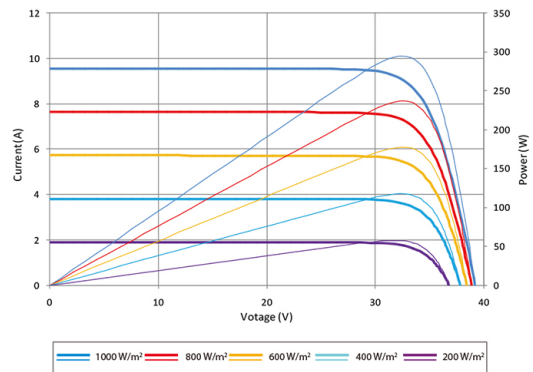
结构材料 Mechanical Characteristics	
太阳能电池片 Solar Cell	多晶156.75 x 156.75mm Polycrystalline silicon 156.75 x 156.75mm
电池片数量 No. of Cells	60 (6 x 10)
组件尺寸 Dimensions	1650 x 992 x 35mm
组件重量 Weight	18.2kg
玻璃 Front Glass	低铁钢化玻璃3.2mm 3.2mm tempered glass
边框 Frame	阳极氧化铝合金 Anodized aluminium alloy
接线盒 (防护等级) Junction Box	IP67 rated (3 bypass diodes)
线缆 (标准/横截面积/长度) Output Cables	TUV(2 PFG 1169/08.07) 4.0mm ² , symmetrical lengths(-) 700mm and (+)700mm
接插件 Connectors	通灵/JINGKE TL connectors

包装信息 Packing Configuration		
每托盘的数量 (片) Pieces per pallet	20' GP	40' HC
每集装箱的托盘数量 (片) Pallets per container	30/27	30/27
每货柜的数量 (片) Pieces per container	12/12	28/28
	360/324	840/756

组件结构图
MODULE | ENGINEERING DRAWING



电流-电压 & 功率-电压曲线图(285-20)
Current-Voltage & Power-Voltage Curve (285-20)



信息栏
Information bar



产品规格改变时不另行通知