

**For a Free Quote:**

Web: [EnergyPal.com](https://energypal.com)

Call: **1-800-990-3725**

Email: **contact@energypal.com**



**Solar Panel Guide**

**Specification Data Sheet**

Learn more at [energypal.com/best-solar-panels-for-homes](https://energypal.com/best-solar-panels-for-homes)

# Sunny Apex

## 150W Solar Module

## High Power Series

### Key Features

Reduce hot spot effect and enhance modules performance

High module conversion efficiency above 18%

Innovative production process to ensure reliability and durability

Product is certified to IEC 61215 and 61730 by TUV

### Electrical Specifications

Model Type	GW-ES150A
Peak Power (Pmax)	150W
Module Efficiency	18.50%
Maximum Power Voltage (Vmp)	18.2V
Maximum Power Current (Imp)	8.25A
Open Circuit Voltage (Voc)	22.5V
Short Circuit Current (Isc)	8.56A
Power Tolerance	- 1W ~ + 4.99W
Maximum System Voltage	1000V
Normal Operating Cell Temp.	45 °C (+/- 2)

### Mechanical Specifications

Cell type	Mono-crystalline
Dimensions	1031 x 785 x 35mm [40.59 x 30.91 x 1.38in]
Weight	9kg [19.84lbs]
Frame	anodized aluminum
Junction Box	IP 67 waterproof
Cables	4.00mm <sup>2</sup> , 1000mm
Connectors	MC4 compatible

### Temperature Coefficients

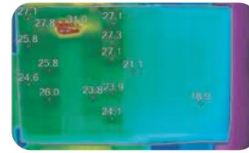
Power	-0.365%/ °C
Voltage (Voc)	-0.28%/ °C
Current (Isc)	+0.05%/ °C

Brand	GWSOLAR
-------	---------

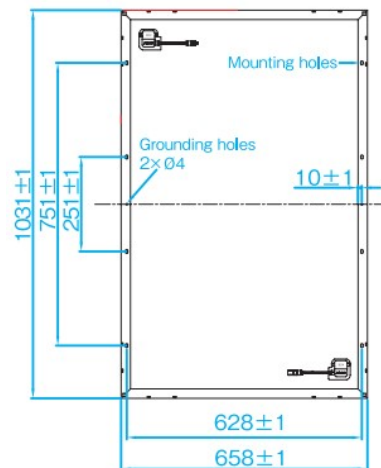
### Warranties & Certifications

Warranties	2 years product warranty, 25 years limited power warranty of 80% of the minimum specified power rating
Certificates	IEC 61215, 61730

### 5 Hours Shading Test



Maximum Value 47.3°C  
Average Value 23.9°C  
Minimum Value 15.6°C



Unit: mm



Note: All electrical parameters are rated at standard test conditions (irradiance of 1000W/m<sup>2</sup>, AM 1.5G, cell temp. 77°F/25°C)  
Caution: Read Safety and Installation Instruction before using this product.

2018 Sunny Apex Development Ltd. All right reserved. Specifications included in this datasheet are subject to change without notice.

GWSOLAR CORP. | Hong Kong Agent

**Sunny Apex** Development Limited

[www.sunnyapex.com](http://www.sunnyapex.com)

25/F Grandion Plaza, 932 Cheung Sha Wan Road, Kowloon, Hong Kong | T: +852-6983 7178 F: +852-3186 2200 | [info@sunnyapex.com](mailto:info@sunnyapex.com)