

**For a Free Quote:**

**Web: [EnergyPal.com/solar](http://EnergyPal.com/solar)**

**Call: 1-800-990-3725**

**Email: [contact@energypal.com](mailto:contact@energypal.com)**

# **EnergyPal**

## **Solar Panel Guide Specification Data Sheet**

**Changzhou Hershey-Power New Energy Co., Ltd.**

**HS144-P-335-400W**

**HS144-P-400**

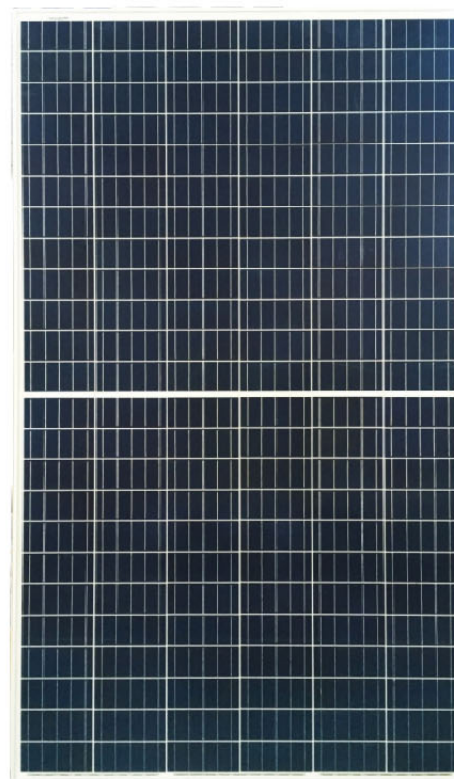
Also available on the web at

[EnergyPal.com/changzhou-hershey-power-new-energy-co-ltd-solar-panels/hs144-p-](http://EnergyPal.com/changzhou-hershey-power-new-energy-co-ltd-solar-panels/hs144-p-400)

400

# HS144-P-[335-400W]

POLY-CRYSTALLINE HALF CUT MODULE

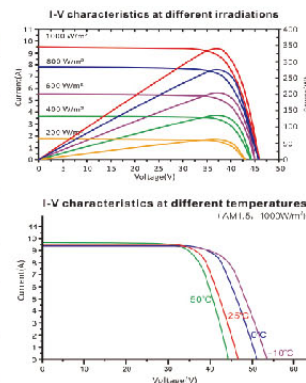


- Industry leading lowest thermal co-efficient of power
- Industry leading 12 years product warranty
- Excellent low irradiance performance
- Excellent PID resistance
- Positive tight power tolerance
- Dual stage 100% EL Inspection warranting defect-free product
- Module Imp binning radically reduces string mismatch losses
- Warranted reliability and stringent quality assurances well beyond certified requirements
- Certified to withstand severe environmental conditions
  - Anti-reflective & anti-soiling surface minimise power loss from dirt and dust
  - Severe salt mist, ammonia & blown sand resistance, for seaside, farm and desert environments
  - Excellent mechanical load 2400Pa & snow load 5400Pa resistance

## ELECTRICAL DATA (STC)

Model Number	HS144-P-335	HS144-P-340	HS144-P-345	HS144-P-350	HS144-P-355	HS144-P-385	HS144-P-390	HS144-P-395	HS144-P-400
Rated Power in Watts-Pmax(Wp)	335	340	345	350	355	385	390	395	400
Open Circuit Voltage-Voc(V)	46.10	46.30	46.50	46.70	46.90	48.15	48.30	48.45	48.60
Short Circuit Current-Isc(A)	9.30	9.40	9.50	9.60	9.70	10.20	10.30	10.40	10.50
Maximum Power Voltage-Vmpp(V)	38.60	38.70	38.80	38.95	39.10	40.15	40.25	40.35	40.45
Maximum Power Current-Impp(A)	8.70	8.80	8.90	9.00	9.10	9.60	9.70	9.80	9.90
Module Efficiency (%)	16.80%	17.10%	17.30%	17.60%	17.80%	19.21%	19.45%	19.70%	19.95%

@STC (1000W/m<sup>2</sup>, AM1.5, Cell Temp. 25°C) Voc tolerance ±3% Isc tolerance ±4%



## MECHANICAL DATA

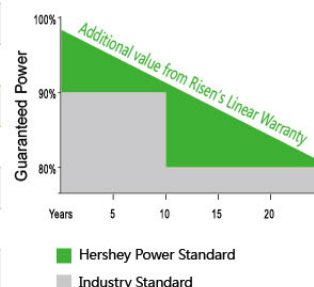
Solar cells	Polycrystalline, 5BB
Cell configuration	144 cells (6x12+6x12)
Weight	23kg
Superstrate	3.2 mm, High Transmission, Low Iron, Tempered ARC Glass
Substrate	White Back-sheet
Frame	Anodized Aluminium Alloy ,Silver Color
J-Box	Potted, IP68,1500VDC, 3 Schottky bypass diodes
Cables	4.0mma (12AWG), Positive(+)270mm, Negative(-)100mm
Connector	IP67/IP68

## TEMPERATURE & MAXIMUM RATINGS

Nominal Module Operating Temperature (NMOT)	45°C±2°C
Temperature Coefficient of Voc	-0.32%/°C
Temperature Coefficient of Isc	0.055%/°C
Temperature Coefficient of Pmax	-0.39%/°C
Operational Temperature	-40°C~+85°C
Maximum System Voltage	1500VDC
Max Series Fuse Rating	20A
Limiting Reverse Current	20A

## LINEAR PERFORMANCE WARRANTY

12year Product Warranty/25year Linear Power Warranty



## CHANGZHOU HERSHEY-POWER NEW ENERGY CO.,LTD

Head office: Room 2407,Unit B,Tianning Times Square,Changzhou,China

Plant address:NO.101,East Guangdian Rd,Hutang Industrial Park,Changzhou,China

Web site:www.hershey-power.com Email:sales@hershey-power.com