

For a Free Quote:

Web: EnergyPal.com/solar

Call: 1-800-990-3725

Email: contact@energypal.com

EnergyPal

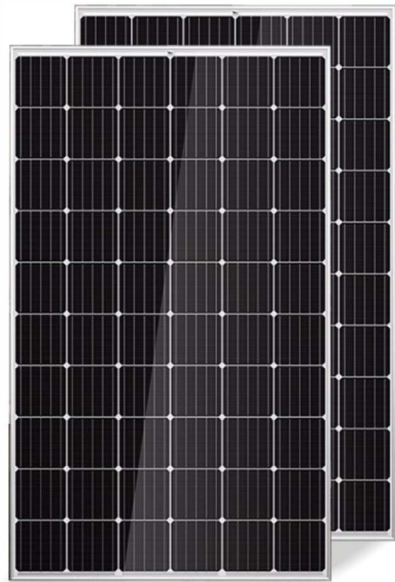
Solar Panel Guide Specification Data Sheet

Luo Yang Winners Solar Technology Co., Ltd
HSM(285-315)M156(PERC)
HSM315M156

Also available on the web at

EnergyPal.com/luo-yang-winners-solar-technology-co-ltd-solar-panels/hsm315m156

Module Specification



THE Mustang MODULE
HSM285-315M156 (PERC)
 Mono 285~315W



ISO 9001:2015, ISO 14001:2015, OHSAS 18001:2007 Factory certification

Module Characteristics

- 5%** Positive allowance assurance: guaranteed power output (0~5%)
- ✓** Strict quality control: All modules undergo Electroluminescent test, 1500V insulation test and electrical performance test
- ⌒** High quality raw material: Sleek appearance Available with black frame
- ☀** Reliable performance: Anti-reflective glass coating and advanced cell surface texturing ensures better capture of direct and indirect light Lower temperature coefficient in hot environment produces higher output

4% lower transportation cost	3% lower Land cost
Reduced by 2.5% Installation cost	Reduced by 1.5% BOS cost

Higher conversion efficiency reduces system cost per watt



Note: Read safety and installation instructions before using the product. If the specifications of this data sheet are changed, the actual product shall prevail.

Module Parameter

Electrical Data @ NOCT	HSM285M156	HSM295M156 (PERC)	HSM305M156 (PERC)	HSM315M156 (PERC)
Maximum Power $P_{MAX}(WP)$	285	295	305	315
Power Tolerance $P_{MAX}(\%)$	0~5	0~5	0~5	0~5
Maximum Power Voltage $V_{MP}(V)$	32.00	32.50	32.90	33.2
Maximum Power Current $I_{MPP}(A)$	8.92	9.08	9.28	9.50
Open Circuit Voltage $V_{OC}(V)$	39.30	39.60	40.00	40.8
Short Circuit Current $I_{SC}(A)$	9.44	9.68	9.85	9.96
Module efficiency $\eta_m(\%)$	17.5	18.0	18.6	18.9

NOCT: (Air-mass AM1.5, Irradiance at 1000W/m², battery temperature: 25°C)

Mechanical Data	
Solar Cells	Mono-crystalline 156.75*156.75mm(6 inch)
Cell Orientation	60 cells (6*10)
Module dimensions	1640*992*35mm (64.57*39.06*1.38 inch)
Weight	18.5 Kg (40.79 lb)
Glass	Super white anti-reflection tempered glass.
Frame	Anodized aluminium alloy
J-Box	IP 68, MC compatible
Cables	Two strips of 4.0mm ² (0.0062 in ²) wire and 1000mm long
Connector	Original MC4 Plus

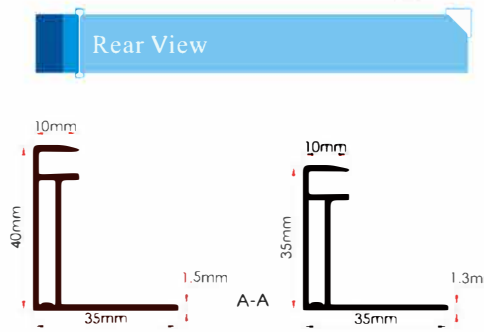
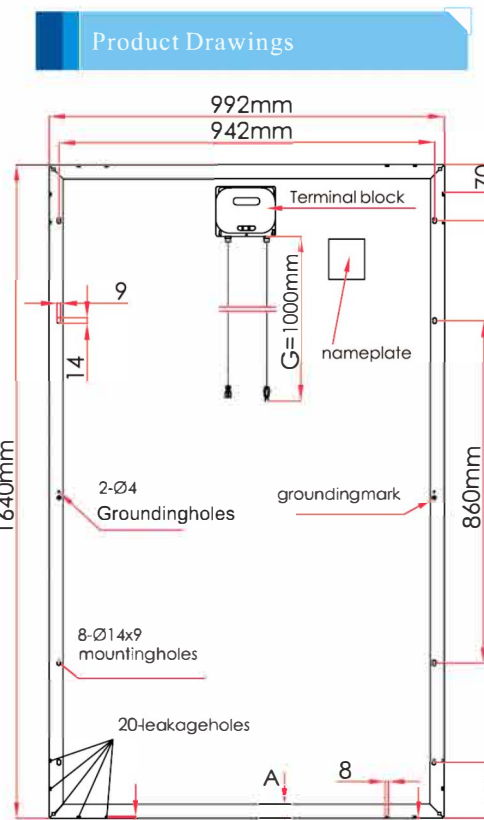
Shipping Method	20GP	40GP	40HQ
Qty/Box	60	60	64
Number of Boxes	6	14	14
Total	360	840	896

Note: When the module life cycle completes, it should be recycled by professional institutions.

Temperature Ratings		Quality Parameters	
Operating temperature	-40°C~+85°C	11 year product workmanship warranty	
Maximum system voltage	1500V DC (IEC) / 1000V DC (UL)	25 year linear power warranty (Refer to the Product Warranty for details)	
Max Series Fuse Ratings	15A		

Mechanical Properties	
Frontal mechanical load (anti-snow, wind)	5400pa
Back mechanical load (wind resistance)	2400pa

Note: The detailed parameters are subject to the final mass production data.



WINNER SOLAR



NO.123 NORTH HENGSHAN ROAD Luoyang, China
 Sales Line: 0086 379 65188718
 Http://www.winner-solar.net
 E-mail:sales@winner-solar.com