

For a Free Quote:

Web: EnergyPal.com/solar

Call: 1-800-990-3725

Email: contact@energypal.com

EnergyPal

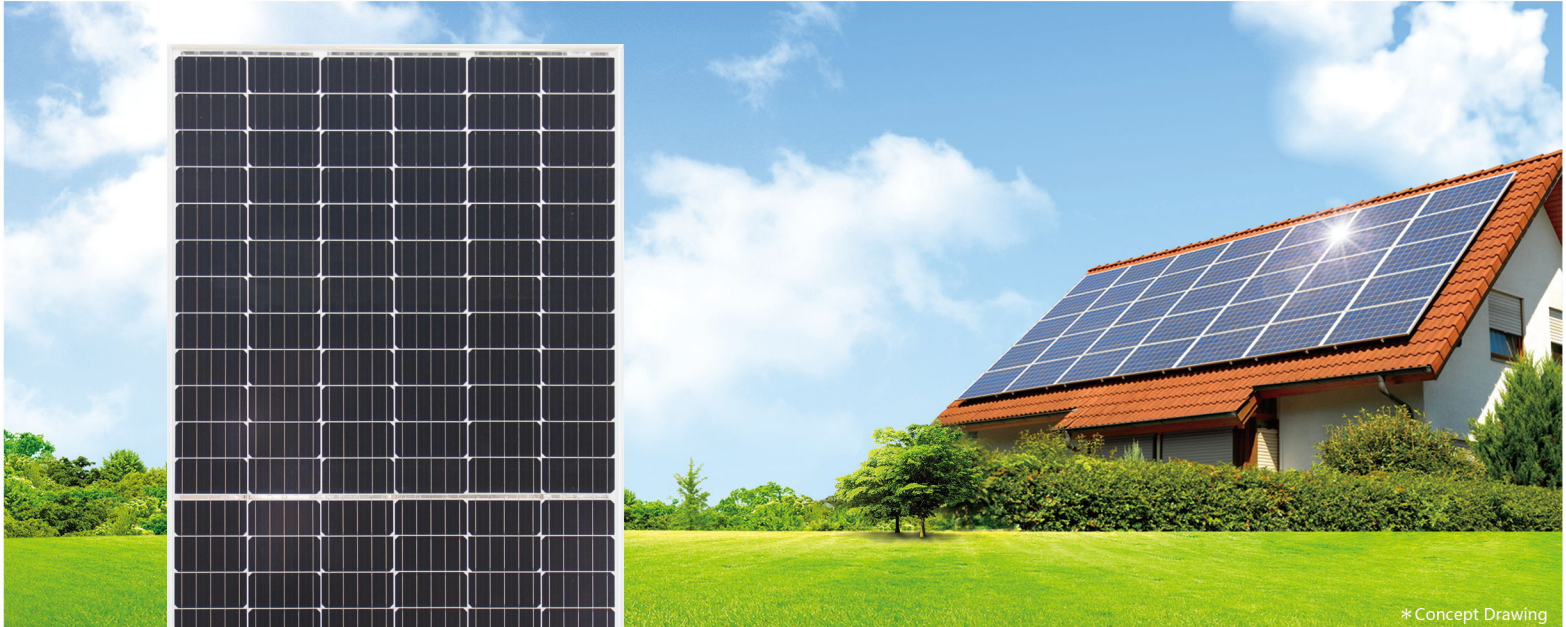
Solar Panel Guide Specification Data Sheet

Tangshan Haitai New Energy Technology Co., Ltd.

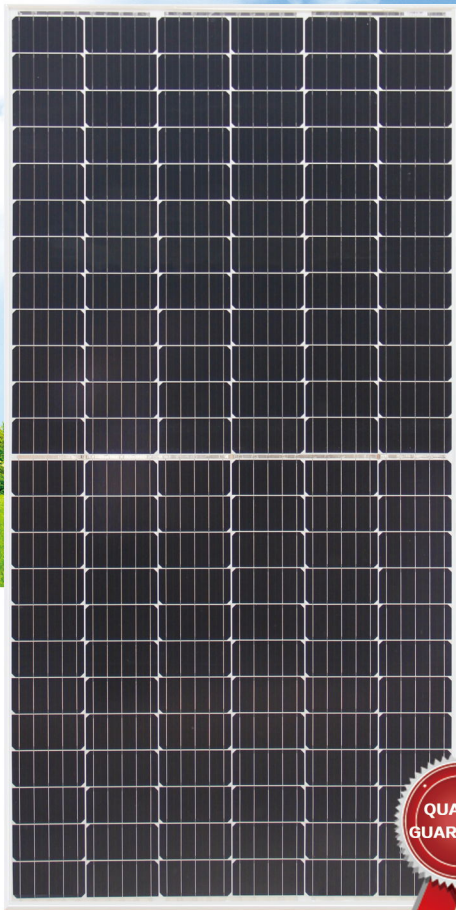
HTM360-390MH-72

HTM370MH-72

Also available on the web at
EnergyPal.com/tangshan-haitai-new-energy-technology-co-ltd-solar-panels/htm370mh-72



* Concept Drawing



Half-cell Monocrystal Solar Cell Modules

HTM360/365/370/375/380/ 385/390MH-72

Reliable Quality

- 0~+3% positive tolerance output warranty
- EL full inspection for twice effectively eliminates defects of products
- Optimize module current profile, improve system-side power generation

Comprehensive Product and System Certification

- ISO 9001:2015 Quality Management Systems
- ISO 14001:2015 Environmental Management Systems
- OHSAS 18001:2007 Occupational Health and Safety Management Systems



Module Characteristics



5 Busbar Half-Cells

Innovative half-cutting cell technology, lower internal current, lower internal resistance loss



High Output Power

Output power is higher than the same type of conventional monocrystal module



Anti-PID Characteristics

Ensure large-scale production of half-cell monocrystal module pass PID test



Hot-Spot Effect

Low hot spot temperature, higher safety performance



Load Capacity

Certified to withstand: wind load (2400 Pascal) and snow load (5400 Pascal)

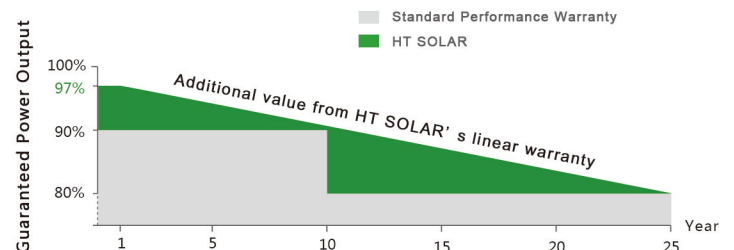


Harsh Environment Adaptation

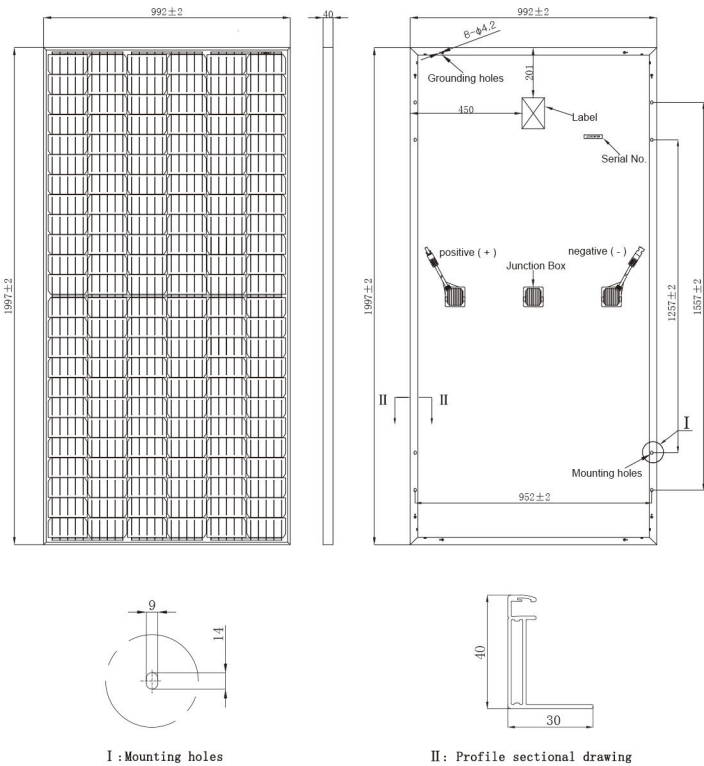
High salt mist and ammonia resistance certified by TUV NORD

Industry-leading Linear Power Warranty

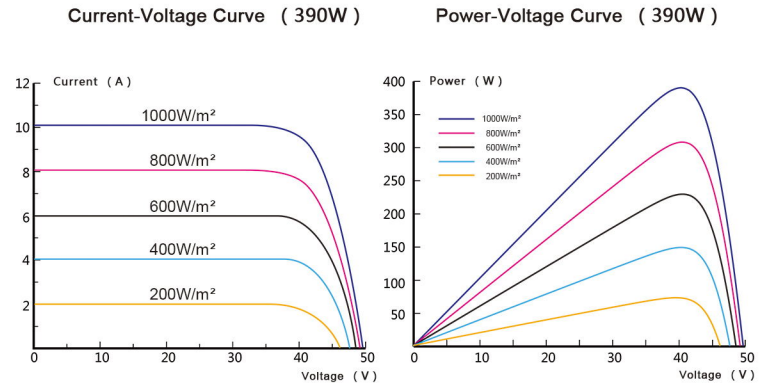
10-year product warranty•25-year linear power warranty



Module Dimensions(mm)



I-V Curve



Structure Parameter

Cell Type	156.75x78.375mm Monocrystal
Cell Orientation	144 (6x24)
Module Dimensions	1997x992x40mm
Weight	22kg
Front Cover	3.2mm high transmittance, reinforced glass
Back Sheet	Anti-aging film
Frame Material	Anodized aluminum alloy
Junction Box	Protection class IP67
Cable	4.0mm² photovoltaic special cable
Connector	MC4 compatible connector

Packaging Capacity

Each box capacity: 26 pcs
 Container load capacity per 40 feet: 572 pcs

Electric Characteristics

Module Type	HTM360MH-72		HTM365MH-72		HTM370MH-72		HTM375MH-72		HTM380MH-72		HTM385MH-72		HTM390MH-72	
	STC	NOCT	STC	NOCT	STC	NOCT	STC	NOCT	STC	NOCT	STC	NOCT	STC	NOCT
Test Conditions	STC	NOCT	STC	NOCT	STC	NOCT	STC	NOCT	STC	NOCT	STC	NOCT	STC	NOCT
Maximum Output Power(Pm)	360W	266W	365W	270W	370W	274W	375W	278W	380W	282W	385W	286W	390W	290W
Maximum Power Voltage(Vmp)	39.39V	36.20V	39.64V	36.44V	39.88V	36.69V	40.11V	36.92V	40.34V	37.16V	40.57V	37.39V	40.80V	37.62V
Maximum Power Current(Imp)	9.14A	7.35A	9.21A	7.41A	9.28A	7.47A	9.35A	7.53A	9.42A	7.59A	9.49A	7.65A	9.56A	7.71A
Open-circuit Voltage(Voc)	47.75V	44.38V	47.95V	44.76V	48.35V	45.13V	48.75V	45.19V	49.06V	45.45V	49.35V	45.69V	49.65V	45.94V
Short-circuit Current(Isc)	9.65A	7.82A	9.72A	7.89A	9.79A	7.96A	9.86A	8.03A	9.93A	8.10A	10.00A	8.17A	10.07A	8.24A
Module Conversion Efficiency(STC)	18.17%		18.42%		18.68%		18.93%		19.18%		19.43%		19.69%	
Maximum System Voltage	1000V/1500V													
Operating Temperature	-40°C~+85°C													
Temperature Coefficient(Pm)	-0.393%/°C													
Temperature Coefficient(Voc)	-0.31%/°C													
Temperature Coefficient(Isc)	0.041%/°C													
Cell Rated Operating Temperature(NOCT)	45±2°C													

STC : ☀️ Light intensity 1000W/m² 🌡️ Module temperature : 25°C 🌫️ Air quality : AM1.5
 NOCT : ☀️ Light intensity 800W/m² 🌡️ Environment temperature : 20°C 🌫️ Air quality : AM1.5 🌬️ Wind speed : 1m/s



Tangshan Haitai New Energy Technology Co., Ltd
 Add : No.88, Haomen Road, Yutian County, Tangshan City, Hebei Province, China
 Tel : +86-315-5051826
 Email : ht@htsolargroup.com