

**For a Free Quote:**

Web: **EnergyPal.com/solar**

Call: **1-800-990-3725**

Email: **contact@energypal.com**

# **EnergyPal**

## **Solar Panel Guide Specification Data Sheet**

**Shaoxing Holt New Energy Co., Ltd.  
HTMO-A Mono BIPV  
HTMO-A36-175-3**

Also available on the web at  
[EnergyPal.com/shaoxing-holt-new-energy-co-ltd-solar-panels/htmo-a36-175-3](http://EnergyPal.com/shaoxing-holt-new-energy-co-ltd-solar-panels/htmo-a36-175-3)

## 双玻组件 Building Integrated PV

衰减率低、超强抗PID，可透阳光。适用于：光伏电站、阳光房、玻璃幕墙、农业大棚等。

合田新能源双玻组件由两块钢化玻璃、EVA 或 PVB 胶膜和太阳能电池片，经过层压机高温层压组成复合层，电池片之间由导线串、并联汇集到引线端所形成的光伏电池组件。

组件包括由上至下依次设置的第一层钢化玻璃层（玻璃最厚可使用 10mm 厚度）、第二层 PVB 或 EVA、第三层单晶或多晶电池片组层、第四层 PVB 或 EVA（使用 EVA 粘合时会在第四层之后再加一层 EVA 增加粘合度增强防水性）和第五层钢化玻璃（玻璃最厚可使用 10mm 厚度）。

The decay rate is low, super anti PID, by the sun. Suitable for: PV power station, sunlight room, glass curtain wall, solar farm and so on.

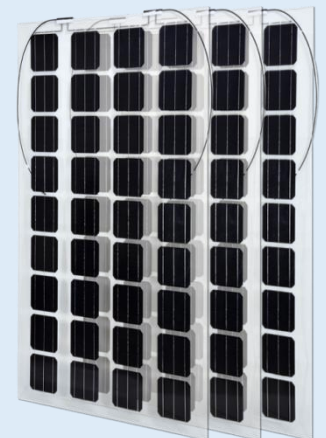
In field of new energy building integrated pv by two pieces of toughened glass, EVA or PVB film and solar cells, after laminating machine high temperature of laminated composite layer, between cell by wire together in series, in parallel to the pins of the pv cell components.

Components including from top to bottom in turn set up the first layer of toughened glass (glass can use the thickest 10 mm thickness), the second layer PVB or EVA, the third layer of monocrystalline or polycrystalline solar cell group layer, layer 4 PVB or EVA (using EVA adhesive will add a layer after layer 4 EVA increase cohesive strength waterproof) and the fifth layer of tempered glass (glass can use the thickest 10 mm thickness).

### 单晶 HTMO-A 系列 Monocrystalline series

型号 Modle	Pm (W)	Vm (V)	Im (A)	Vo (V)	Isc (A)	透光率	尺寸(mm) Size	重量 (kg) Weight
HTMO-A72-350	350	38.2	9.15	46.6	9.55	10%	1950*986*7	34
HTMO-A72-345	345	37.8	9.12	46.1	9.52			
HTMO-A60-290	290	31.7	9.15	38.7	9.56			
HTMO-A60-285	285	31.3	9.11	38.2	9.50	25%		
HTMO-A36-180	180	19.7	9.13	24.1	9.54			
HTMO-A36-175	175	19.2	9.12	23.4	9.53	55%		
HTMO-A60-290	290	31.7	9.15	38.7	9.56	10%	1644*986*7	28
HTMO-A60-285	285	31.3	9.11	38.2	9.50			
HTMO-A36-180	180	19.7	9.13	24.1	9.54			
HTMO-A36-175	175	19.2	9.12	23.4	9.53	45%		
HTMO-A36-180	180	19.7	9.13	24.1	9.54			
HTMO-A36-175	175	19.2	9.12	23.4	9.53	10%		
HTMO-A36-180	180	19.7	9.13	24.1	9.54	10%	1474*674*7	17
HTMO-A36-175	175	19.2	9.12	23.4	9.53			

支持非标定制 Supporting non-standard customization



HTMO-A36-175 45%

### 多晶 HTMU-A 系列 Polycrystalline series

型号 Modle	Pm (W)	Vm (V)	Im (A)	Vo (V)	Isc (A)	透光率	尺寸(mm) Size	重量 (kg) Weight
HTMU-A72-330	330	36.6	9.01	44.7	9.41	10%	1950*986*7	34
HTMU-A72-325	325	36.2	8.99	44.1	9.39			
HTMU-A60-275	275	30.5	9.01	37.2	9.41			
HTMU-A60-270	270	30.1	8.98	36.7	9.38	25%		
HTMU-A36-170	170	18.9	9.01	23.0	9.41			
HTMU-A36-165	165	18.4	8.99	22.4	9.39	55%		
HTMU-A60-275	275	30.5	9.01	37.2	9.41	10%	1644*986*7	28
HTMU-A60-270	270	30.1	8.98	36.7	9.38			
HTMU-A36-170	170	18.9	9.01	23.0	9.41			
HTMU-A36-165	165	18.4	8.99	22.4	9.39	45%		
HTMU-A36-170	170	18.9	9.01	23.0	9.41			
HTMU-A36-165	165	18.4	8.99	22.4	9.39	10%		
HTMU-A36-170	170	18.9	9.01	23.0	9.41	10%	1474*674*7	17
HTMU-A36-165	165	18.4	8.99	22.4	9.39			

支持非标定制 Supporting non-standard customization



HTMU-A36-165 55%

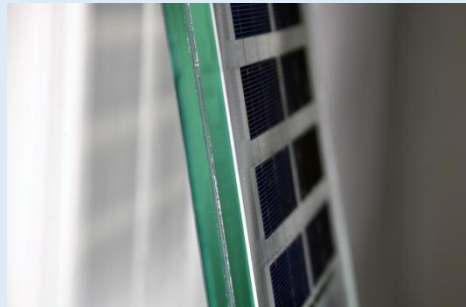
# 使用案例 Use cases



# 非标件 Non-standard



6+6mm



10+10mm



梯形 trapezoid BIPV

# 资质 Certificate

