

For a Free Quote:

Web: EnergyPal.com/solar

Call: 1-800-990-3725

Email: contact@energypal.com

EnergyPal

Solar Panel Guide Specification Data Sheet

**Shaoxing Holt New Energy Co., Ltd.
HTMO/U-N Small Module
HTMO-N40**

Also available on the web at
EnergyPal.com/shaoxing-holt-new-energy-co-ltd-solar-panels/htmo-n40

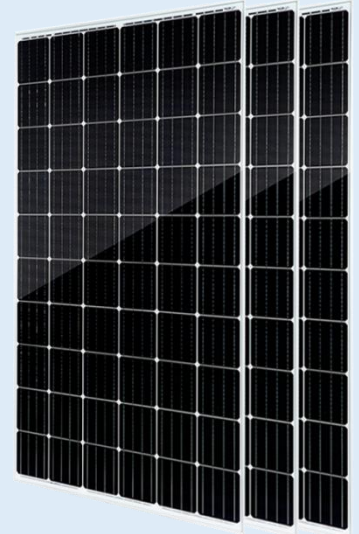
常规太阳能电池组件 Standard Solar Panels

适用于：光伏电站、光伏扬水系统、光伏路灯、光伏户外设备等应用产品

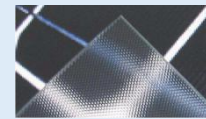
Suitable for: PV power plants, PV pumping system, PV streetlight, PV outdoor equipment and other application products

单晶 HTMO-A 系列 (Monocrystalline series)

| 型号 Module | P _m (W) | V _m (V) | I _m (A) | V _o (V) | I _{sc} (A) | 尺寸(mm) Size | 重量 (kg) Weight |
|--------------|-----------------------|-----------------------|-----------------------|-----------------------|------------------------|----------------------------|----------------------|
| HTMO-A72-365 | 365 | 39.5 | 9.24 | 48.1 | 9.64 | 1956*992*45 1946*990*40 | 21 |
| HTMO-A72-360 | 360 | 39.1 | 9.21 | 47.7 | 9.61 | | |
| HTMO-A72-355 | 355 | 38.7 | 9.17 | 47.2 | 9.66 | | |
| HTMO-A72-350 | 350 | 38.2 | 9.15 | 46.6 | 9.55 | | |
| HTMO-A72-345 | 345 | 37.8 | 9.12 | 46.1 | 9.52 | | |
| HTMO-A60-305 | 305 | 33.1 | 9.23 | 40.4 | 9.63 | 1650*992*40 1640*990*35 | 19.5 |
| HTMO-A60-300 | 300 | 32.6 | 9.20 | 39.8 | 9.31 | | |
| HTMO-A60-295 | 295 | 32.1 | 9.18 | 39.2 | 9.58 | | |
| HTMO-A60-290 | 290 | 31.7 | 9.15 | 38.7 | 9.56 | | |
| HTMO-A60-285 | 285 | 31.3 | 9.11 | 38.2 | 9.50 | | |
| HTMO-A36-195 | 195 | 21.1 | 9.25 | 25.7 | 9.65 | 1480*680*35 1480*680*30 | 11.6 |
| HTMO-A36-190 | 190 | 20.7 | 9.20 | 25.3 | 9.62 | | |
| HTMO-A36-185 | 185 | 20.2 | 9.16 | 24.6 | 9.56 | | |
| HTMO-A36-180 | 180 | 19.7 | 9.13 | 24.1 | 9.54 | | |
| HTMO-A36-175 | 175 | 19.2 | 9.12 | 23.4 | 9.53 | | |
| HTMO-A36-115 | 115 | 20.2 | 5.69 | 24.6 | 6.09 | 1200*550*30 1200*550*25 | 7.5 |
| HTMO-A36-110 | 110 | 20.1 | 5.47 | 24.5 | 6.07 | | |
| HTMO-A36-105 | 105 | 19.8 | 5.31 | 24.2 | 5.92 | | |
| HTMO-A36-100 | 100 | 19.5 | 5.13 | 23.8 | 5.53 | | |



HTMO-A60-285



多晶 HTMU-A 系列 (Polycrystalline series)

| 型号 Module | P _m (W) | V _m (V) | I _m (A) | V _o (V) | I _{sc} (A) | 尺寸(mm) Size | 重量 (kg) Weight |
|--------------|-----------------------|-----------------------|-----------------------|-----------------------|------------------------|----------------------------|----------------------|
| HTMU-A72-345 | 345 | 37.4 | 9.23 | 45.6 | 9.63 | 1956*992*45 1946*990*40 | 21 |
| HTMU-A72-340 | 340 | 37.2 | 9.15 | 45.4 | 9.55 | | |
| HTMU-A72-335 | 335 | 36.8 | 9.11 | 44.9 | 9.51 | | |
| HTMU-A72-330 | 330 | 36.6 | 9.01 | 44.7 | 9.42 | | |
| HTMU-A72-325 | 325 | 36.2 | 8.99 | 44.2 | 9.39 | | |
| HTMU-A60-290 | 290 | 31.5 | 9.22 | 38.4 | 9.62 | 1650*992*40 1640*990*35 | 19.5 |
| HTMU-A60-285 | 285 | 31.1 | 9.16 | 38.0 | 9.56 | | |
| HTMU-A60-280 | 280 | 30.8 | 9.1 | 37.5 | 9.5 | | |
| HTMU-A60-275 | 275 | 30.5 | 9.01 | 37.2 | 9.41 | | |
| HTMU-A60-270 | 270 | 30.1 | 8.98 | 36.7 | 9.38 | | |
| HTMU-A36-185 | 185 | 20.1 | 9.22 | 24.5 | 9.62 | 1480*680*35 1480*680*30 | 11.6 |
| HTMU-A36-180 | 180 | 19.7 | 9.13 | 24.1 | 9.53 | | |
| HTMU-A36-175 | 175 | 19.3 | 9.09 | 23.5 | 9.49 | | |
| HTMU-A36-170 | 170 | 18.9 | 9.01 | 23.0 | 9.41 | | |
| HTMU-A36-165 | 165 | 18.4 | 8.99 | 22.4 | 9.39 | | |



HTMU-A60-270



小组件 HTMO/U-N 系列 (PV module series)

| 型号 Model | Pm (W) | Vm (V) | Im (A) | Vo (V) | Isc (A) | 尺寸(mm) Size | 重量 (kg) Weight |
|-------------|-----------|-----------|-----------|-----------|------------|----------------|----------------------|
| HTMO-N60 | 60 | 18 | 3.33 | 21.9 | 3.93 | 660*540*30 | 3.8 |
| HTMO-N40 | 40 | 18 | 2.22 | 21.9 | 2.82 | 360*690*25 | 2.75 |
| HTMO-N15 | 15 | 18 | 0.83 | 21.9 | 1.32 | 355*300*25 | 1.4 |
| HTMO-N10 | 10 | 18 | 0.56 | 21.9 | 1.12 | 360*240*25 | 1.05 |
| HTMO-N10 | 10 | 9.21 | 1.12 | 10.9 | 1.3 | 342*291*15 | 1.1 |
| HTMO-N8 | 8 | 18 | 0.44 | 21.9 | 0.57 | 275*275*17 | 0.82 |
| HTMU-N35 | 35 | 18 | 1.94 | 21.9 | 2.48 | 360*690*25 | 2.75 |
| HTMU-N30 | 30 | 18 | 1.66 | 21.9 | 2.16 | 535*460*30 | 2.7 |



HTMO-N10

使用案例 (Use cases)



资质 (Certificate)

