

**For a Free Quote:**

**Web: [EnergyPal.com/solar](http://EnergyPal.com/solar)**

**Call: 1-800-990-3725**

**Email: [contact@energypal.com](mailto:contact@energypal.com)**

# **EnergyPal**

## **Solar Panel Guide Specification Data Sheet**

**Shenzhen Juguangneng Science & Technology Co.,  
Ltd.**

**JGN-10M-PET-BL1**

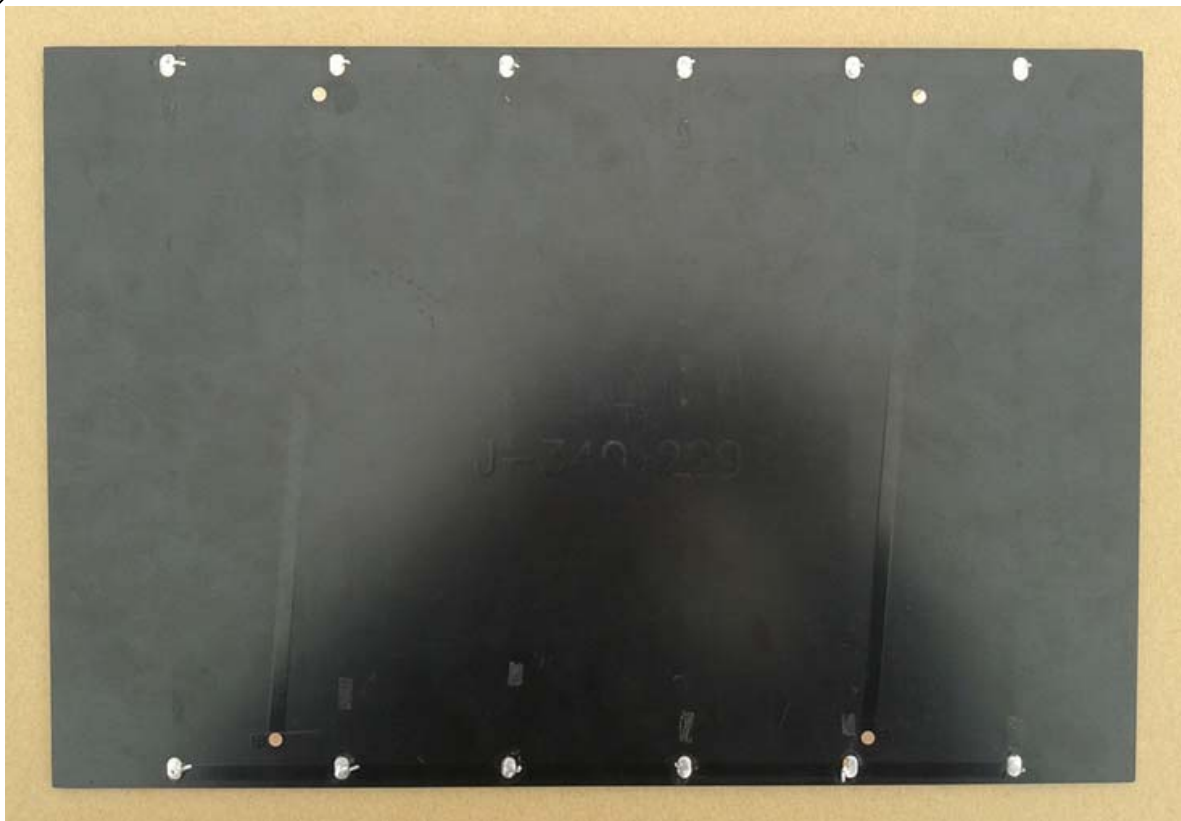
**JGN-10M-PET-BL1**

Also available on the web at  
[EnergyPal.com/shenzhen-juguangneng-science-technology-co-ltd-solar-panels/jgn-10m-pet-bl1](http://EnergyPal.com/shenzhen-juguangneng-science-technology-co-ltd-solar-panels/jgn-10m-pet-bl1)

**10W/18V PET mono solar panel's specifications**

<b>Model Number</b>	<b>JGN-10M-PET-BL1</b>
<b>Peak power Pm(W)</b>	10W
<b>Max. power voltage Vmp(V)</b>	18V
<b>Max. power current Imp(mA)</b>	0.56A
<b>Open circuit voltage Voc(V)</b>	21.6V
<b>Short circuit current Isc(A)</b>	0.62A
<b>Backing material</b>	PCB(Printed circuit can be customized).
<b>Backing PCB dimension#1(mm)</b>	340*229*1.6 (±0.3mm)
<b>PET solar panel thickness(mm)</b>	3.0 (±0.3mm)
<b>PET plastic edges</b>	<b>Optional.</b>
<b>Net weight(kgs)</b>	0.36 (kgs); without PET plastic edges.
<b>Solar cell type / No. of Cells</b>	monocrystalline silicon / 36-cell in series.
<b>Solar cells origin</b>	Taiwan, A grade
<b>Solar cells efficiency</b>	over 18.0%
<b>Solar panel's encapsulation method</b>	PET (frosted surface) lamination.
<b>Testing Condition</b>	Irradiance:1000W/m2, Cell temperature:25°C, AM:1.5(air mass).
<b>Operating temperature range</b>	-20°C ~ +60°C
<b>Operating humidity range</b>	45%~95%
<b>Lifespan</b>	≥5 years.
<b>Certification / Standards</b>	CE, RoHS
<b>Other Certification</b>	ISO9001:2008
<b>Others</b>	Printed Logo or Words on the PCB is optional.

Sample images for reference only:



No PET plastic edges.