

**For a Free Quote:**

**Web: [EnergyPal.com/solar](http://EnergyPal.com/solar)**

**Call: 1-800-990-3725**

**Email: [contact@energypal.com](mailto:contact@energypal.com)**

# **EnergyPal**

## **Solar Panel Guide Specification Data Sheet**

**Jinko Solar Holding Co., Ltd.  
Swan Bifacial HC 60M 320-340W  
JKM340M-60H-TV**

Also available on the web at  
[EnergyPal.com/jinko-solar-holding-co-ltd-solar-panels/jkm340m-60h-tv](http://EnergyPal.com/jinko-solar-holding-co-ltd-solar-panels/jkm340m-60h-tv)

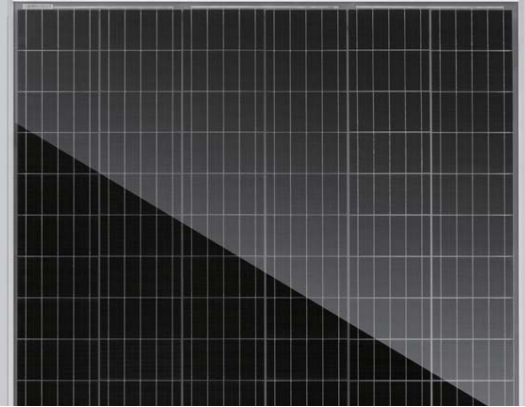
# Swan Bifacial HC 60M 315-335 Watt

MONOCRYSTALLINE MODULE

Positive power tolerance of 0~+3%

ISO9001:2008, ISO14001:2004, OHSAS18001 certified factory.

IEC61215, IEC61730 certified products.



## KEY FEATURES



### 5 Busbar Solar Cell

5 busbar solar cell adopts new technology to improve the efficiency of modules, offers a better aesthetic appearance, making it perfect for rooftop installation.



### PID Resistance

Excellent Anti-PID performance guarantee limited power degradation for mass production.



### Higher Lifetime Power Yield:

0.55% annual power degradation  
30 year linear power warranty



### Saving BOS Cost:

Light-weight design for easy installation and low BOS cost



### Higher power output:

Module power increases 5-25% generally (per different reflective condition)  
lower LCOE and higher IRR

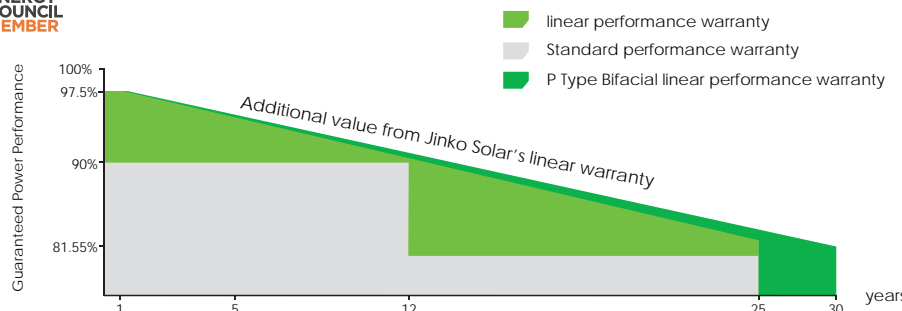


### Better low-light performance:

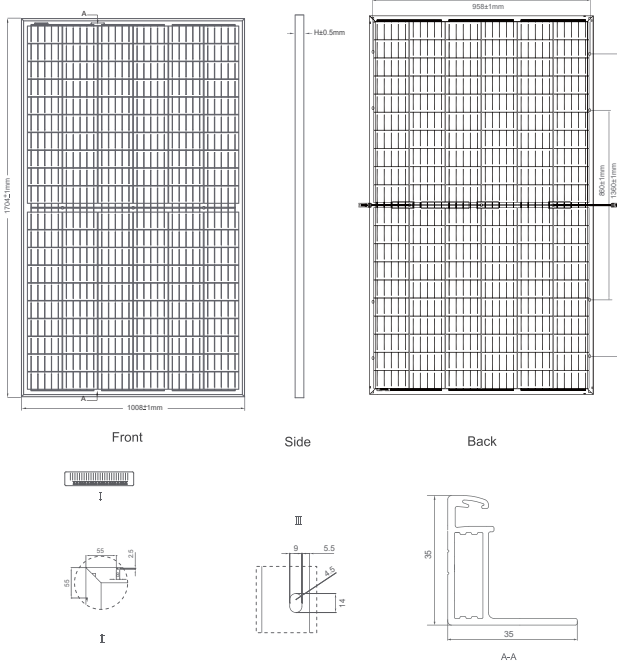
Excellent performance in low-light environments (e.g. early morning, dusk, and cloud, etc.)

## LINEAR PERFORMANCE WARRANTY

12 Year Product Warranty • 30 Year Linear Power Warranty  
0.55% Annual Degradation Over 30 years



## Engineering Drawings

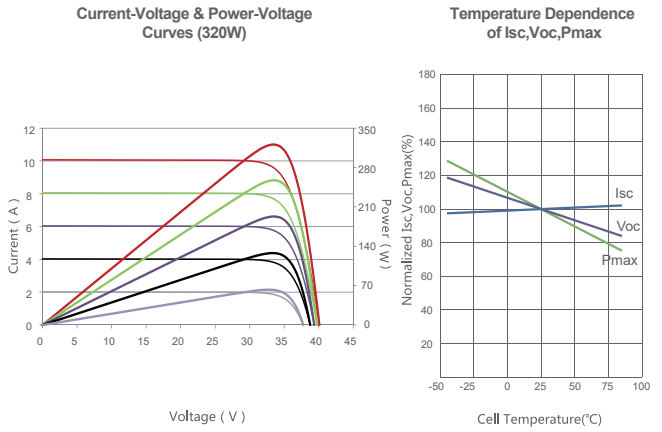


## Packaging Configuration

( Two pallets = One stack )

31pcs/pallets, 62pcs/stack, 806pcs/ 40'HQ Container

## Electrical Performance & Temperature Dependence



## Mechanical Characteristics

Cell Type	Mono PERC 158.75×158.75mm
No. of cells	120 (6×20)
Dimensions	1704×1008×35mm (67.09×39.69×1.38 inch)
Weight	19.5kg (43.0 lbs)
Front Glass	3.2mm, Anti-Reflection Coating, High Transmission, Low Iron, Tempered Glass
Frame	Anodized Aluminium Alloy
Junction Box	IP67 Rated
Output Cables	TUV 1×4.0mm <sup>2</sup> (+): 250mm, (-): 150mm or Customized Length

## SPECIFICATIONS

Module Type	JKM315M-60H-TV		JKM320M-60H-TV		JKM325M-60H-TV		JKM330M-60H-TV		JKM335M-60H-TV	
	STC	NOCT	STC	NOCT	STC	NOCT	STC	NOCT	STC	NOCT
Maximum Power (Pmax)	315Wp	234Wp	320Wp	238Wp	325Wp	241Wp	330Wp	245Wp	335Wp	249Wp
Maximum Power Voltage (Vmp)	32.70V	30.69V	32.90V	30.93V	33.10V	31.13V	33.24V	31.33V	33.40V	31.48V
Maximum Power Current (Imp)	9.63A	7.62A	9.73A	7.68A	9.82A	7.75A	9.93A	7.82A	10.03A	7.90A
Open-circuit Voltage (Voc)	39.90V	37.58V	40.10V	37.77V	40.30V	37.96V	40.39V	38.04V	40.46V	38.11V
Short-circuit Current (Isc)	9.99A	8.07A	10.07A	8.13A	10.15A	8.20A	10.25A	8.28A	10.34A	8.35A
Module Efficiency STC (%)	18.33%		18.62%		18.91%		19.20%		19.49%	
Operating Temperature(°C)	-40°C~+85°C									
Maximum system voltage	1500VDC (IEC)									
Maximum series fuse rating	25A									
Power tolerance	0~+3%									
Temperature coefficients of Pmax	-0.36%/°C									
Temperature coefficients of Voc	-0.29%/°C									
Temperature coefficients of Isc	0.048%/°C									
Nominal operating cell temperature (NOCT)	45±2°C									
Refer. Bifacial Factor	70±5%									

## BIFACIAL OUTPUT-REARSIDE POWER GAIN

		JKM315M-60H-TV	JKM320M-60H-TV	JKM325M-60H-TV	JKM330M-60H-TV	JKM335M-60H-TV
5%	Maximum Power (Pmax)	331Wp	336Wp	341Wp	347Wp	352Wp
	Module Efficiency STC (%)	19.24%	19.55%	19.86%	20.16%	20.47%
15%	Maximum Power (Pmax)	362Wp	368Wp	374Wp	380Wp	385Wp
	Module Efficiency STC (%)	21.08%	21.41%	21.75%	22.08%	22.42%
25%	Maximum Power (Pmax)	394Wp	400Wp	406Wp	413Wp	419Wp
	Module Efficiency STC (%)	22.91%	23.27%	23.64%	24.00%	24.37%

\* STC: Irradiance 1000W/m<sup>2</sup> Cell Temperature 25°C

AM=1.5

NOCT: Irradiance 800W/m<sup>2</sup> Ambient Temperature 20°C

AM=1.5

Wind Speed 1m/s

\* Power measurement tolerance: ± 3%

The company reserves the final right for explanation on any of the information presented hereby. JKM315-335M-60H-TV-F35-A2-EN