

**For a Free Quote:**

**Web: [EnergyPal.com/solar](http://EnergyPal.com/solar)**

**Call: 1-800-990-3725**

**Email: [contact@energypal.com](mailto:contact@energypal.com)**

# **EnergyPal**

## **Solar Panel Guide Specification Data Sheet**

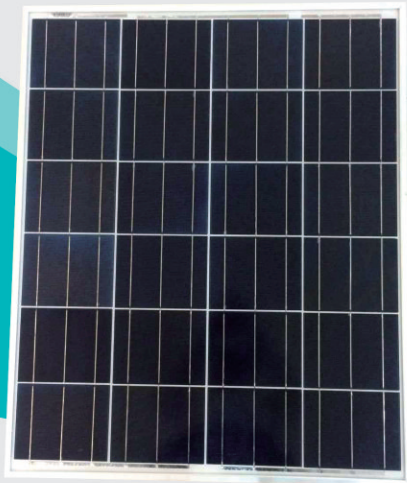
**Zhejiang Kingdom Solar Energy Technic Co., Ltd.**

**KD -P100-120**

**KD-P100**

Also available on the web at

[EnergyPal.com/zhejiang-kingdom-solar-energy-technic-co-ltd-solar-panels/kd-p100](http://EnergyPal.com/zhejiang-kingdom-solar-energy-technic-co-ltd-solar-panels/kd-p100)



高质量太阳能组件  
High Quality Solar Panel  
**KD-P100W--120W**

**型号**  
**Module type:**

KD-P100W, KD-P105W, KD-P110W, KD-P115W, KD-P120W

组件最高功率  
Highest module efficiency:

**15.94%**



正公差  
Positive tolerance offer: 0-+5w

材料和工艺质保  
Material & Workmanship warranty:

**10 year**



欧洲大银行能接受  
TUV bankable in all European big banks

输出功率保证  
Linear power output warranty:

**25 year**



证书能承受风速(2400 pa)和机械负载(5400 pa)  
Certificated to withstand wind (2400pa) and mechanical load (5400pa)

**ZHEJIANG KINGDOM SOLAR ENERGY TECHNIC CO.,LTD**  
Tel: 0086-576-85508111 Fax: 0086-576-85178266  
Website: <http://www.kingdomsolar.net>

Address: Hui Feng North Road, Jiangnan Development Area,  
Linhai, Zhejiang, China

**E-mail:**  
[kingdom@kingdomsolar.net](mailto:kingdom@kingdomsolar.net)  
[panel@kingdomsolar.net](mailto:panel@kingdomsolar.net)  
[technic@kingdomsolar.net](mailto:technic@kingdomsolar.net)  
[kdsolar@kingdomsolar.net](mailto:kdsolar@kingdomsolar.net)  
[solar@kingdomsolar.net](mailto:solar@kingdomsolar.net)  
[poly@kingdomsolar.net](mailto:poly@kingdomsolar.net)  
[power@kingdomsolar.net](mailto:power@kingdomsolar.net)  
[energy@kingdomsolar.net](mailto:energy@kingdomsolar.net)  
[solarpanel@kingdomsolar.net](mailto:solarpanel@kingdomsolar.net)  
[kdm@kingdomsolar.net](mailto:kdm@kingdomsolar.net)

**规格**  
**Specifications**

Type 型号	KD-P100	KD-P105	KD-P110	KD-P115	KD-P120
Wattage(w) 瓦数	100	105	110	115	120
Open Circuit Voltage (V) 开路电压	22.92	23.05	21.24	22.68	23.12
Short circuit Current (I) 闭路电流	5.84	6.08	6.70	6.77	6.96
Maximum Power Voltage (V) 最大输出电压	18.50	18.60	17.70	18.30	18.60
Maximum Power Current (I) 最大输出电流	5.41	5.64	6.21	6.28	6.45
Cell Efficiency (%) 电池片效率	17.10%	18.00%	16.80%	17.50%	18.20%
Module Efficiency (%) 组件效率	14.80%	15.54%	14.59%	15.26%	15.94%
Maximum System Voltage (V) 最大系统电压	DC1000V				
Temperature Coefficient of Voc VOC温度系数	-0.270%/°C				
Temperature Coefficient of Isc Isc温度系数	+0.045%/°C				
Temperature Coefficient of Pmax Pmax温度系数	-0.408%/°C				
Maximum Series Fuse Rating 最大串联保险丝额定电流(A)	10A				
Junction Box 接线盒	with 2bypass diodes				
Cable 电缆	Length 900mm, 4mm <sup>2</sup>				
Tempered Glass 钢化玻璃	3.2mm(0.13 inches)tempered glass 3.2mm (0.13 英寸)钢化玻璃				
Cell Encapsulation 电池片封装	EVA ( Ethylene-Vinyl-Acetate)				
Back Sheet 背板	Triple-layer 三层				
Frame 边框	Anodized aluminum alloy 铝合金				
Maximum Surface Load Capacity 最大表面负荷	5400Pa				
Hail 撞击	steel ball fall down from 1m height 钢球从1米高度跌落				
Temperature Range 温度范围	-40°C to +85°C				

**让阳光改变生活**  
**言必行 行必果 坚持到底**

**LET THE SUN CHANGE THE LIFE**  
If promise, must keep; if act, must achieve; never give up till end!