

For a Free Quote:

Web: EnergyPal.com/solar

Call: 1-800-990-3725

Email: contact@energypal.com

EnergyPal

Solar Panel Guide Specification Data Sheet

Shanxi Lu'an Photovoltaics Technology Co., Ltd.

LA72-6-290-320P

LA72-6-310P

Also available on the web at

EnergyPal.com/shanxi-lu-an-photovoltaics-technology-co-ltd-solar-panels/la72-6-310p



山西路安太阳能科技有限责任公司

SHANXI LU' AN PHOTOVOLTAIC TECHNOLOGY CO., LTD

地址: 山西省长治市漳泽新型工业园区

邮编: 046011 电话: +86 355 5916666

销售热线: +86 355 5916888

info@luansolar.com http:// www.luansolar.com



山西路安太阳能科技有限责任公司

SHANXI LU' AN PHOTOVOLTAIC TECHNOLOGY CO., LTD

Zhangze New Industrial Park, Changzhi City, Shanxi Province

Pos Code: 046011 Telephone: +86 355 5916666

Sales Tel: +86 355 5916888

info@luansolar.com http:// www.luansolar.com

LA72-6-290P (290-320)

太阳能组件

电气特性

型号	Voc(V)	Isc(A)	Vmp(V)	Imp(A)	Pmax(W)
LA72-6-290P	45.0	8.59	36.2	8.02	290
LA72-6-295P	45.1	8.72	36.3	8.13	295
LA72-6-300P	45.2	8.84	36.4	8.25	300
LA72-6-305P	45.3	8.97	36.5	8.36	305
LA72-6-310P	45.4	9.10	36.6	8.47	310
LA72-6-315P	45.5	9.23	36.7	8.59	315
LA72-6-320P	45.6	9.35	36.8	8.70	320

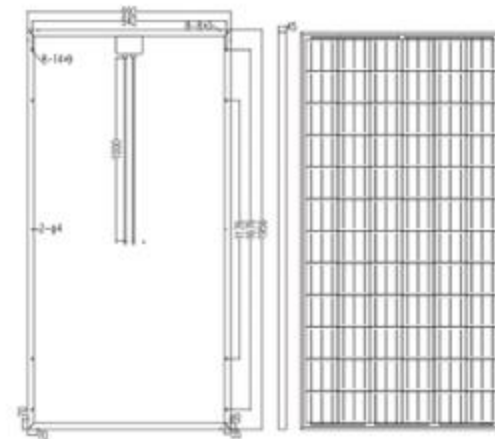
* STC: 光照强度1000W/m², 组件温度25℃, AM: 1.5

结构参数

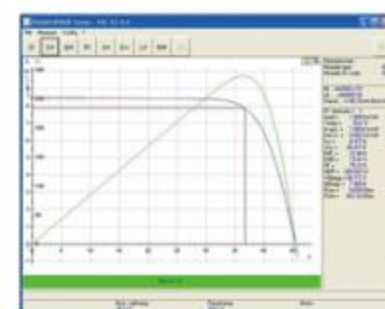
电池片种类	P-Si
组件尺寸	1956 × 992 × 50(mm)
电池片数量	72 (6*12)
工作温度	-40℃ ~ +85℃
电池片规格	156*156(mm)
组件重量	24kg
线缆长度	1200mm
前盖玻璃	镀膜玻璃

品质参数

最大系统电压	1000 V
开路电压温度系数	-0.32%/℃
短路电流温度系数	+0.04%/℃
最大功率温度系数	-0.42%/℃
电池额定工作温度	45 ± 2℃
保险丝额定值	15A



I-V曲线特性



LA72-6-290P (290W-320W)

太阳能组件

Electrical Characteristics

Module	Voc(V)	Isc(A)	Vmp(V)	Imp(A)	Pmax(W)
LA72-6-290P	45.0	8.59	36.2	8.02	290
LA72-6-295P	45.1	8.72	36.3	8.13	295
LA72-6-300P	45.2	8.84	36.4	8.25	300
LA72-6-305P	45.3	8.97	36.5	8.36	305
LA72-6-310P	45.4	9.10	36.6	8.47	310
LA72-6-315P	45.5	9.23	36.7	8.59	315
LA72-6-320P	45.6	9.35	36.8	8.70	320

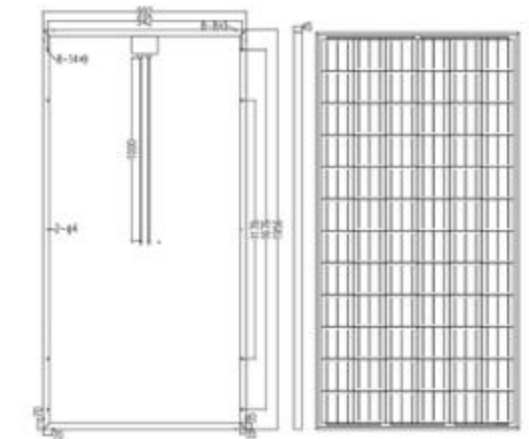
NOTES: All technical data at Standard Test Conditions(STC): Irradiance level 1000W/m² spectrum AM1.5 and cell temperature 25℃.

Dimension and parameter

Type cells	P-Si
Dimensions	1956 × 992 × 50(mm)
Number of cells	72 (6*12)
Temperature cycling range	-40℃ ~ +85℃
Solar cells	156*156(mm)
Weight	24kg
Length of cables	1200mm
Glass of front cover	镀膜玻璃

Qualification

Maximum System Voltage	1000 V
Temperature coefficients of voltage	-0.32%/℃
Temperature coefficients of current	+0.04%/℃
Temperature coefficients of power	-0.42%/℃
Nominal Operating Cell Temperature (NOCT)	45 ± 2℃
Maximum series fuse rating	15A



I-V Curve

