

**For a Free Quote:**

Web: [EnergyPal.com/solar](http://EnergyPal.com/solar)

Call: 1-800-990-3725

Email: [contact@energypal.com](mailto:contact@energypal.com)

# **EnergyPal**

## **Solar Panel Guide Specification Data Sheet**

**Shanxi Lu'an Photovoltaics Technology Co., Ltd.**

**LA72-6-300-340M**

**LA72-6-315M**

Also available on the web at

[EnergyPal.com/shanxi-lu-an-photovoltaics-technology-co-ltd-solar-panels/la72-6-315m](http://EnergyPal.com/shanxi-lu-an-photovoltaics-technology-co-ltd-solar-panels/la72-6-315m)



山西路安太阳能科技有限责任公司

SHANXI LU' AN PHOTOVOLTAIC TECHNOLOGY CO., LTD

地址: 山西省长治市漳泽新型工业园区

邮编: 046011 电话: +86 355 5916666

销售热线: +86 355 5916888

info@luansolar.com http://www.luansolar.com



山西路安太阳能科技有限责任公司

SHANXI LU' AN PHOTOVOLTAIC TECHNOLOGY CO., LTD

Zhangze New Industrial Park, Changzhi City, Shanxi Province

Pos Code: 046011 Telephone: +86 355 5916666

Sales Tel: +86 355 5916888

info@luansolar.com http://www.luansolar.com

## LA72-6-300M (300-340)

太阳能组件

### 电气特性

型号	Voc(V)	Isc(A)	Vmp(V)	Imp(A)	Pmax(W)
LA72-6-300M	45.7	8.75	36.9	8.14	300
LA72-6-305M	45.8	8.88	37.0	8.25	305
LA72-6-310M	45.9	9.00	37.1	8.36	310
LA72-6-315M	46.0	9.13	37.2	8.47	315
LA72-6-320M	46.1	9.25	37.3	8.58	320
LA72-6-325M	46.2	9.37	37.4	8.69	325
LA72-6-330M	46.3	9.50	37.5	8.80	330
LA72-6-335M	46.4	9.62	37.6	8.91	335
LA72-6-340M	46.5	9.74	37.7	9.02	340

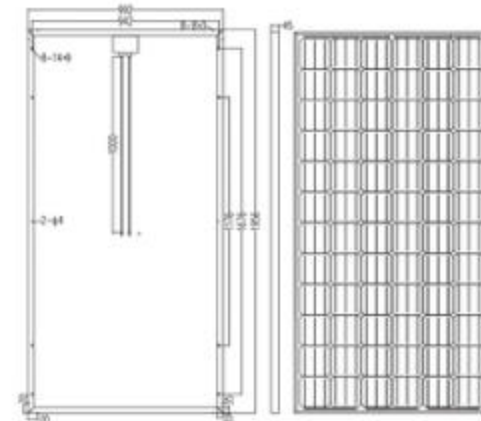
\* STC: 光照强度1000W/m<sup>2</sup>, 组件温度25℃, AM: 1.5

### 结构参数

电池片种类	P-Si
组件尺寸	1956 × 992 × 50(mm)
电池片数量	72 (6*12)
工作温度	-40℃ ~ +85℃
电池片规格	156*156(mm)
组件重量	24kg
线缆长度	1200mm
前盖玻璃	镀膜玻璃

### 品质参数

最大系统电压	1000 V
开路电压温度系数	-0.32%/℃
短路电流温度系数	+0.04%/℃
最大功率温度系数	-0.42%/℃
电池额定工作温度	45 ± 2℃
保险丝额定值	15A



## LA72-6-300M (300W-340W)

太阳能组件

### Electrical Characteristics

Module	Voc(V)	Isc(A)	Vmp(V)	Imp(A)	Pmax(W)
LA72-6-300M	45.7	8.75	36.9	8.14	300
LA72-6-305M	45.8	8.88	37.0	8.25	305
LA72-6-310M	45.9	9.00	37.1	8.36	310
LA72-6-315M	46.0	9.13	37.2	8.47	315
LA72-6-320M	46.1	9.25	37.3	8.58	320
LA72-6-325M	46.2	9.37	37.4	8.69	325
LA72-6-330M	46.3	9.50	37.5	8.80	330
LA72-6-335M	46.4	9.62	37.6	8.91	335
LA72-6-340M	46.5	9.74	37.7	9.02	340

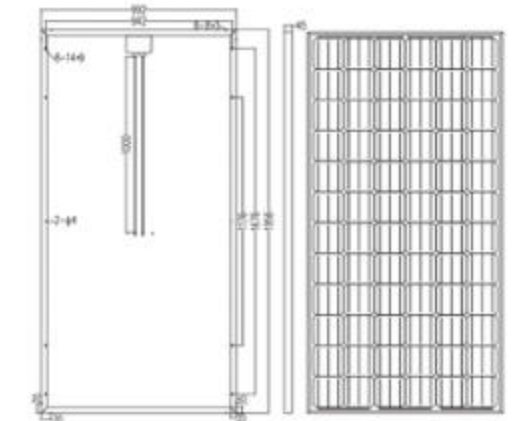
NOTES: All technical data at Standard Test Conditions(STC): Irradiance level 1000W/m<sup>2</sup> spectrum AM1.5 and cell temperature 25℃.

### Dimension and parameter

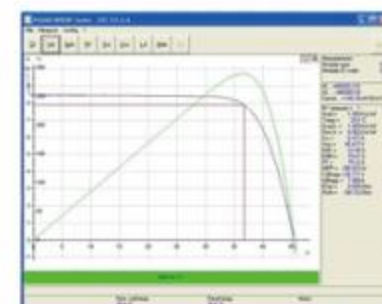
Type cells	P-Si
Dimensions	1956 × 992 × 50(mm)
Number of cells	72 (6*12)
Temperature cycling range	-40℃ ~ +85℃
Solar cells	156*156(mm)
Weight	24kg
Length of cables	1200mm
Glass of front cover	镀膜玻璃

### Qualification

Maximum System Voltage	1000 V
Temperature coefficients of voltage	-0.32%/℃
Temperature coefficients of current	+0.04%/℃
Temperature coefficients of power	-0.42%/℃
Nominal Operating Cell Temperature (NOCT)	45 ± 2℃
Maximum series fuse rating	15A



### I-V曲线特性



### I-V Curve

