

For a Free Quote:

Web: EnergyPal.com/solar

Call: 1-800-990-3725

Email: contact@energypal.com

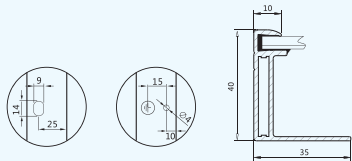
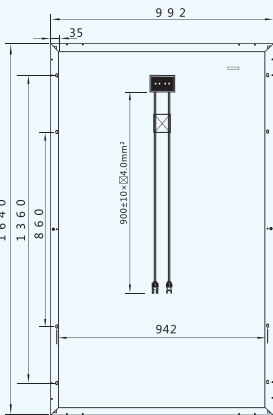
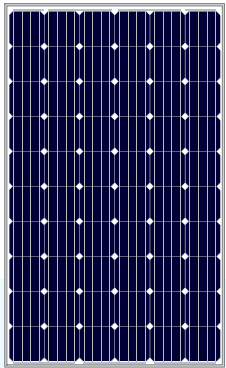
EnergyPal

Solar Panel Guide Specification Data Sheet

Shandong Linuo Photovoltaic Hi-Tech Co., Ltd.
LN260(30)MS-4 (270-285W Mono)
LN260(30)MS-4 275W

Also available on the web at
EnergyPal.com/shandong-linuo-photovoltaic-hi-tech-co-ltd-solar-panels/ln260-30-ms-4-275w

LN260(30)MS-4 (270-285W Mono)



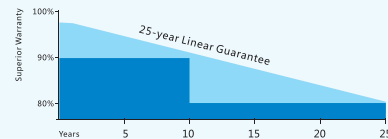
Key Features

- Power output:(0-+5w)100%plus tolerance
- Safer solar:
Panel-level disconnect to remotely deactivate module
- Quality insurance:25years irrevocable warranty insurance
- Harsh environment :
By TUV nord harsh PID test, salt fog, ammonia test
- Mechanical load:
5400pa snow load and2400pa wind load
- Low light performance:
High performance in low solar irradiation
- After-sales service:Feedback in 24 hours

Comprehensive Certificates

- IEC61215, IEC61730, IEC61701,
- TUV, UL, PV Cycle, JET, INMETRO,CEC, MCS, CE, IEC
- ISO9001:2008
- ISO14001:2004
- OHSAS 18001:1999

Superior Warranty



25-year Linear Power Output Warranty

In the first year of warranty, the peak power of poly-crystalline module should be no less than 97.5% of the rated power (Pmax.) and 96.5% for mono-crystalline module. At the end of the 25th year, power of modules should be at least 80% of rated power. The annual decline in performance is 0.70% maximum for poly-crystalline modules and 0.68% for mono-crystalline modules.

Electrical Parameters@STC

| Pmax (W) | Umpp (V) | Impp (A) | Uoc (V) | Isc (A) | FF | Module Efficiency | Max System Voltage | Max Series Fuse |
|----------|----------|----------|---------|---------|--------|-------------------|--------------------|-----------------|
| 270 | 31.47 | 8.58 | 34.70 | 9.10 | 76.87% | 16.60% | 1000V | 15A |
| 275 | 31.80 | 8.65 | 34.70 | 9.10 | 76.97% | 16.90% | 1000V | 15A |
| 280 | 32.04 | 8.74 | 34.70 | 9.10 | 76.98% | 17.20% | 1000V | 15A |
| 285 | 32.25 | 8.84 | 34.70 | 9.10 | 76.99% | 17.50% | 1000V | 15A |

Temperature Coefficient

Temperature Cycling Range : -40°C ~ +85°C
 Nominal Operating Cell Temperature : 46±2°C
 Temperature Coefficient of Isc : 0.049%/°C
 Temperature Coefficient of Voc : -0.000%/°C
 Temperature Coefficient of Pmax : -0.439%/°C

Mechanical Data

Module Dimension : 1640×992×40mm
 Weight : 18.5kg
 Snow/Wind Load : 5400/2400 Pa
 Number of Cells : 60pcs
 Thickness of Glass : 3.2mm
 Junction Box : IP65 Rated
 Cable: UL 12AWG/TUV 1x4.0mm²,length900mm

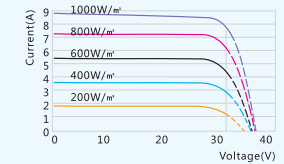
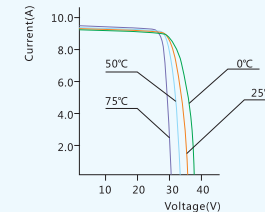
Guarantee

10-year warranty on materials & workmanship
 25-year linear power output warranty
 (10 years at 90%, 25 years at 80%)

Packaging Configuration

Modules Per Pallet: 26 pcs
 Modules Per 40' HQ : 728 pcs

270W Mono Module I-V Curve



STC: Irradiance 1000W/m² Temperature 25°C AM=1.5
 NOCT: Irradiance 800W/m² Temperature 20°C Wind Speed 1m/s



Specifications subject to technical changes and tests, Linuo Power reserves the right of final interpretation