

For a Free Quote:

Web: EnergyPal.com/solar

Call: 1-800-990-3725

Email: contact@energypal.com

EnergyPal

Solar Panel Guide Specification Data Sheet

Megasol Energie AG

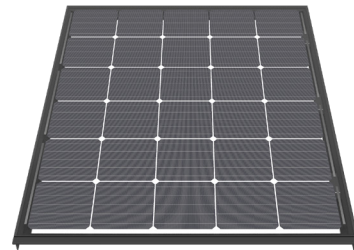
**M202-6x5/M202-3x10/ M101-3x5-t BF GG NICER 2
M101-3x5-t 77W**

Also available on the web at
EnergyPal.com/megasol-energie-ag-solar-panels/m101-3x5-t-77w

Border solar modules for M403-60-t BF GG NICER 2

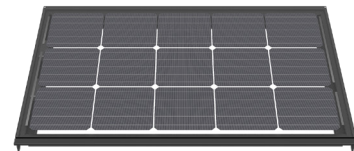
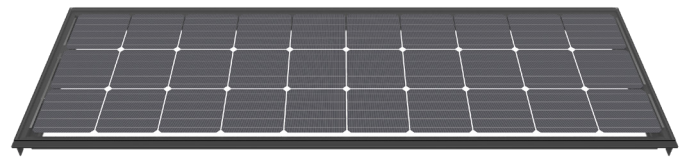
3338.0894 Swiss Premium M202-6x5-t BF GG NICER 2

| | | | |
|-----------------------------|----------------|----------------------|----------------------|
| Nominal power (Pmpp) | 155 Wp | 171 Wp | 202 Wp |
| Nominal voltage (Umpp) | 16.4 V | 16.4 V | 16.5 V |
| Nominal current (Impp) | 9.47 A | 10.40 A | 12.25 A |
| Open circuit voltage (Uoc) | 19.5 V | 19.6 V | 19.7 V |
| Short circuit current (Isc) | 9.81 A | 10.77 A | 12.69 A |
| Number of cells (matrix) | 30 (6x 5) | +10% BF ¹ | +30% BF ¹ |
| Dimensions (LxWxH) ±3.0 mm | 1045x858x60 mm | | |
| Modular dimensions (LxW) | 1016x863 mm | | |
| Weight | 19.5 kg | | |



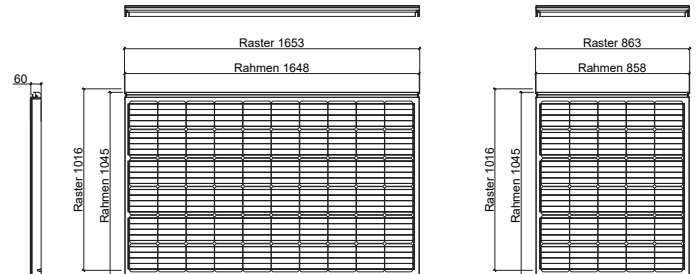
3338.0893 Swiss Premium M202-3x10-t BF GG NICER 2

| | | | |
|-----------------------------|----------------|----------------------|----------------------|
| Nominal power (Pmpp) | 155 Wp | 171 Wp | 202 Wp |
| Nominal voltage (Umpp) | 16.4 V | 16.4 V | 16.5 V |
| Nominal current (Impp) | 9.47 A | 10.40 A | 12.25 A |
| Open circuit voltage (Uoc) | 19.5 V | 19.6 V | 19.7 V |
| Short circuit current (Isc) | 9.81 A | 10.77 A | 12.69 A |
| Number of cells (matrix) | 30 (3x 10) | +10% BF ¹ | +30% BF ¹ |
| Dimensions (LxWxH) ±3.0 mm | 577x1648x60 mm | | |
| Modular dimensions (LxW) | 548x1653 mm | | |
| Weight | 20.5 kg | | |



3338.0895 Swiss Premium M101-3x5-t BF GG NICER 2

| | | | |
|-----------------------------|---------------|----------------------|----------------------|
| Nominal power (Pmpp) | 77 Wp | 85 Wp | 101 Wp |
| Nominal voltage (Umpp) | 8.2 V | 8.2 V | 8.3 V |
| Nominal current (Impp) | 9.47 A | 10.40 A | 12.25 A |
| Open circuit voltage (Uoc) | 9.7 V | 9.8 V | 9.8 V |
| Short circuit current (Isc) | 9.81 A | 10.77 A | 12.69 A |
| Number of cells (matrix) | 15 (3x 5) | +10% BF ¹ | +30% BF ¹ |
| Dimensions (LxWxH) ±3.0 mm | 577x858x60 mm | | |
| Modular dimensions (LxW) | 548x863 mm | | |
| Weight | 11.5 kg | | |



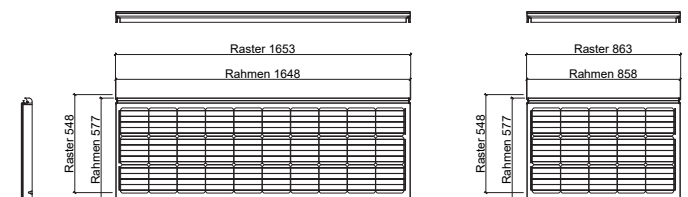
Customized special modules

3338.0991 Special module NICER Cat. 1 active / complexity: low

3338.0992 Special module NICER Cat. 2 active / complexity: medium

3338.0993 Special module NICER Cat. 3 active / complexity: high

3338.0994 Special module NICER Cat. 4 passive / complexity: high



E-mail: info@megasol.ch
 Hotline: +41 62 919 90 90
www.megasol.ch



Border modules are electrically compatible with the corresponding basic module (60 solar cells).
 For technical reasons of production, despite utmost care, the surface properties and optical colour effect may vary from the basic module.

STC (Standard Test Conditions): irradiance 1000 W/m², cell temperature 25°C, AM 1.5
 Measuring tolerances ±3 % (Pmpp); ±10 % (Umpp, Impp, Uoc, Isc)
¹With bifacial gain, depending on mounting distance and albedo of the substrate



Note: The instructions in the installation manual must be strictly complied with. Further information about approved utilization of products can be found in the installation manual or can be requested from the technical service.

Megasol partner

Subject to errors and technical modifications.
 © Megasol Energy Ltd | Version: 03/2019