

**For a Free Quote:**

**Web: [EnergyPal.com/solar](http://EnergyPal.com/solar)**

**Call: 1-800-990-3725**

**Email: [contact@energypal.com](mailto:contact@energypal.com)**

# **EnergyPal**

## **Solar Panel Guide Specification Data Sheet**

**Ningbo Jinshi Solar Electrical Science and  
Technology Co., Ltd.**

**NBJ-330P-72**

**NBJ-330P**

Also available on the web at  
[EnergyPal.com/ningbo-jinshi-solar-electrical-science-and-technology-co-ltd-solar-panels/nbj-330p](http://EnergyPal.com/ningbo-jinshi-solar-electrical-science-and-technology-co-ltd-solar-panels/nbj-330p)



- Solar cell: High efficiency crystalline solar cell. Even if under the weak light, the solar module can produce maximum power output.
- Tempered glass: Anti-reflecting coating and high transmission rate glass increasing the power output and mechanical strength of solar module.
- EVA and TPT: Using high quality EVA and TPT to prevent destroying and water.
- All frames: Without screw scorneer connection. 8 holes on the frame can be installed easily.
- Junction box: Multi-functional and water-proof junction box.
- Good performance of preventing from atrocious weather such as wind and hails.
- Resisting moisture and etching effectively, not effected by geology.
- Certificates issued by international authorities: ISO Quality Management system, CE, TUV ( IEC61215 and IEC61730 )
- Limited power degradation of Eagle module caused by PID effect is guaranteed under 60°C/85% RH condition for mass production.
- High salt and ammonia resistance certified by TUV NORD



### Mechanical Characteristics:

Cell Size (mm)	156X156
No. of cells	72(6X12)
Module Size (mm)	1956X992X40
Module Weight (KG)	21

## NBJ-330P

JINSHI SOLAR MODEL

## 72 CELLS

MULTICRYSTALLINE MODULE

## 300-330W

POWEROUTPUTRANGE

## 17.0%

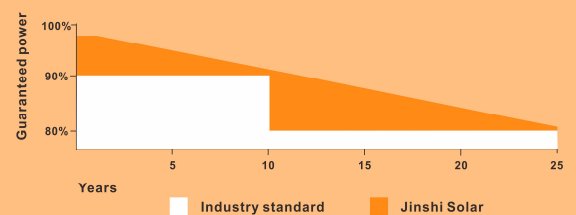
MAXIMUM EFFICIENCY

## 0~+3%

POWER OUTPUT GUARANTEE

### LINEAR PERFORMANCE WARRANTY

12 Year product warranty • 25 Year linear power warranty



### Packaging Specifications:

Number of modules per pallet	26
Number of pallets per 40' container	24
Packaging box dimensions (cm)	198x110x112
Box Weight (KG)	593

This publication summarizes product warranty and specification, which is subject to change without notice.

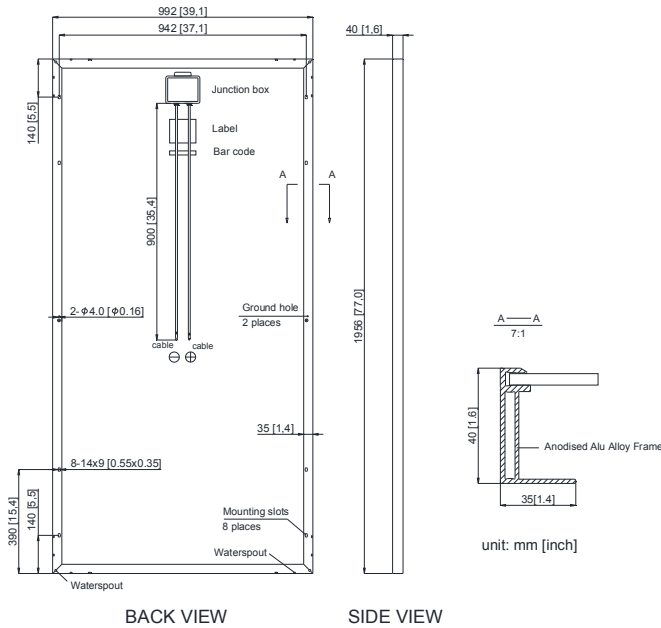


**Construction Materials:**

Front Glass	3.2mm, Low Iron, Tempered Glass
Frame	Anodized Aluminum Alloy Type 6063-T5
Junction Box	IP 65 Rated (Black)
Output Cables	TUV 1x4mm <sup>2</sup> , length:900mm

Connector	PV-ST101 (IP67)
Encapsulation Material	EVA(0.45±0.03mm thickness)
Back Foil	White TPT(0.32±0.03mm thickness)
Fixing Adhesive	Silicone Sealant(White)

**Module Diagram:**



**Temperature Coefficient:**

Power Tolerance	0~+3%
Temperature Coefficient of Pmax	(-0.43±0.05)%/°C
Temperature Coefficient of Voc	(-0.33±0.02)%/°C
Temperature Coefficient of Isc	(0.058±0.01) %/°C
NOTC(°C)	(47±2) °C

**Operating Conditions:**

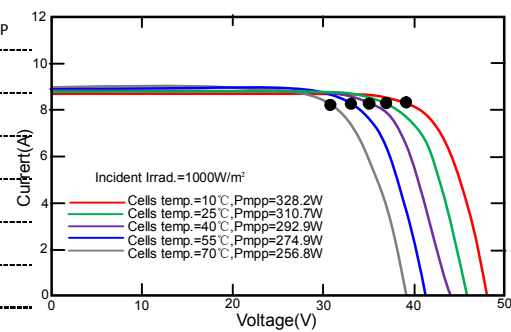
Max. system voltage	1500VDC (IEC)
Max. system fuse rating (A)	15
Operating temperature (°C)	-40~85
Max. static load, front (e.g., snow) pa	5400
Max. static load, back (e.g., wind) pa	2400

**Electrical Parameters at Standard Test Conditions (STC)**

Module type	NBJ-300P	NBJ-305P	NBJ-310P	NBJ-315P	NBJ-320P	NBJ-325P	NBJ-330P
Rated Maximum Power (Pmax/W)	300	305	310	315	320	325	330
Maximum Power Voltage (Vmp/V)	36.41	36.71	37.00	37.20	37.45	37.71	37.85
Open-circuit Voltage (Voc/V)	45.20	45.35	45.45	45.60	45.75	46.00	46.14
Maximum Power Current (Imp/A)	8.24	8.31	8.38	8.47	8.55	8.62	8.72
Short-circuit Current (Isc/A)	8.73	8.79	8.85	8.90	9.00	9.06	9.18
Module Efficiency (%)	15.5	15.7	16.0	16.2	16.5	16.7	17.0

STC: Irradiance 1000W/M2    Module Temperature: 25°C    AM=1.5

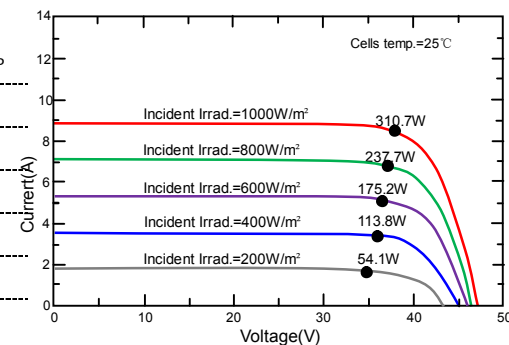
**I-V Curve:**



**Electrical Parameters at Nominal Operating Cell Temperature (NOCT)**

Module type	NBJ-300P	NBJ-305P	NBJ-310P	NBJ-315P	NBJ-320P	NBJ-325P	NBJ-330P
Max Power (Pmax/W)	217.80	221.43	225.06	229.00	232.90	237.91	240.67
Maximum Power Voltage (Vmp/V)	33.77	33.91	34.05	34.25	34.45	34.63	34.83
Open-circuit Voltage (Voc/V)	42.31	42.47	42.58	42.60	42.65	42.94	43.12
Maximum Power Current (Imp/A)	6.45	6.53	6.61	6.68	6.76	6.87	6.91
Short-circuit Current (Isc/A)	6.89	6.93	6.99	7.02	7.10	7.21	7.25

Under Nominal Operating Cell Temperature (NOCT), irradiance of 800 W/m<sup>2</sup>, spectrum AM1.5, ambient temperature 20°C, wind speed 1m/s.



This publication summarizes product warranty and specification, which is subject to change without notice.