

For a Free Quote:

Web: EnergyPal.com/solar

Call: 1-800-990-3725

Email: contact@energypal.com

EnergyPal

Solar Panel Guide Specification Data Sheet

Ningbo Nesol Energy Co., Ltd.

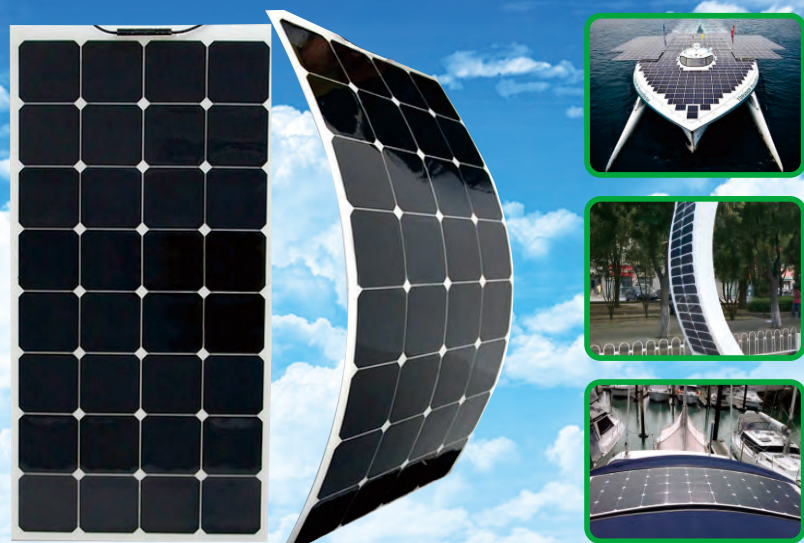
NE-SP6W-300W

NE-SP60W

Also available on the web at
EnergyPal.com/ningbo-nesol-energy-co-ltd-solar-panels/ne-sp60w



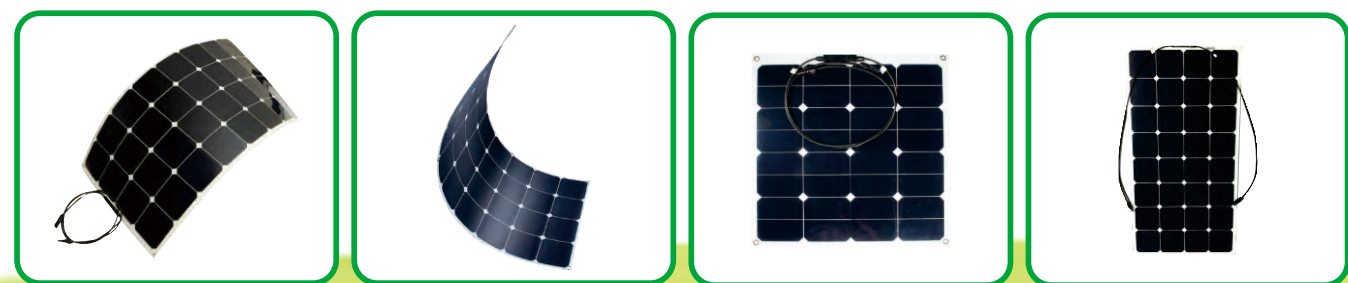
NINGBO NESOL ENERGY CO.,LTD



FLEXIBLE SOLAR PANEL

SUNPOWER SOLAR CELL

Model	Max Power(W)	Open Circuit Voltage(Voc)	Short Circuit Current(Isc)	Max Power Voltage (Vmp)	Max Power Current(Imp)	Cell Efficiency	Net Weight(Kg)	Dimension(mm)
NE-SP6W	6	7.2	1	6	1.12	20.50%	0.1	280*150*3
NE-SP18W	18	23.7	1	19.4	0.9	20.50%	0.3	434*277*3
NE-SP25W	25	21.6	1.5	18	1.4	20.00%	0.6	560*277*3
NE-SP30W	30	21.2	1.8	17.6	1.7	19.60%	0.5	535*378*3
NE-SP50W	50	21.2	3.1	17.6	2.8	21.50%	0.7	545*535*3
NE-SP60W	60	21	3.8	17.5	3.4	19.60%	0.9	735*535*3
NE-SP80W	80	18.8	5.61	15.4	5.19	19.00%	1.2	920*540*3
NE-SP90W	90	18.5	6.3	15.2	5.9	20.60%	1.2	920*540*3
NE-SP100W	100	21.6	6	17.8	5.6	19.90%	1.4	1050*540*3
NE-SP110W	110	23.7	5.9	19.8	5.6	20.00%	1.5	1175*540*3
NE-SP120W	120	26.4	5.9	22	5.5	20.00%	1.8	1305*540*3
NE-SP135W	135	29.5	5.8	24.9	5.5	20.00%	2	1435*540*3
NE-SP150W	150	32	5.9	27.4	5.5	20.00%	2.5	1300*660*3
NE-SP180W	180	40	6	33	5.5	19.00%	3	1300*800*3
NE-SP200W	200	42	6.3	35	5.7	19.00%	3.5	1435*800*3
NE-SP220W	220	48.3	5.9	39.82	5.5	19.50%	4.5	1560*800*3
NE-SP250W	250	54	6.1	45	5.6	20.00%	5	1810*800*3
NE-SP300W	300	66	6.5	55	5.5	19.00%	6.5	1810*920*3



PORTABLE & FOLDING SOLAR PANEL

Mono

Model No.	NE-FM60	NE-FM80	NE-FM100	NE-FM120	NE-FM140	NE-FM160	NE-FM200
Cell Type	Mono	Mono	Mono	Mono	Mono	Mono	Mono
Maximum Power(Pmax)	60	80	100	120	140	160	200
Maximum Power Voltage(Vmp)	18.1	18.2	18.2	18.3	18.3	18.4	18.4
Maximum Power Current(Imp)	3.31	4.40	5.49	6.56	7.65	8.70	10.87
Open Circuit Voltage(Voc)	22.3	22.4	22.4	22.5	22.5	22.6	22.6
Short Circuit Current(Isc)	3.53	4.67	5.85	6.93	8.07	9.16	11.45
Controller Current	10A	10A	10A	10A	10A	10A	15A
Controller Voltage	12V/24V	12V/24V	12V/24V	12V/24V	12V/24V	12V/24V	12V/24V
Open Dimension(mm)	740*603*33	1060*548*33	1060*663*33	1060*783*33	1380*683*33	1380*773*33	1380*948*33
Closed Dimension(mm)	603*380*68	548*540*68	663*540*68	783*540*68	683*700*68	773*700*68	948*700*68
Net Weight(kg)	6.5	7.8	9.2	10.3	11.4	12.8	15.9

Poly

Model No.	NE-FP60	NE-FP80	NE-FP100	NE-FP120	NE-FP140	NE-FP160	NE-FP200
Cell Type	Poly	Poly	Poly	Poly	Poly	Poly	Poly
Maximum Power(Pmax)	60	80	100	120	140	160	200
Maximum Power Voltage(Vmp)	17.9	18.0	18.0	18.1	18.1	18.2	18.2
Maximum Power Current(Imp)	3.35	4.44	5.56	6.63	7.73	8.79	10.99
Open Circuit Voltage(Voc)	22.0	22.1	22.1	22.3	22.3	22.4	22.4
Short Circuit Current(Isc)	3.58	4.74	5.93	7.02	8.19	9.29	11.62
Controller Current	10A	10A	10A	10A	10A	10A	15A
Controller Voltage	12V/24V	12V/24V	12V/24V	12V/24V	12V/24V	12V/24V	12V/24V
Open Dimension(mm)	740*653*33	1060*573*33	1060*698*33	1060*823*33	1380*723*33	1380*823*33	1380*1008*33
Closed Dimension(mm)	653*380*68	573*540*68	698*540*68	825*540*68	723*700*68	823*700*68	1008*700*68
Net Weight(kg)	6.8	8.1	9.4	10.8	12.0	13.6	16.5



MANUFACTURE

No.299 ,Jinda Road, Zhenhai District, Ningbo City,China.

Rm802,No.138,Zhongxing Road, Yinzhou, Ningbo.China.

0086-574-56172625 0086-574-56172619

nesolenergy@126.com / marketing@mgs-solar.com

