

**For a Free Quote:**

Web: **EnergyPal.com/solar**

Call: **1-800-990-3725**

Email: **contact@energypal.com**

# **EnergyPal**

## **Solar Panel Guide Specification Data Sheet**

**RITEK Corporation  
PM42-6RT 165-180  
PM42-6RT-165**

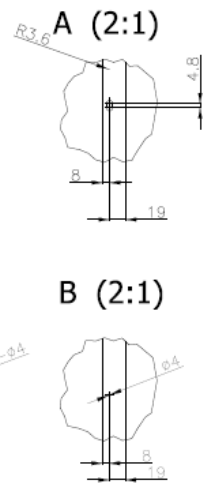
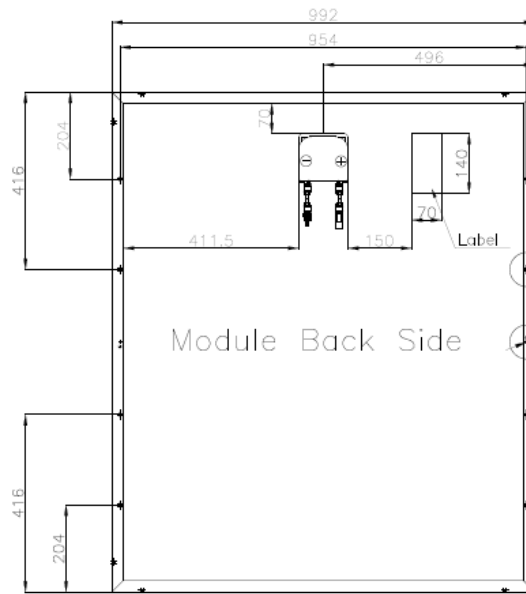
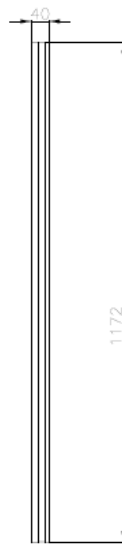
Also available on the web at  
[EnergyPal.com/ritek-corporation-solar-panels/pm42-6rt-165](http://EnergyPal.com/ritek-corporation-solar-panels/pm42-6rt-165)



*Join the RITEK Solar Revolution*

**PM42-6RT Series**

**6" Poly-crystalline Solar Cell, 6 x 7 Cells.**



Unit: in [mm]



## Product Characteristics

### Physical Specifications

Dimension [L x W x H]	46.14 x 39.06 x 1.57in (1172 x 992 x 40mm)
Module Area	12.49 sq. ft (1.16 m <sup>2</sup> )
Weight	24.25 lb (11 Kg)

\*The actual measurements shall depends on the manufacturer's standard.

### Electrical Characteristics: Performance at STC\*1

Model Type	PM42-6RT-165	PM42-6RT-170	PM42-6RT-175	PM42-6RT-180
Peak Power Rating, Pmax	165W	170W	175W	180W
Power Tolerance	-0 / +5W	-0 / +5W	-0 / +5W	-0 / +5W
Peak Power Voltage, Vpm	20.97	21.21	21.53	21.83
Peak Power Current, Ipm	7.95	8.05	8.18	8.31
Open Circuit Voltage, Voc	26.30	26.51	26.83	27.13
Short Circuit Current, Isc	8.52	8.61	8.74	8.86
Module Efficiency	14.19%	14.62%	15.05%	15.48%

\*STC: Standard Test Condition, 1000W/m<sup>2</sup>, AM 1.5, 25°C

### System Integration Parameter & Safety Rating

Maximum System Voltage (U.S. & Canada)	600VDC
Maximum System Voltage (Area Not in the U.S. & Canada)	1000VDC (According to Norms in Each Area)
Series Fuse Rating	15A
Fire Safety Class	Class C
Application Class	Class A (Safety Class II)
Environmental Operating Temperature (°F, °C)	-40 to 185°F, -40 to 85°C

### Packing Specifications

Modules Per Carton	12pcs/Carton
Modules Per Pallet	24pcs/Pallet (=2 Cartons/Pallet)
Pallet Dimension [L x W x H]	54.17 x 44.65 x 44.17 in, or 1376 x 1134 x 1122 mm
Pallet Weight	946 Lbs (429Kg)
20ft Container Capacity (pcs)	384
40ft Container Capacity (pcs)	768

\*The accurate weight should depends on the product which customer received.

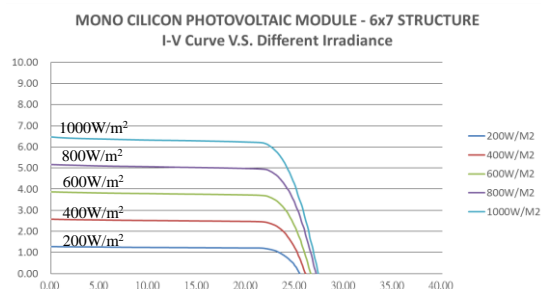
### Limited Warranty\*\*\*

Product	10 Years
90% Output Power	10 Years
80% Output Power	25 Years

\*\*\*For details, please read our warranty letter.

### Thermal Characteristics

NOCT (Nominal Operating Cell Temperature) °F, °C	116.06°F, 46.70°C
Temperature Coefficient TK Isc (Short Circuit Current) α	+0.120%/°C
Temperature Coefficient TK Voc (Open Circuit Voltage) β	-0.307%/°C
Temperature Coefficient TK Pmax (Peak Power) γ	-0.434%/°C



## ■ About RITEK Solar

RITEK is a 25-year public traded company, we are a global professional manufacturer to provide solar modules and solar system construction. Through best-quality, and high-performance solar modules and a variety of solar solutions, RITEK Solar can meet and satisfy your perfect standard and need.

## ■ High Performance

- ⊙ Own key technologies and capabilities to rapidly ramp up.
- ⊙ Module maximum conversion efficiency > 14%.

## ■ Best Quality and Reliability

- ⊙ We guarantee that all the solar modules are made in Taiwan.
- ⊙ Modules tested follow IEC61215, IEC61730-1 & 2 and UL1703, to ensure the safety and performance.
- ⊙ Manufacturing facility certified to ISO 9001 Quality Management System standards.

## ■ Contact Windows ■

### ⊙ Headquarters, Taiwan: RITEK Corporation

No.17, Kuanfu N. Rd., Hsin Chu Industrial Park 30316, Taiwan

**Tel:** +886-03-598-7298    **Fax:** +886-03-597-8449

**e-mail:** [ritsolar@ritek.com.tw](mailto:ritsolar@ritek.com.tw)

### ⊙ RITEK America, Advanced Media Inc.

1440 Bridgegate Dr., Suite 395 Diamond Bar, CA 91765, USA

**Tel:** +1-909-861-2269    **Fax:** +1-909-612-4258

**e-mail:** [solarsales@ritekusa.com](mailto:solarsales@ritekusa.com)

### ⊙ RITEK Europe, Conrexx Technology B.V.

Keurmeesterstraat 18 2984 BA Ridderkerk , The Netherlands

**Tel:** +31-180-44-1666    **Fax:** +31-180-44-1667

**e-mail:** [richard.kwok@conrexx.com](mailto:richard.kwok@conrexx.com)