

For a Free Quote:

Web: EnergyPal.com/solar

Call: 1-800-990-3725

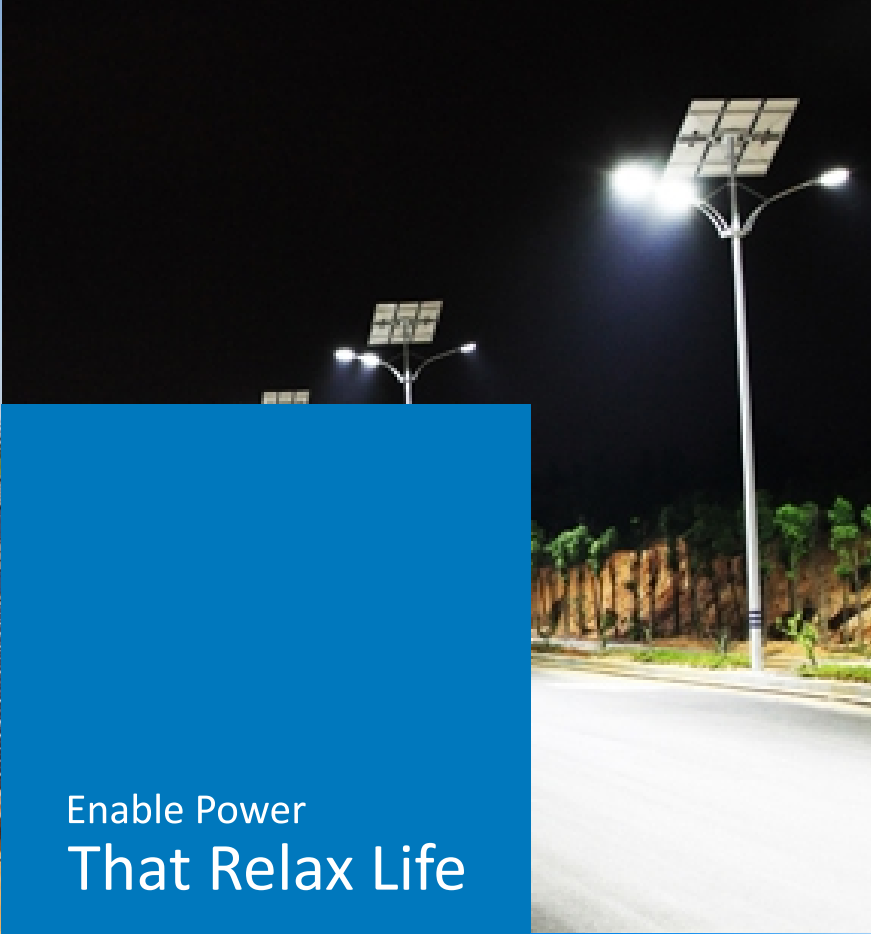
Email: contact@energypal.com

EnergyPal

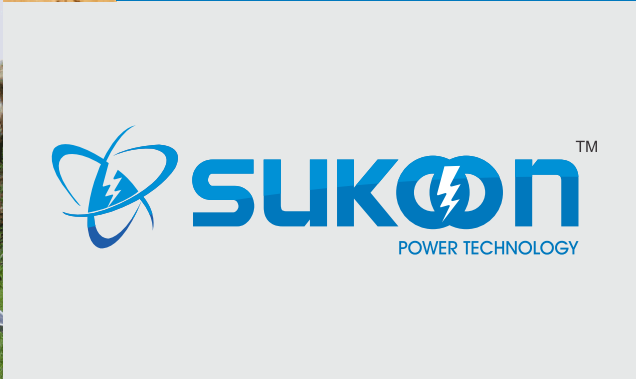
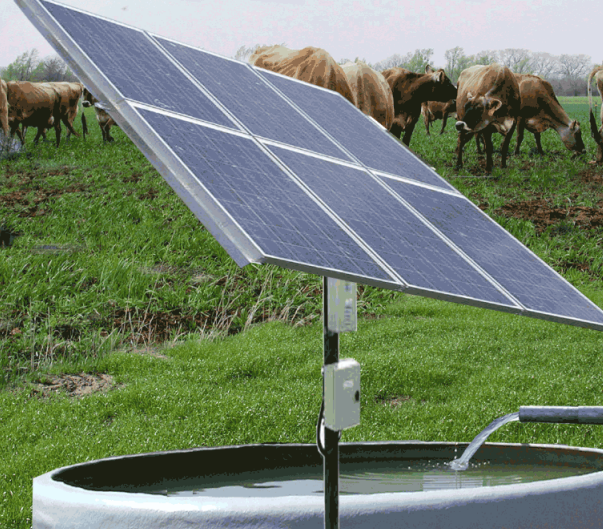
**Solar Panel Guide
Specification Data Sheet**

**Sukoon Power Technology
Poly SPT12P018-020
Poly SPT12P020**

Also available on the web at
EnergyPal.com/sukoon-power-technology-solar-panels/poly-spt12p020



Enable Power
That Relax Life



COMPANY OVERVIEW

Basically Sukoon Power Technology is Renewable Energy Product Company that has been established to fulfill the lack of electricity worldwide by providing sustainable Energy specially like SOLAR. The company always prefer latest technology that has reconstituted Solar Products. In this world of inflation, everyone is thinking to reduce the expenditure, So Go Solar with Sukoon is the best option that will not even reduce the expenditure but also uses natural energy source, helps to economy and reduce the inflation rate, with latest technology and excellent technical and customer support, Sukoon Power Technology is providing power that will relax your life as the company having technically expertise management with peerless goals.

VISION

To provide quality product and sustainable energy that enlightens the world with supplying maximum sources of energy to domestic as well as Global market considering the economy and become a most admirable company.

MISSION

Satisfied quality product with service is all we concern.

- To supply product safely on before commitment at any level.
- To provide economic power that feeds Sukoon (Relief) to the user.
- Safe operation and execution of projects.
- All time adoption of latest technology.



SOLAR PANEL

A key element to produce DC Electricity from Sun radiation is known as Solar Panel. It is the part of the solar system which has efficiency depending upon quality of cells, glass and other prime materials used. Sukoon Power Technology has expertise to choose quality material as per IS standards that will be used to prepare Solar PV Module according to MNRE Norms and deliver superior products as required by customers.

Features:

- Wide Range from 5Wp to 300Wp.
- Multi and Mono crystalline PV Modules.
- Providing PV Modules approved by MNRE Accredited Labs, prepared as per MNRE guidelines.
- Tolerance +/- 3%, plug and play Connectors with maximum power transmission ability.
- IP 65, 1000VDC, with Schottky By-Pass diodes.
- High transparent efficient & Low Iron tempered Glasses that can bear load up to 5400 pa.
- Clear anodized aluminum alloy frame with high load bearing Strength.



Solar PV Module Range

Model	Pmp* (Wp)	No. of cells	Dimension (mm)	Weight (Kg)	Vmp (V)	Imp (A)	Voc (V)	Isc (A)	Module Efficiency %
SPT24P300	300Wp	72	1991 x 991 x 42	22.85	36	7.28	44	7.89	15.34
SPT24P280	280Wp	72	1991 x 991 x 42	22.85	36	7.9	44	8.27	14.32
SPT24P250	250Wp	72	1666 x 991 x 42	21.50	36	7.0	44	7.60	15.29
SPT18P250		60			31	8.10	36	8.80	
SPT24P240	240Wp	72	1666 x 991 x 42	21.50	36	6.70	44	7.30	14.68
SPT18P240		60			30	8.09	36	8.78	
SPT24P230	230Wp	72	1666 x 991 x 42	21.50	36	6.44	44	6.98	14.07
SPT18P230		60			30	7.70	36	8.40	
SPT24P225	225Wp	72	1666 x 991 x 42	21.50	36	6.28	44	6.84	13.76
SPT18P225		60			30	7.60	36	8.20	
SPT24P220	220Wp	72	1481 x 991 x 35	16.30	36	6.15	44	6.70	15.14
SPT18P220		60	1666 x 991 x 42	21.50	30	7.50	36	8.05	13.45
		54			27.4	8.20	33	8.75	
SPT24P210	210Wp	72	1481 x 991 x 35	16.30	36	5.90	44	6.40	14.45
SPT24P200	200Wp	72	1481 x 991 x 35	16.30	36	5.59	44	6.08	13.77
SPT18P200		60	1666 x 991 x 42	21.50	30	6.80	36	7.30	12.23
		54			21.50	27.4	7.50	33	
SPT24P180	180Wp	72	1481 x 991 x 35	16.30	36	5.05	44	5.48	12.39
SPT24P150	150Wp	72	1145 x 991 x 35	15.00	36	4.20	44	4.56	13.30
SPT12P150		36	1481 x 676 x 35	12.90	18	8.50	22	9.10	15.18
SPT24P140	140Wp	72	1145 x 991 x 35	15.00	36	3.92	44	4.26	12.41
SPT12P140		36	1481 x 676 x 35	12.90	18	7.78	22	8.52	14.17
SPT12P125	125Wp	36	1481 x 676 x 35	12.90	18	7.10	22	7.59	12.65
SPT12P120	120Wp	36	1481 x 676 x 35	12.90	18	6.87	22	7.30	12.14
SPT12P100	100Wp	36	1151 x 676 x 35	11.50	18	5.80	22	6.10	14.34
SPT12P074	74Wp	36	866 x 676 x 30	8.90	18	4.25	21.5	4.55	13.02
SPT12P065	65Wp	36	711 x 676 x 30	6.80	18	3.71	21.5	3.95	13.76
SPT12P060	60Wp	36	711 x 676 x 30	6.80	18	3.45	21.5	3.65	12.70
SPT12P050	50Wp	36	711 x 676 x 30	6.80	18	2.94	21.5	3.00	10.59
SPT12P045	45Wp	36	506 x 676 x 30	4.20	17.5	2.70	21.5	2.87	13.43
SPT12P040	40Wp	36	506 x 676 x 30	4.20	17.5	2.40	21.5	2.54	12.01
SPT12P037	37Wp	36	506 x 676 x 30	4.20	17.5	2.18	21.5	2.30	11.04
SPT12P024	24Wp	36	451 x 451 x 22	2.75	17.5	1.40	21.5	1.47	12.12
SPT12P020	20Wp	36	486 x 346 x 22	2.60	17.5	1.16	21.5	1.20	12.08
SPT12P018	18Wp	36	486 x 346 x 22	2.60	17.5	1.05	21.5	1.10	10.87
SPT12P012	12Wp	36	286 x 351 x 22	1.60	17.5	0.71	21.5	0.75	12.42
SPT12P010	10Wp	36	286 x 351 x 22	1.60	17.5	0.59	21.5	0.62	10.35
SPT12P005	5Wp	36	290 x 186 x 22	0.80	17.5	0.30	21.5	0.31	9.75

- Pmp*- Power output measured at Standard test condition with tolerance +/- 3%
- Vmp – Maximum voltage, Imp – Maximum Current, Voc – Open circuit Voltage, Isc – Short circuit current
- Warranty : 5 Years of Product warranty with 90% power output for 10 years & 80% power output up to end of 25 years of mentioned Pmp*.
- Size of Glass may vary depending upon availability.



QUALITY DESCRIPTION

- High Accuracy measurement at manufacturing end with range of PV Modules by Sukoon.
- ISO 9001:2008 Certified Company.
- Final Quality assessment of each order at manufacturing end by experienced quality person of Sukoon.
- A biodegradable packing that protect the product from edge to surface to prevent from any breakage.



SOLAR SMART STREET LIGHT & AC LED LIGHTS

Solar Smart Street Light made up of LED lamp for optimal illumination, Solar Panel to capture Sun Rays, a storage battery, lamp controller, pole etc. due to huge climate change affected by greenhouse gases now non-conventional energy source has been replaced by Solar Energy in form of Solar Light. Sukoon provide solar Smart Street light which operates automatically according to sun light. Sukoon has vast experience of Supply, install and commission of number of Solar Smart Street Light, due to additional features, for what Sukoon call it a Smart Light.

Sukoon Power Technology can also provide AC LED Lights which runs on AC power supply with or without Solar Energy.

Features:

- No monthly Tariff of Electricity.
- 25 Years of life with superior quality of photovoltaic module.
- Kind of clean energy accelerates development of human ecology residential district and reduce property management cost.
- No risk of line voltage or metering of power failure.
- High and long life performance due to IP 65 protected luminary.
- A high strength pole that can bear 5400 pa of wind pressure.
- Automatic operation with Dusk to down technology.
- Free from maintenance except Battery.

Features:

- MPPT base and IEC compliance controller with intensity of 110lm/watt of luminary that will run for long.
- High efficiency with 25 years of long life polycrystalline Solar PV modules.
- Over charge and under voltage protection of battery that is having low maintenance and long life with low discharge rate.
- Galvanized Pole following IS 2633/1972 standard.
- Excellent quality of battery that stick to normal lighting even in rainy days.

Solar Street Light Range

Type	LED					CFL		
Model	SPT0640SSSL	SPT0940SSSL	SPT1274SSSL	SPT1560SSSL	SPT1820SSSL	SPT0950SLC	SPT1174SLC	SPT2220SLC
Watt	6W	9W	12W	15W	18W	9W	11W	22W
Solar PV Module*	40Wp	40Wp	50Wp	60Wp	120Wp	50Wp	74Wp	120Wp
Battery*	45Ah	50Ah	65Ah	75Ah	100Ah	45Ah	75Ah	120Ah
Pole Height*	5 Meter	5 Meter	5 Meter	5 Meter	7 Meter	5 Meter	5 Meter	7 Meter
Power Output	7W	10W	12W	15W	20W	10W	12W	24W
Efficiency per watt	>=110 lm	>=110 lm	>=110 lm	>=110 lm	>=110 lm	>=60 lm	>=60 lm	>=60 lm
Life of Luminary (Hours)	60000	60000	60000	60000	60000	10000	10000	10000

*Vary according to design and requirement

WARRANTY

- 25 years of warranty of Solar Panel with power output 90% for 10 years & 80% power output up to end of 25 years.
- 2 year of Luminary Fixture warranty.
- 3 Years warranty for Battery, Warranty can be extended according to requirement

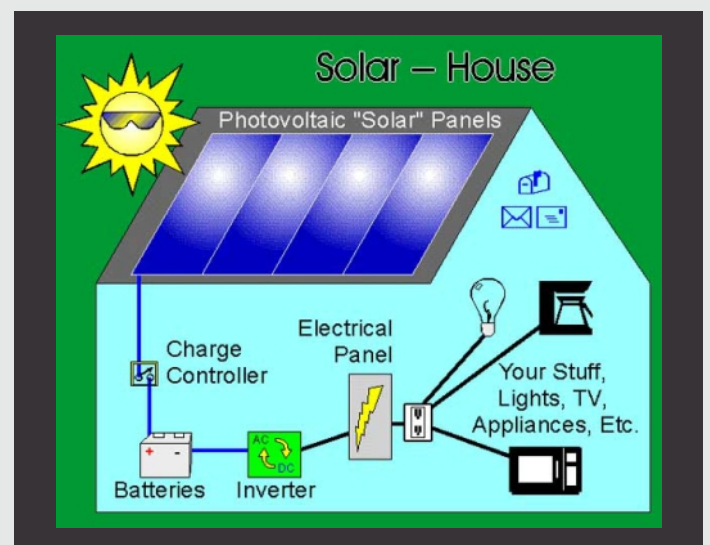
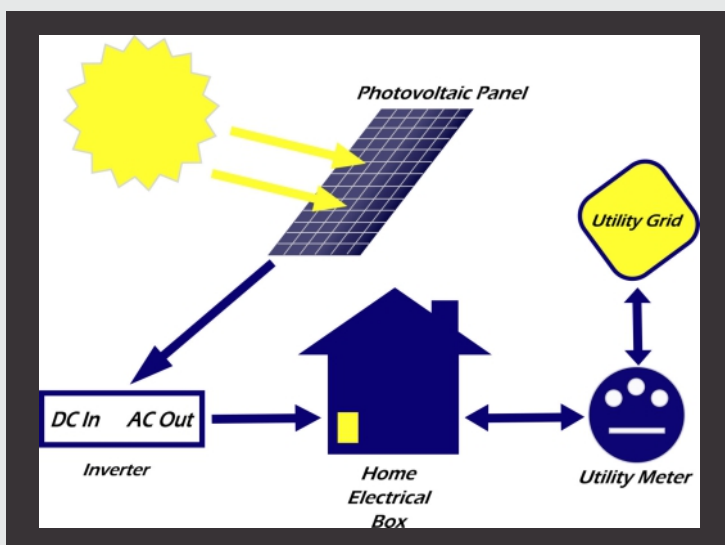


SOLAR SMART HOME SYSTEM

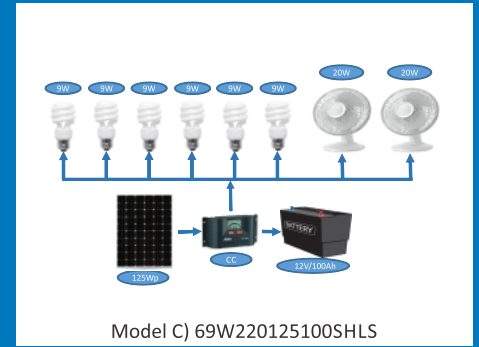
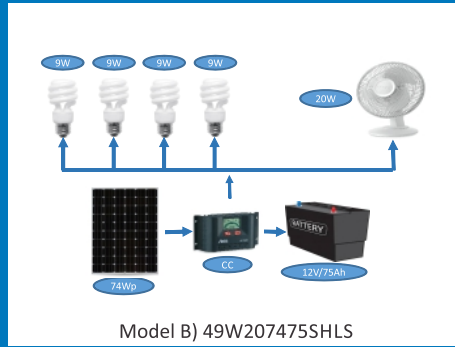
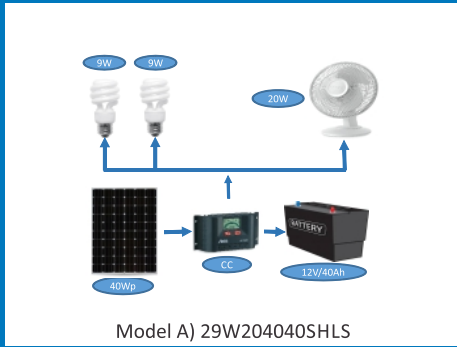
Almost more than 300 days a year Sun light is available especially in Asian countries, to utilize this huge amount of sun energy to every single door, Sukoon providing a smart system for home. This will not only provide power and brighten house but also saves money that usually paid for Tariff. Sukoon offering a technology to manage home power system in smart way, Sukoon has wide experience to supply, install and commission Solar home power plant and convert it into smart system by applying automation system where a user will be able to operate home electricity appliances by remote as well as by mobile application that also in affordable way.

Features & Benefits of Solar Smart Home Lighting System:

- No dependency on Grid which saves monthly Electricity Tariff.
- Huge 2 to 3 days of Autonomy (Power back up) with little maintenance after years.
- Relief from use of fuel which saves cost of approx. Rs. 10000 per year for generating 5 units (Kwh/day).
- Reduces local air pollution and offsets Green House Gases.
- Long lasting LEDs for increased life of 60000 Hours and superior comfort with easy installation and flexible design.
- It directly effects and improve the literacy level especially in urban areas.
- Reduce fire accidents.
- Extend the working hours and days in rural areas due to free electricity.
- Low battery & cut off indicators for smart battery management.
- Built in over load, short circuit, open circuit and reverse polarity protection.
- Low maintenance deep cycle batteries.
- Higher back up under cloudy weather.
- Superior efficiency of PV Module, Inverter, Charge Controller and batteries to run over long life.
- Mobile charger socket built in and Customized solution with extra load.
- Cost Payback period within 3 to 5 years.
- Additional features of Automation with remote operation where any authorize member can operate home lights from anywhere in the world by mobile app with extra efforts.



Solar Smart Home Lighting System Configuration:



Solar Smart Home Demand Load Range

Demand Load	480 W	745 W	1550 W	2400 W
Model	SPTSSH500	SPTSSH1K	SPTSSH2K	SPTSSH3K
Shadow free PV Module Mounting Area* (Sq. Meter)	5	10	20	28
Savings* (Rs./year)	6700	13500	26500	40000

Demand Load	3900 W	4750 W	5800 W	7700 W
Model	SPTSSH5K	SPTSSH6K	SPTSSH7.5K	SPTSSH10K
Shadow free PV Module Mounting Area* (Sq. Meter)	58	70	82	110
Savings* (Rs./year)	66500	80000	99500	133000

*Selection of area depending upon the site location.
* Savings calculated considering Tariff of Rs. 7/unit (Kwh)

WARRANTY

- 25 years of warranty of Solar Panel with power output 90% for 10 years & 80% power output up to end of 25 years.
- 2 year of Solar Inverter against any technical fault.
- 2 Years warranty for Battery for manufacturing fault.
- 1 year for Solar Charge Controller for manufacturing fault



Address: C111, Swagat Rainforest II, Ahmedabad - Gandhinagar Hwy, Kudasani, Gandhinagar-382421. Gujarat. IN
E mail: sales@sukoonpowertechnology.com, sukoonpowertech@gmail.com;
Mo: +91-9712946594, +91-9712946587