

**For a Free Quote:**

**Web: [EnergyPal.com/solar](http://EnergyPal.com/solar)**

**Call: 1-800-990-3725**

**Email: [contact@energypal.com](mailto:contact@energypal.com)**

# **EnergyPal**

## **Solar Panel Guide Specification Data Sheet**

**Wuhan Rixin Technology Co., Ltd.**

**RXJJ1-MBN200**

**RXJJ1-MBN200**

Also available on the web at  
[EnergyPal.com/wuhan-rixin-technology-co-ltd-solar-panels/rxjj1-mbn200](http://EnergyPal.com/wuhan-rixin-technology-co-ltd-solar-panels/rxjj1-mbn200)

# BIPV PV Components

## Thin Film Hollow Glass

### RXZK-ABS75-85



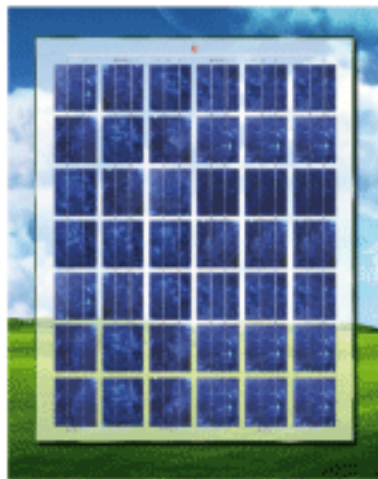
- Solar power generation, supply clean energy for buildings
- Higher strength, wind resistance, strike resistance, safer
- Intelligentized & humanized, regulating light, comfortable and convenient
- Provide a new aesthetics decoration effect for modern construction
- Completely according with national standard for building materials
- Sound insulation, heat insulation, resist outside environment intrusion effectively
- Integrating multiple functions, energy conservation and cost reduction

Model	RXZK-ABS75	RXZK-ABS80	RXZK-ABS85
<b>Mechanical parameters:</b>			
Front glass	5mm tempered glass		
Adhesive coating	0.76PVB single		
Back glass	5mm tempered glass		
Connecting manner	side		
Working temperature	-40~85℃		
<b>Constructing parameters:</b>			
Installation type:	hidden frame/exposed frame		
Module dimension	1336mm*1136mm		
Module thickness	22mm		
Installation height	285m		
Wind loads resistance	3.84KN/m <sup>2</sup>		
Module weight	54.6Kg		
<b>Electrical parameters:</b>			
Maximum power Pm	75Wp	80Wp	85Wp
Maximum power voltage Vmp	97V	99.2V	100.3V
Maximum power current Imp	0.78A	0.84A	0.88A
Short circuit current Isc	0.97A	1.05A	1.1A
Open circuit voltage Voc	131V	135V	136V
Maximum system voltage	1000V	1000V	1000V

# BIPV PV Components

## Polycrystalline Laminated Glass

### RXJJ1- MBN200



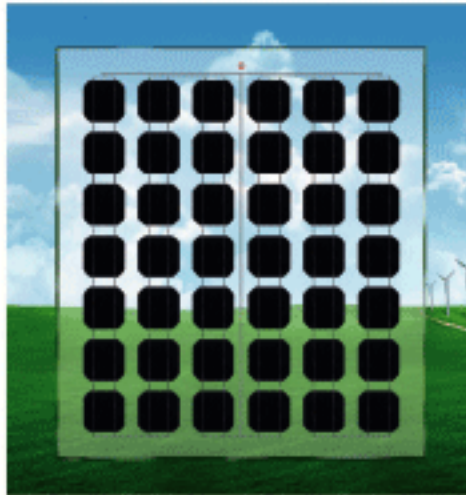
- Solar power generation, supply clean energy for buildings
- Completely according with national standard for building materials
- Higher strength, wind resistance, strike resistance, safer
- Sound insulation, heat insulation, effectively resist outside environment intrusion
- Intelligitized & humanized, regulating light, comfortable and convenient
- Provide a new aesthetics decoration effect for modern construction
- Integrating multiple functions, energy conservation and cost reduction

Product Name		Polycrystalline Laminated Glass
	<b>Model No.</b>	<b>RXJJ1- MBN200</b>
<b>Electrical parameters</b>	Maximum power Pm (Wp) *	200
	Power tolerance (%)	±5
	Maximum power voltage Vmp (V) *	24.78
	Maximum power current Imp (A) *	8.07
	Open circuit voltage Voc (V) *	30.48
	Short circuit current Isc (A) *	8.72
	Maximum system voltage (V)	1000
	Working temperature (°C)	-40~85°C
	Temperature coefficient of Pm Tk (Pm)	-0.31%/K
	Temperature coefficient of Voc Tk (Voc)	-0.41%/K
Temperature coefficient of Isc Tk (Isc)	+0.05%/K	
<b>Mechanical parameters</b>	Fault structure (mm)	5mm tempered glass + 0.76PVB + poly cells + 0.76PVB + 5mm tempered glass
	Cable	4mm <sup>2</sup> /900mm
	Product dimension	1500mm*1060mm*28mm
	Product weight	42kg
	Wind loads resistance	2.4KN/m <sup>2</sup>

# BIPV PV Components

## Monocrystalline Laminated Glass

### RXJJ1- DBN215



- High strength and strike resistance
- Suitable for most buildings, such as flat rooftop pitched rooftop, curtain wall, ceiling
- Have a better light transmittance effect
- Improve the indoor lighting greatly

Product Name		Monocrystalline Laminated Glass
	<b>Model No.</b>	<b>RXJJ1- DBN215</b>
<b>Electrical parameters</b>	Maximum power Pm (Wp) *	215
	Power tolerance (%)	±5
	Maximum power voltage Vmp (V) *	24.91
	Maximum power current Imp (A) *	8.63
	Open circuit voltage Voc (V) *	30.53
	Short circuit current Isc (A) *	9.31
	Maximum system voltage (V)	1000
	Working temperature (°C)	-40~85°C
	Temperature coefficient of Pm Tk (Pm)	-0.29%/K
	Temperature coefficient of Voc Tk (Voc)	-0.39%/K
Temperature coefficient of Isc Tk (Isc)	+0.05%/K	
<b>Mechanical parameters</b>	Fault structure (mm)	5mm tempered glass + 0.76PVB + mono cells + 0.76PVB + 5mm tempered glass
	Cable	4mm <sup>2</sup> /900mm
	Product dimension	1500mm*1060mm*28mm
	Product weight	42kg
	Wind loads resistance	2.4KN/m <sup>2</sup>