

For a Free Quote:

Web: EnergyPal.com/solar

Call: 1-800-990-3725

Email: contact@energypal.com

EnergyPal

Solar Panel Guide Specification Data Sheet

**Solair World International Pte Ltd
Poly-265W - 280W
SAWI275P**

Also available on the web at
EnergyPal.com/solair-world-international-pte-ltd-solar-panels/sawi275p

POLYCRYSTALLINE MODULE

SAWI265P(60) 265W
SAWI270P(60) 270W
SAWI275P(60) 275W
SAWI280P(60) 280W



High conversion efficiency
High module efficiency to guarantee power output.



0 to +5W positive tolerance
Detailed information in Electrical Specifications.



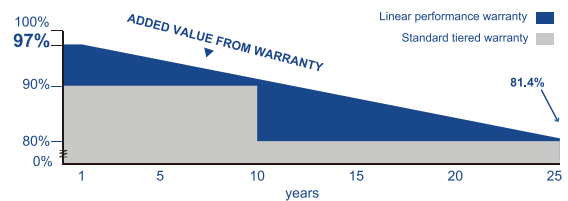
Self-cleaning glass
Coating glass for self-cleaning, reduce surface dust.



48-hour response service



Outstanding low irradiation performance
Excellent module efficiency even in the weak light conditions, such as morning or cloudy.



Excellent loading capability
2400Pa wind loads, 5400Pa snow loads.

25

25-year performance warranty

10

10-year warranty on materials and workmanship

ELECTRICAL DATA

Model Type	SAWI265P(60)	SAWI270P(60)	SAWI275P(60)	SAWI280P(60)
Peak Power (Pmax)	265W	270W	275W	280W
Module Efficiency	16.19%	16.60%	16.80%	17.11%
Maximum Power Voltage (Vmp)	31.4V	31.8V	32.0V	32.3V
Maximum Power Current (Imp)	8.44A	8.48A	8.61A	8.69A
Open Circuit Voltage (Voc)	38.6V	38.9V	39.1V	39.4V
Short Circuit Current (Isc)	9.03A	8.91A	9.15A	9.20A
Power Tolerance		0 to +5W		
Maximum System Voltage Nominal		1000V		
Operating Cell Temperature		44.4±2°C		
Maximum Series Fuse Rating		15A		

MECHANICAL DATA

Cell Type	156×156mm
Number of Cells	60 (10×6) 16.8kg
Weight	1650×991×35mm
Dimension	m 5400 Pascals
Max Load	IP67 rated MC4
Junction Box	Compatible PV
Connector	Wire
Wire Type	

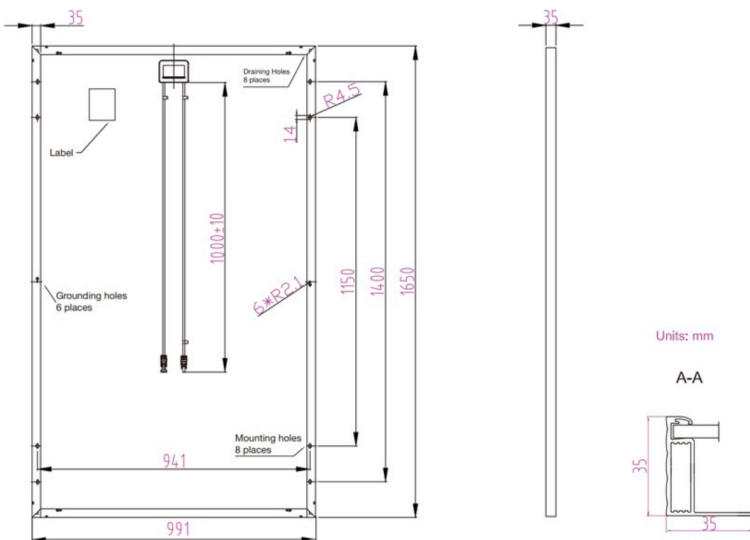
TEMPERATURE CHARACTERISTICS

Temp. Coeff. of Isc (TK Isc)	0.04% /°C
Temp. Coeff. of Voc (TK Voc)	-0.34% /°C
Temp. Coeff. of Pmax (TK Pmax)	-0.44% /°C

PACKING MANNER

Container	20' GP	40' GP
Pieces per Pallet	30	30
Pieces per Container	392	840

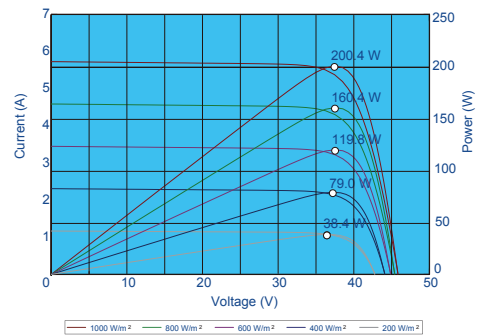
PHYSICAL CHARACTERISTICS



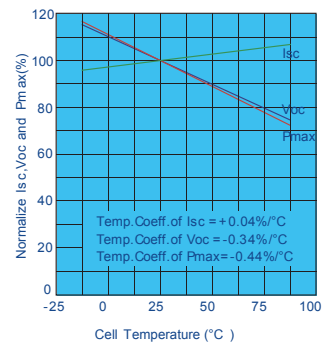
Note: the specifications are obtained under the Standard Test Conditions (STCs): 1000W/m² solar irradiance, 1.5 Air Mass, and cell temperature of 25°C. The NOCT is obtained under the Test Conditions: 800W/m², 20°C ambient temperature, 1m/s wind speed, AM 1.5 spectrum. Please contact support@jusolar.com for technical support. The actual transactions will be subject to the contracts. This parameters is for reference only and it is not a part of the contracts. The specifications are subject to change without prior notice.

ELECTRICAL CHARACTERISTICS

Current-Voltage & Power-Voltage Curve (AM1.5, Cell Temperature 25°C)



Temperature Dependence of Isc, Voc and Pmax



Irradiance Dependence of Isc, Voc and Pmax (Cell Temperature: 25°C)

