

For a Free Quote:

Web: **EnergyPal.com/solar**

Call: **1-800-990-3725**

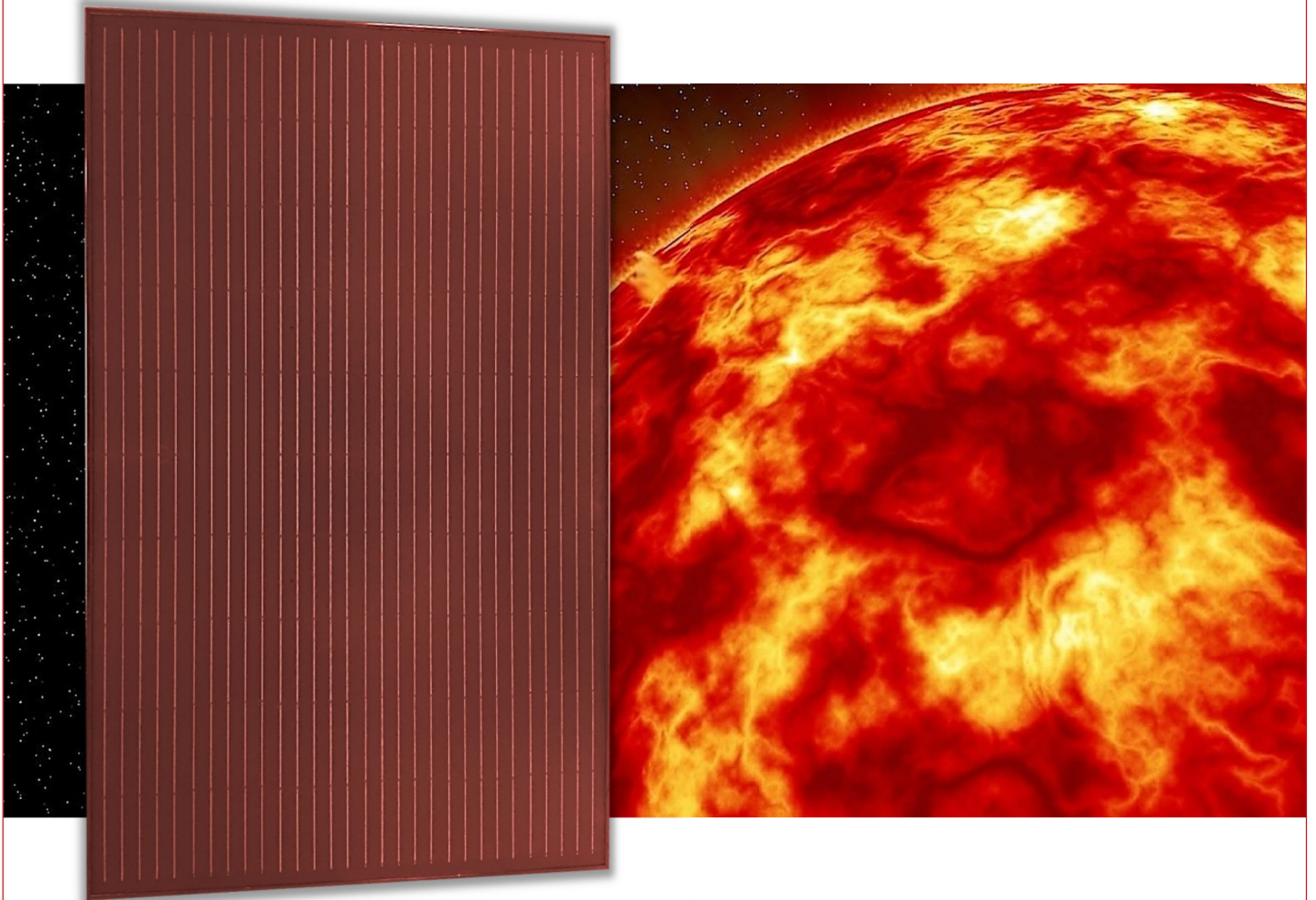
Email: **contact@energypal.com**

EnergyPal

Solar Panel Guide Specification Data Sheet

**Schlaefer S.r.l.
SCH M60 Color
SCH 250 M60**

Also available on the web at
EnergyPal.com/schlaefer-s-r-l-solar-panels/sch-250-m60



SCHLÄFER, THE VALUES YOU ARE LOOKING FOR

We have 60 years experience in the market. With our sales network, always working alongside professionals whom we have chosen for their advanced technology systems, we have made a positive difference to the lives of thousands of German families.

The name Schläfer is synonymous with quality, which is what our clients expect from us.

Our Solar photovoltaic panels reflect our Corporate values: quality, reliability and consistent performance over time.

We are very strict in our choice of suppliers which produce components for Schläfer Solar panels, plus we use the best production technologies available.

- Modern fully automated production line
- PV high performance module
- Highly transparent glass with anti-reflective coating
- Maximum stability during snow and wind - Aluminium frame soft grip
- IEC 61215, IEC 61730
- ISO 9001, ISO 14001, OHSAS 18001
- 12 years manufacturer's warranty on private roofs
- 25 years linear performance guarantee

PERFORMANCE UNDER STANDARD TEST CONDITIONS STC *

(1000 W/m² - AM 1,5 - 25°C)

		SCH 250 M60	SCH 255 M60	SCH 260 M60
NOMINAL OUTPUT P _{mpp} **	[W]	250,00	255,00	260,00
MODUL CONV. EFFICIENCY	[%]	15,32	15,63	15,94
NOMINAL VOLTAGE MPP	[V]	31,87	32,07	32,36
NOMINAL CURRENT MPP	[A]	7,96	8,00	8,07
OPEN CIRCUIT VOLTAGE	[V]	37,78	38,04	38,43
SHORT CIRCUIT CURRENT	[A]	8,40	8,44	8,50

PERFORMANCE AT NOCT (800 W/m² - AM 1,5 - 43°C)

		SCH 250	SCH 255	SCH 260
MAXIMUM PERFORMANCE	[W]	186,32	190,05	193,77
ELECTRICAL VOLTAGE MPP	[V]	24,47	24,62	24,84
ELECTRICITY MPP	[A]	5,58	5,61	5,66
VOLTAGE OF OPEN CIRCUIT	[V]	29,00	29,21	29,50
SHORT CIRCUIT	[A]	5,89	5,92	5,96

* The electrical parameters have a tolerance of +/- 3%.

** Tolerance range: -0 / +5Wp

CHARACTERISTICS

NOCT	[°C]	43,00 ± 2°C
CURRENT ISC	[%/°C]	0,043
VOLTAGE UOC	[%/°C]	-0,300
OUTPUT P _{MAX}	[%/°C]	-0,380

MECHANICAL DATA

SIZE L x H x P [mm]	1648 x 990 x 34 ± 2mm
WEIGHT [kg]	19,0
CELLS	60 cells – silicon monocrystalline
FRONTSIDE	Tempered glass 3,2mm
INCAPSULATING MATERIAL	EVA
UNDERSIDE	PPE black
FRAME	Anodized Aluminium
PLUGIN SYSTEM	IP65 with 3 bypass diodes
CONNECTOR	MC4 comparable

OPERATING CONDITIONS

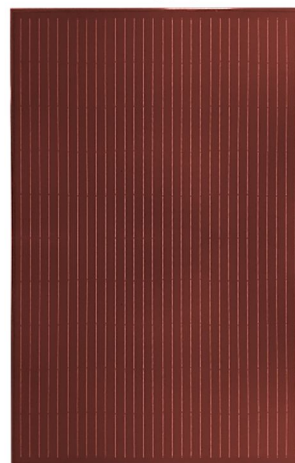
TEMPERATURE	-40 / +90°C
MAX.LOAD – CARRING CAPACITY	5.400Pa
MAXIMUM SYSTEM VOLTAGE	1.000V

CERTIFICATIONS AND GUARANTEES

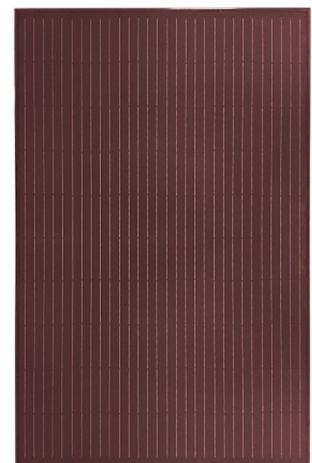
CERTIFICATIONS	IEC 61215, IEC 61730, UNI9177 CLASSE 1 ISO 9001 / ISO 14001 / OHSAS 18001
GUARANTEES ***	12 years manufacturers warranty 25 years linear performance guarantee

*** See the warranty sheet for more details

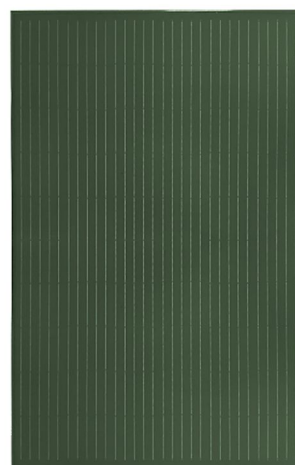
RAL 8015



RAL 8016



RAL 6007



RAL 7021

