

For a Free Quote:

Web: EnergyPal.com/solar

Call: 1-800-990-3725

Email: contact@energypal.com

EnergyPal

Solar Panel Guide Specification Data Sheet

Changzhou Almaden Co., Ltd.

SEAP40

SEAP40-160

Also available on the web at
EnergyPal.com/changzhou-almaden-co-ltd-solar-panels/seap40-160

2mm+2mm

Thickness

19 kg

Weight

10.4%

Max efficiency

40 cells

Polycrystalline

40%

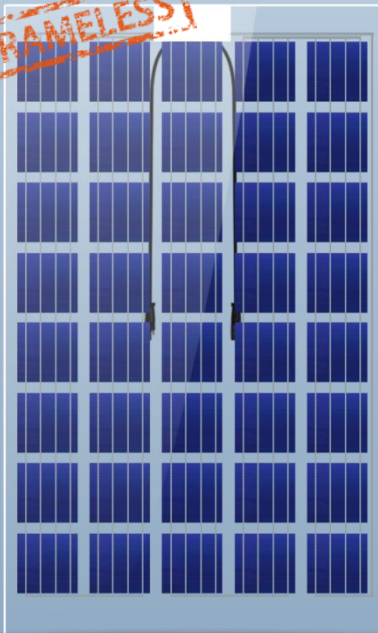
Transparency

155-170W

Power Output

SEAP40

FRAMELESS



PTEROSAUR®

DUAL GLASS MODULE



Aesthetic view

The see-through design delivers unique aesthetic sense. It's the ideal option as sunlight roofs, corridors, patios and canopies for greenhouses, home and resorts.



Super Weather Resistance

Absolute water-proof, Anti-corrosion by acid, alkaline and ammonia, Anti-friction. Better thermal dissipation. 30+ years without worry.



PID Free

Potential induced degradation (PID) free guaranteed.



Micro-Crack Free

No micro-cracks under harsh transportation, complicated handling and installation conditions, and during lifetime module operation.



Fire Class A

Glass-glass design helps to save module from damages caused by arc and hot spots, eliminating potential dangers of fire.



Extended warranty

- 10 years product warranty on workmanship & materials.
- 30 years linear power output warranty.



Cleaning with ease

Frameless design, no dust trapped on the edge.

ELECTRICAL SPECIFICATION (STC)

Module	SEAP40-155	SEAP40-160	SEAP40-165	SEAP40-170
Rated Power (P _{mpp})	155W	160W	165W	170W
Rated Current (I _{mpp})	7.57A	7.77A	8.00A	8.25A
Rated Voltage (V _{mpp})	20.52V	20.58V	20.62V	20.67V
Short Circuit Current (I _{sc})	8.10A	8.31A	8.56A	8.83A
Open Circuit Voltage (V _{oc})	25.49V	25.56V	25.61V	25.67V

MECHANICAL SPECIFICATION

Cell Type	Poly-crystalline
Cell Dimension	156mm × 156mm
Module Dimension	1662mm × 990mm × 5mm (J-box not included)
Weight	19kg
Front Glass	2mm tempered AR glass
Back Glass	2mm tempered glass

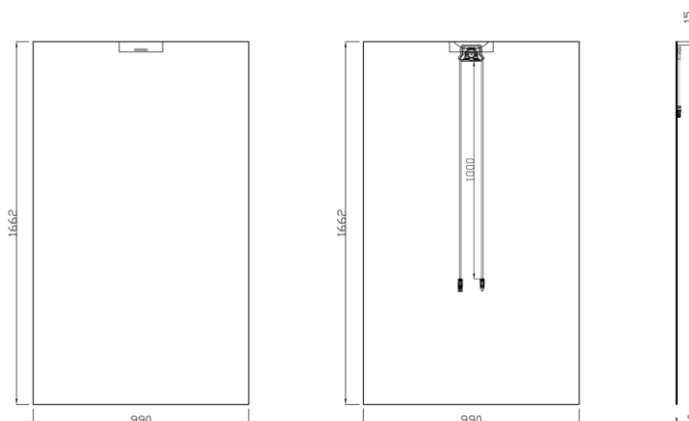
TEMPERATURE COEFFICIENT

Nominal Operating Cell Temperature	NOCT	°C	46±2
Temperature Coefficient of I _{sc}	α	%/°C	+0.056
Temperature Coefficient of V _{oc}	β	%/°C	-0.353
Temperature Coefficient of P _{mpp}	γ	%/°C	-0.485

LIMITS

Operational Temperature	°C	-40~+85
Maximum Static Load	Pa	5400
Maximum Wind Load	Pa	2400
Maximum System Voltage	V(DC)	IEC:1000 UL:600
Maximum Series Fuse Rating	A	15

DIMENSION(mm)



AMD-EN-APP-16.5

Packaging Configuration

Modules per box: 38 pieces
 Modules per 40' container: 988 pieces