

For a Free Quote:

Web: EnergyPal.com/solar

Call: 1-800-990-3725

Email: contact@energypal.com

EnergyPal

Solar Panel Guide Specification Data Sheet

**Solex Energy Ltd.
25W-100W 36 Cells Poly
SES12100**

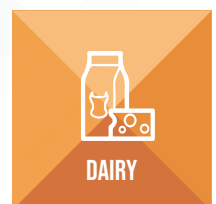
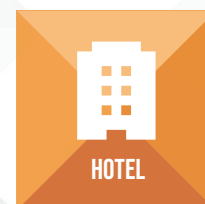
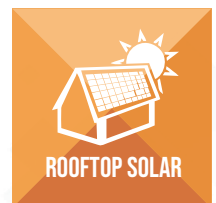
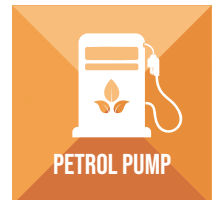
Also available on the web at
EnergyPal.com/solex-energy-ltd-solar-panels/ses12100

20-160W 36 CELLS POLY

Electrical Characteristics STC*						
Model	Pmax(W)	Vmp(V)	Imp(A)	Voc(V)	Isc(A)	Dimension(mm)
SES1220	20W	18.33	1.2	22.00	1.35	545 x 360 x 22
SES1225	25W	18.33	1.37	22.00	1.46	630 x 360 x 22
SES1230	30W	18.33	1.64	22.39	1.75	550 x 515 x 22
SES1237	37W	18.40	2.01	22.43	2.15	550 x 515 x 22
SES1240	40W	18.40	2.20	22.43	2.35	675 x 485 x 22
SES1250	50W	18.44	2.77	22.46	2.94	785 x 515 x 30
SES1260	60W	18.44	3.00	22.46	3.53	965 x 515 x 30
SES1270	70W	18.55	3.80	22.54	4.07	965 x 515 x 30
SES1274	74W	18.55	4.04	22.54	4.33	1080 x 515 x 30
SES1275	75W	18.55	4.10	22.54	4.38	1080 x 515 x 30
SES1280	80W	18.72	4.28	22.68	4.58	1200 x 515 x 30
SES12100	100W	18.72	5.35	22.68	5.72	1065 x 675 x 30
SES12120	120W	18.72	6.47	22.68	6.92	1255 x 675 x 30
SES12150	150W	18.75	8.10	22.70	8.68	1482 x 675 x 30
SES12160	160W	19.26	8.22	23.33	8.83	1482 x 675 x 30

*Standard Test Conditions: Irradiance: 1000 W / m² • Cell temperature: 25°C • with cleaned modules

APPLICATION



Temperature Characteristics	
Nominal Operating Cell Temperature	45±2°C
Temperature Coefficient of Pmax	-0.42%/°C
Temperature Coefficient of Voc	-0.30%/°C
Temperature Coefficient of Isc	0.06%/°C

Maximum Ratings	
Operating Temperature range	-45°C ~+85°C
Maximum system Voltage	600V
Max series fuse rating	10A
Max front load (e.g.: snow)	5400Pa
Max back load (e.g.: wind)	2400Pa

SALIENT FEATURE OF OUR SOLAR PANELS

- ◆ Wide Range from 20 Watt to 340 Watt
- ◆ Poly-crystalline Solar Cells used
- ◆ 12v, 24v ratings are available
- ◆ High efficiency, resulting in high power output
- ◆ High Impact resistant toughened glass used
- ◆ Custom design also undertaken

OUR PRODUCT

SOLAR PV MODULES

Our SPV modules from 20Wp modules to 340Wp modules, We currently maintain an active inventory of 20Wp, 40Wp, 50Wp, 80Wp, 100Wp, 250Wp, 300Wp, 320Wp, 325Wp SPV modules as per MNRE Specification.

SOLAR EPC

Our Goal is to install commercial and utility scale photovoltaic systems which perform to the highest standards and at maximum output.

SOLAR ROOF TOP SYSTEMS

Our quality products withstand the toughest environmental conditions to provide the perfect solution for electricity generation. Solex PV Modules are made of highly efficient mono and poly crystalline solar cells which are resistant to rain, water, abrasion and hail impact.

SOLAR STREET LIGHTING

Solar street lights are powered by photovoltaic panels generally mounted on the lighting structure or integrated in the pole itself. The photovoltaic panels charge a battery, which powers LED lamps during the night. Street lights come with dusk to dawn sensors, which automatically turn the light on in the evening and off in the morning and charging during the day.

SOLAR WATER PUMPING SYSTEMS

Solar Water Pumping system is a water lifting system powered by electricity generated by solar panels. There are two types of solar water pumps, one is submersible solar pump and another is surface solar pump. Both pumps are available in DC and AC.

SOLAR WATER HEATING SYSTEMS

Highly efficient water heating systems are being developed by our research team to provide hot water throughout the year.




SOLAR POWERED PETROL STATIONS

Most petrol pumps require to be run on a 24x7 basis thereby requiring an intelligent solar power management system. Alternate power sources like diesel generators have a higher switchover time and the dispenser pump shuts down almost instantly. Power fluctuations also end up damaging dispensing units at petrol pumps. Sudden power failure leads to loss of fuel, time and money of both the customer and the petrol pump owner.

REG.OFFICE & WORKS SOLEX ENERGY LIMITED

PLOT NO -131 - A, PHASE - 1, NR.KRIMY BISCUIT, GIDC,
VITHAL UDYOGNAGAR-388121, ANAND, GUJARAT, INDIA.

 sales@solex.in | solexin14@gmail.com

 +91 269 2230317  +912692231216  www.solex.in
+91 93772 21443