

**For a Free Quote:**

**Web: [EnergyPal.com/solar](http://EnergyPal.com/solar)**

**Call: 1-800-990-3725**

**Email: [contact@energypal.com](mailto:contact@energypal.com)**

# **EnergyPal**

## **Solar Panel Guide Specification Data Sheet**

**Wuxi Sunket New Energy Technology Co., Ltd.**

**SKT140-155P-12**

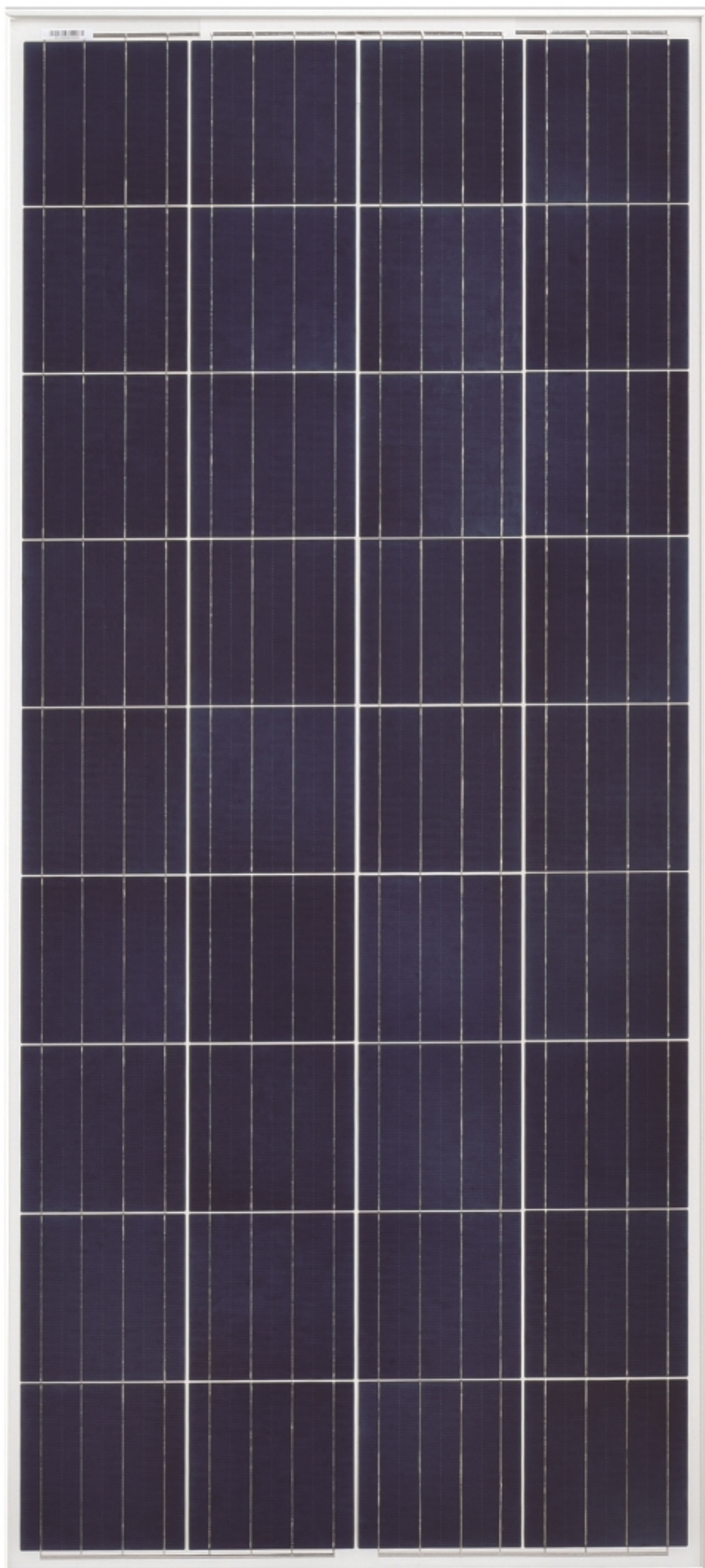
**SKT140P-12**

Also available on the web at

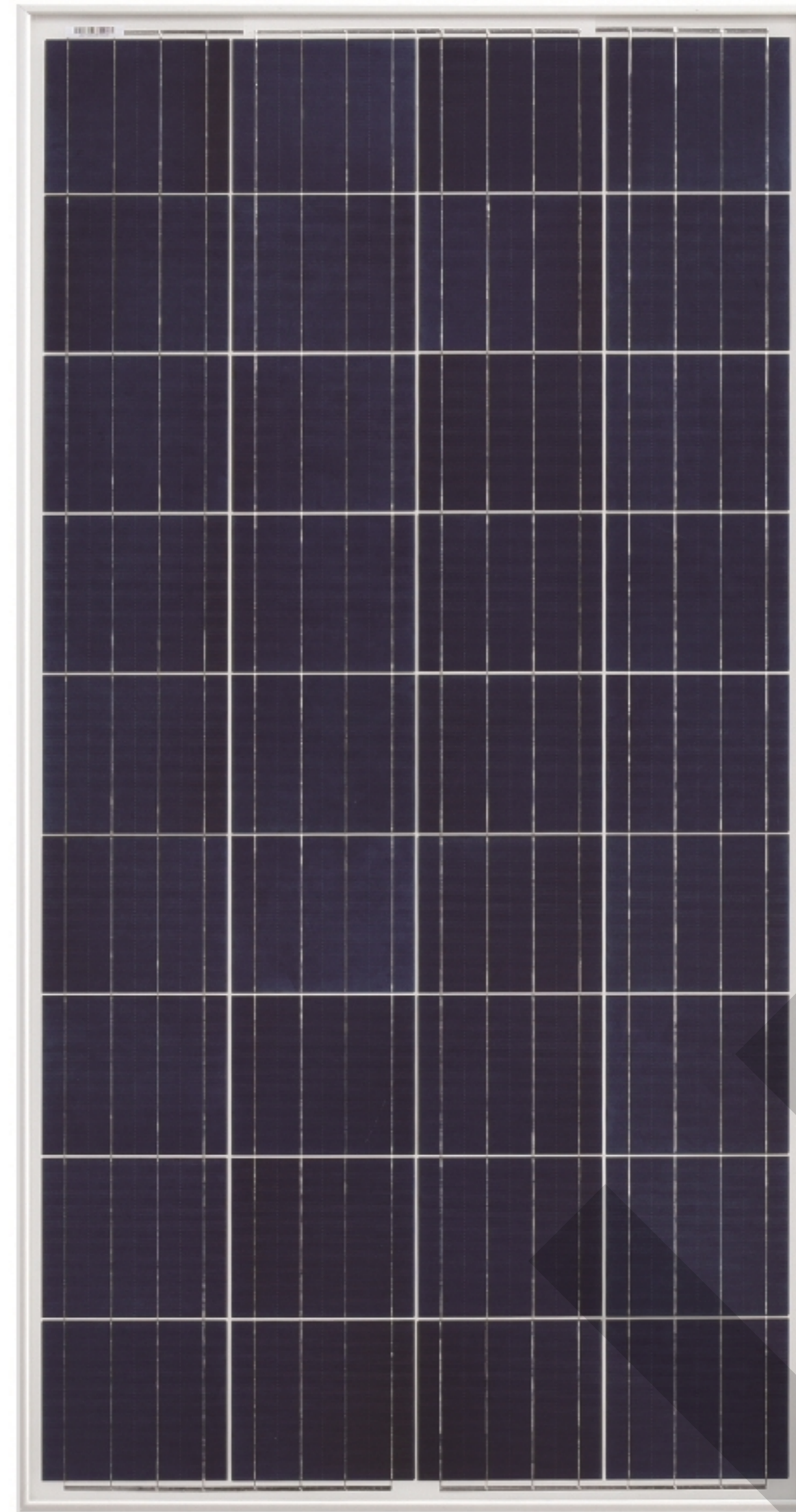
[EnergyPal.com/wuxi-sunket-new-energy-technology-co-ltd-solar-panels/skt140p-12](http://EnergyPal.com/wuxi-sunket-new-energy-technology-co-ltd-solar-panels/skt140p-12)



# 120~155 Watt



140W~155W



120W~135W



\*BLACK FRAME/BLACK BACK-SHEET PRODUCTS ARE AVAILABLE UPON REQUEST

## MANAGEMENT SYSTEM



ISO 9001: Quality management system



ISO 14001: Standard for environmental management system



OHSAS 18001: International standard for occupational health and safety assessment system

## PRODUCT CERTIFICATES



IEC 61215  
IEC 61730  
Periodical Inspection

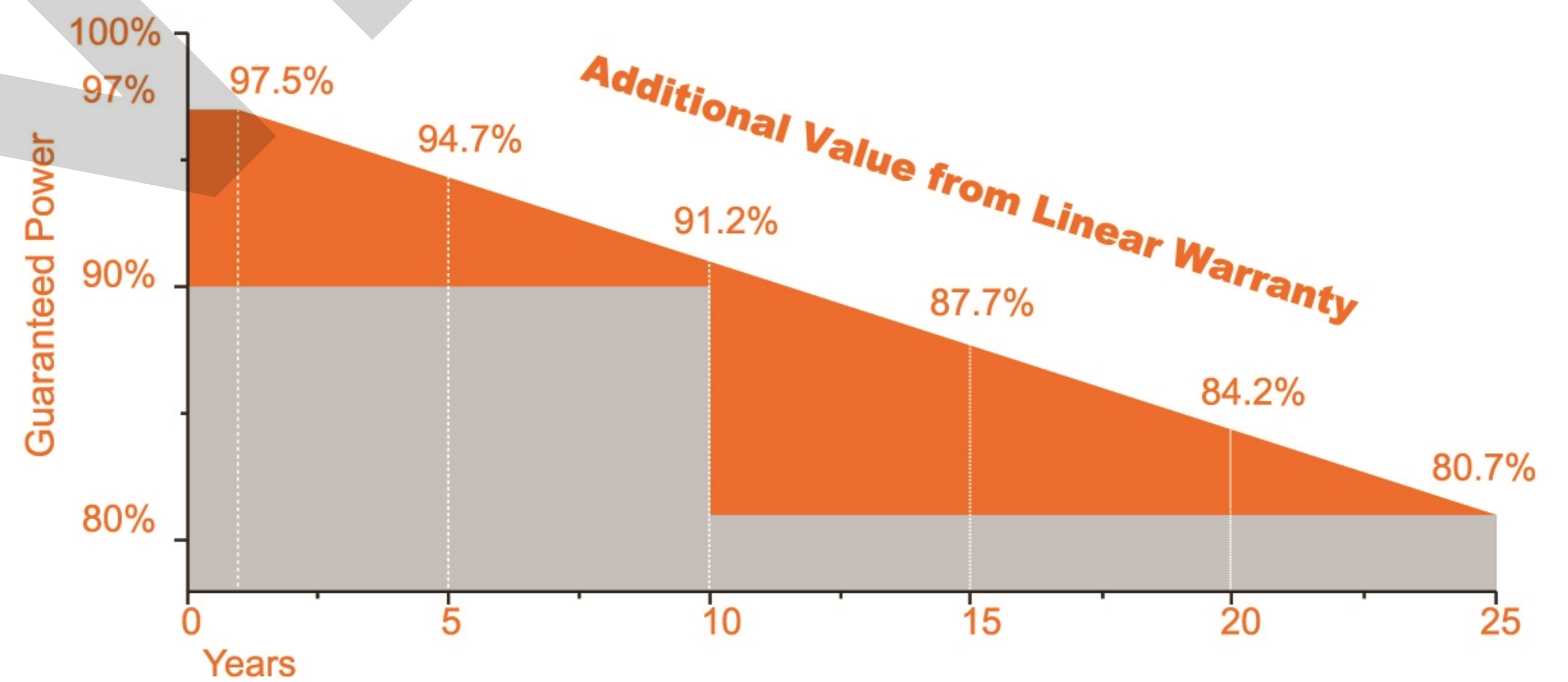


## WARRANTY

**10** Years  
Material & Craft  
Quality  
assurance

**10** Years  
90% Output  
Power  
guarantee

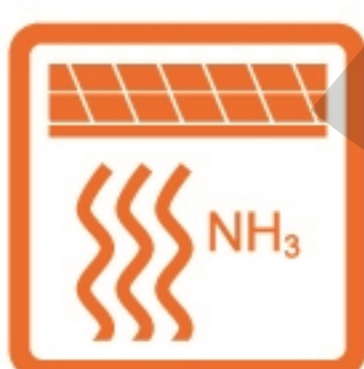
**25** Years  
80% Output  
Power  
guarantee



## Safety



Safety for salt mist corrosion  
(IEC61701, tested in TUV)



Safety for ammonia corrosion  
(IEC62716, tested in TUV)



Safety for fire risk  
(Class A, tested in TUV)

## Key



High stability of the aluminium  
frame



High quality junction box and  
connector systems



100% inspection, to guarantee  
the reliability of solar systems

## Technology



Using high efficiency poly  
solar cells



Excellent performance in  
low-light environments



High transmissivity, low-iron  
tempered glass.



### Electrical Characteristics (STC)

| Module Type                     | SKT120P-12 | SKT125P-12 | SKT130P-12 | SKT135P-12 |
|---------------------------------|------------|------------|------------|------------|
| Maximum Power- Pmax(W)          | 120        | 125        | 130        | 135        |
| Open Circuit Voltage - Voc(V)   | 22.2       | 22.2       | 22.4       | 22.6       |
| Short- Circuit Current - Isc(A) | 7.12       | 7.42       | 7.63       | 7.84       |
| Voltage at Pmax -Vmp(V)         | 18.2       | 18.2       | 18.4       | 18.6       |
| Current at Pmax - Imp(A)        | 6.59       | 6.87       | 7.07       | 7.26       |
| Module Efficiency -ηm (%)       | 14.02      | 14.60      | 15.19      | 15.77      |

| Module Type                     | SKT140P-12 | SKT145P-12 | SKT150P-12 | SKT155P-12 |
|---------------------------------|------------|------------|------------|------------|
| Maximum Power- Pmax(W)          | 140        | 145        | 150        | 155        |
| Open Circuit Voltage - Voc(V)   | 22.2       | 22.3       | 22.4       | 22.5       |
| Short- Circuit Current - Isc(A) | 8.31       | 8.56       | 8.80       | 9.05       |
| Voltage at Pmax -Vmp(V)         | 18.2       | 18.3       | 18.4       | 18.5       |
| Current at Pmax - Imp(A)        | 7.69       | 7.92       | 8.15       | 8.38       |
| Module Efficiency -ηm (%)       | 14.09      | 14.60      | 15.10      | 15.60      |

STC: Irradiance 1000W/m<sup>2</sup>, Cell Temperature 25 °C, Air Mass 1.5

|                                |              |
|--------------------------------|--------------|
| Power Tolerance(W)             | (0,+4.99)    |
| Maximum System Voltage(V)      | 715          |
| Maximum Series Fuse Rating (A) | 20           |
| Operating Temperature          | -40 ~ +85 °C |

### Temperature Characteristics

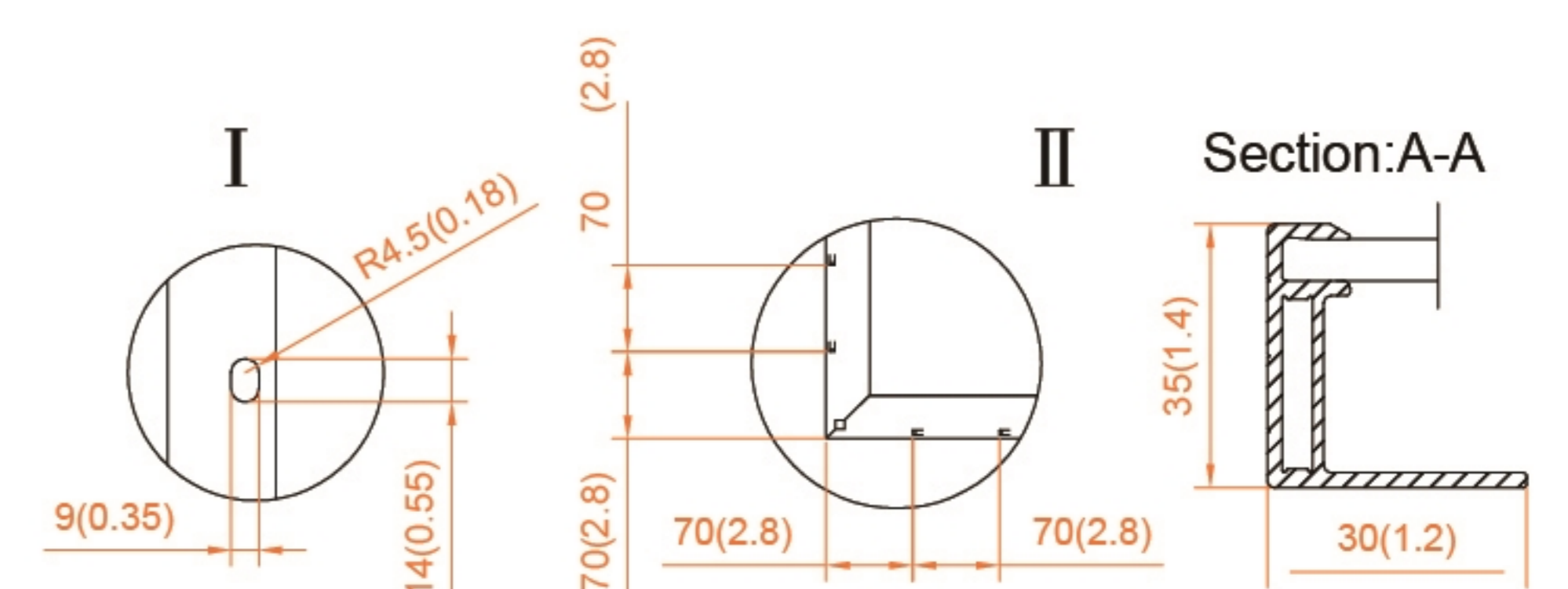
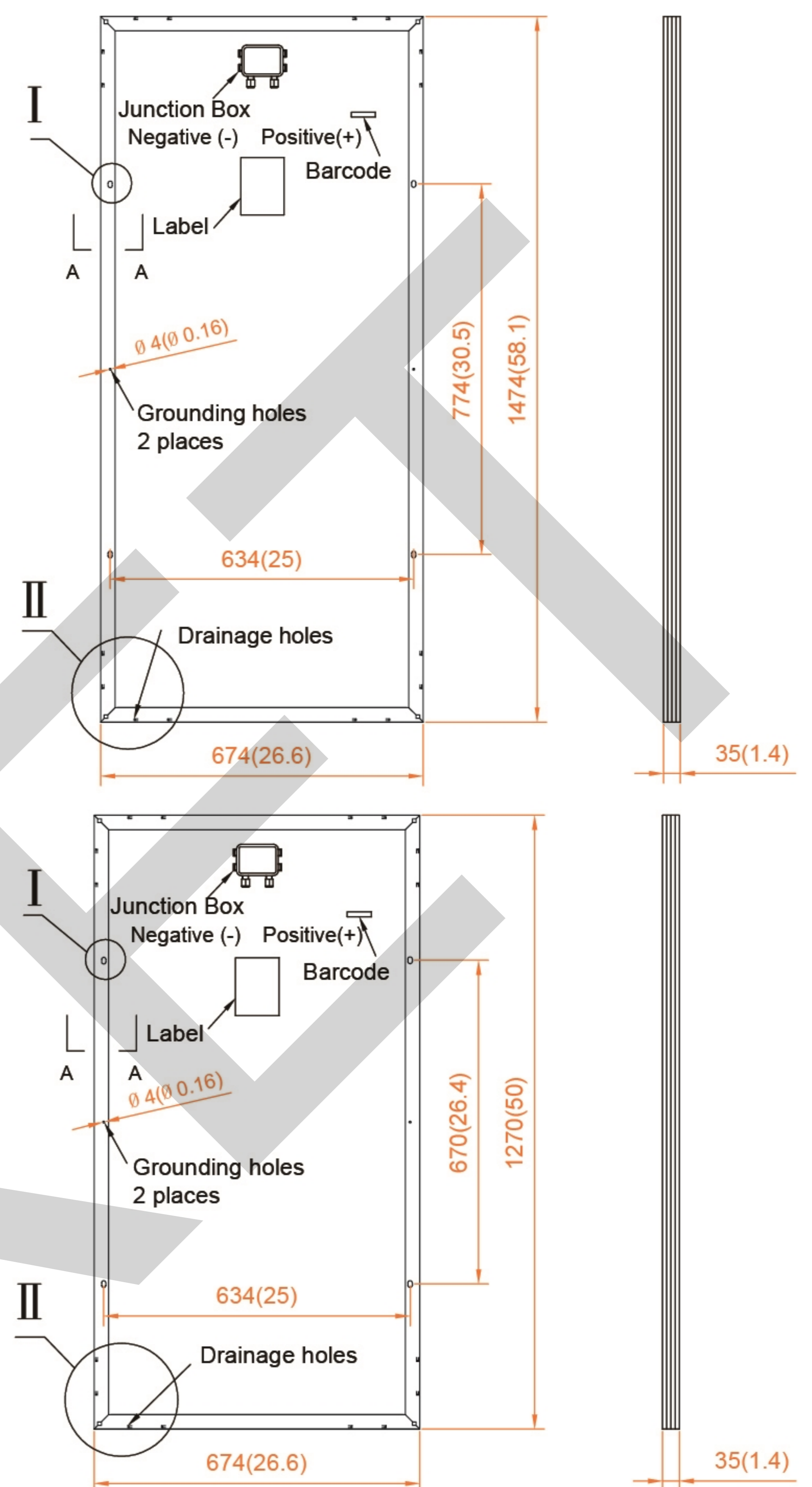
|  |              |
|--|--------------|
| Pmax Temperature Coefficient             | -0.40%/°C    |
| Voc Temperature Coefficient              | -0.32%/°C    |
| Isc Temperature Coefficient              | +0.05%/°C    |
| Operating Temperature                    | -40 ~ +85 °C |
| Nominal Operating Cell Temperature(NOCT) | 45±2 °C      |

### Mechanical Specifications

| Module Type         | SKT140P~155P-12                 | SKT120P~135P-12                 |
|---------------------|---------------------------------|---------------------------------|
| External Dimensions | 1474×674×35mm                   | 1270×674×35 mm                  |
| Weight              | 11kg                            | 9.5 kg                          |
| Poly Solar Cells    | 156×156mm (36pcs)               | 133.25×156mm (36pcs)            |
| Front Glass         | 3.2 mm tempered glass, low iron | 3.2 mm tempered glass, low iron |
| Frame               | Anodized aluminum alloy         | Anodized aluminum alloy         |
| Junction Box        | IP67                            | IP67                            |
| Mechanical Load     | 5400 Pa                         | 5400 Pa                         |

### Packing Configuration

| Module Type       | SKT140P~155P-12 | SKT120P~135P-12 |
|-------------------|-----------------|-----------------|
| Carton Dimensions | 1515×1110×689mm | 1310×1110×689mm |
| Pallet Dimensions | 1525×1120×830mm | 1320×1120×830mm |
| Pallet Weight     | 380kg           | 335kg           |
| Pieces per Pallet | 30(5pcs/carton) | 30(5pcs/carton) |

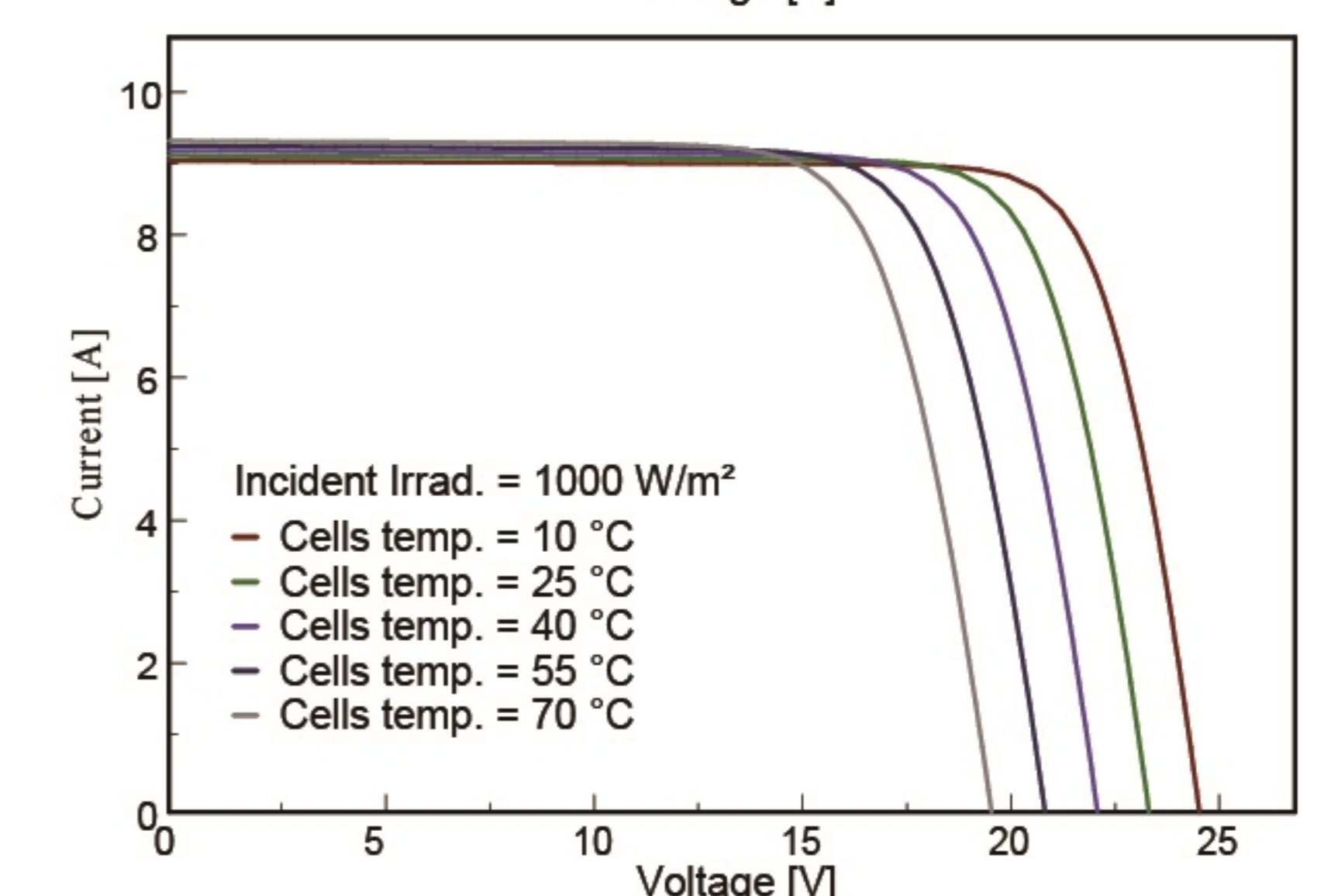
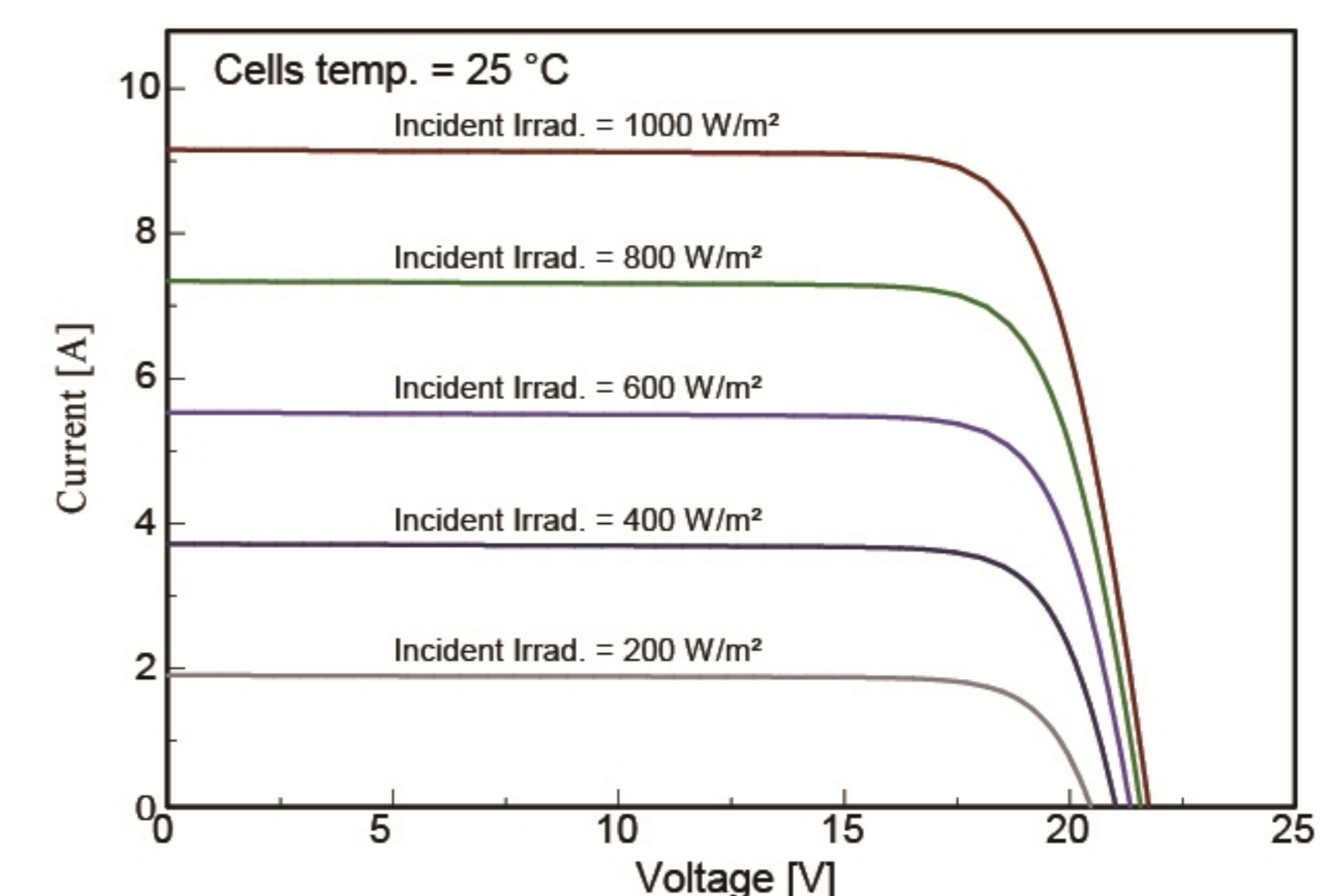


All Dimensions in mm(inch)

The above drawing is a graphical representation of the product.

For engineering quality drawings please contact SUNKET.

### I-V Curve (SKT155P-12)



Specifications are subject to change without further notification SKT-EN-2017V1.0 © Copyright 2017 Sunket