

**For a Free Quote:**

Web: **EnergyPal.com/solar**

Call: **1-800-990-3725**

Email: **contact@energypal.com**

# **EnergyPal**

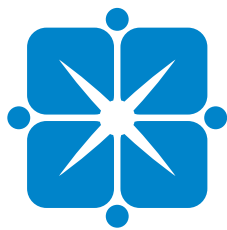
## **Solar Panel Guide Specification Data Sheet**

**Solar Leading Group Limited**

**SL6P36-90W-110W**

**SL6P36-95W**

Also available on the web at  
[EnergyPal.com/solar-leading-group-limited-solar-panels/sl6p36-95w](http://EnergyPal.com/solar-leading-group-limited-solar-panels/sl6p36-95w)

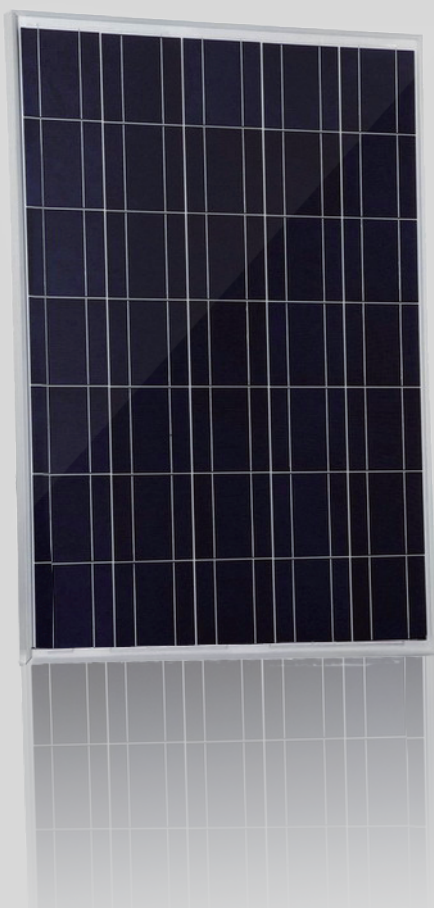


# SOLAR LEADING

To a better future

## SL6P36-90W-110W

Polycrystalline Photovoltaic Module



**11.82-14.44%**  
MAXIMUM EFFICIENCY

**90-110W**  
POWER OUTPUT RANGE

**36 CELL**  
POLYCRYSTALLINE MODULE

**0~+5W**  
POSITIVE OUTPUT GUARANTEE



**Excellent low light performance on cloudy days, mornings and evenings**

- Anti-reflective coating



**Great aesthetics for residential applications**

- High efficiency, lower weight, Easy handling and optimum utilization of roof space



**Certified to withstand challenging environmental conditions**

- 2400 Pa wind load
- 5400 Pa snow load
- 35mm hail stone at 97 km/hr



**IP68 connectors enhance the reliability of the PV system**



**Blowing sand resistance certification**



Anti-PID



Fire test certification



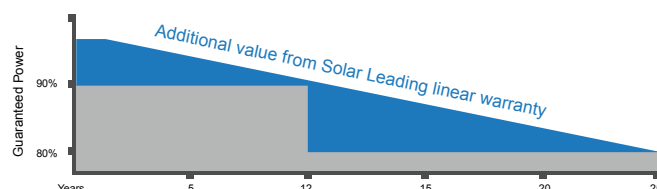
Ammonia corrosion certification



Salt mist corrosion certification

**LINEAR PERFORMANCE WARRANTY**

12 Year Product Warranty 25 Year Linear Power Warranty



Industry standard

Solar Leading

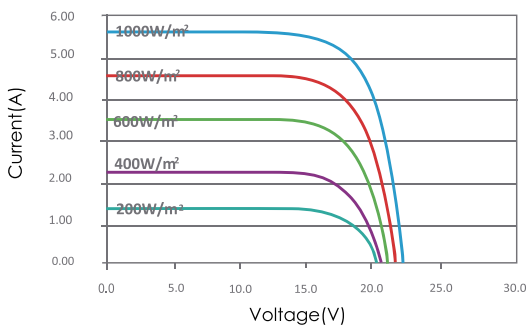
### Electrical Characteristics

Characteristics	Unit	SL6P36-90W	SL6P36-95W	SL6P36-100W	SL6P36-105W	SL6P36-110W
Maximum Power (Pmax)	W	90	95	100	105	110
Power Tolerance	W	(0, +5)	(0, +5)	(0, +5)	(0, +5)	(0, +5)
Maximum Power Voltage (Vmp)	V	18.0	18.0	18.0	18.0	18.0
Maximum Power Current (Imp)	A	5.00	5.33	5.56	6.32	6.67
Open Circuit Voltage (Voc)	V	22.46	21.60	21.60	21.60	21.60
Short Circuit Current (Isc)	A	5.38	6.01	6.01	6.75	7.34
Module Efficiency (ηm)	%	11.80	12.47	13.13	13.79	14.44
Dimension of module	mm	1120×680×35mm (44.0×26.7×1.4inch)				
Pmax Temperature Coefficient	%/C	-0.48				
Voc Temperature Coefficient	%/C	-0.35				
Isc Temperature Coefficient	%/C	+0.04				
Maximum System Voltage	VDC	1000(TUV);600(UL)				
Maximum Series Fuse Rating	A	15				
Operating Temperature	℃	-40 ~ +85				
<b>NOCT</b>	℃	45±2				

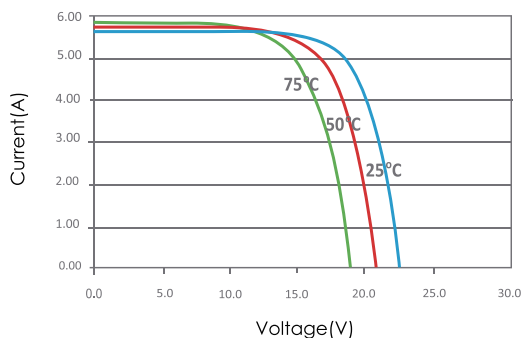
STC:1000W/m2. AM1.5 and 25 °C cell temperature: NOCT : Nominal Operating Cell Temperature

### I-V Curves

I-V Curves of PV Module SL6P36-90W (Cell Temp. 25 °C)

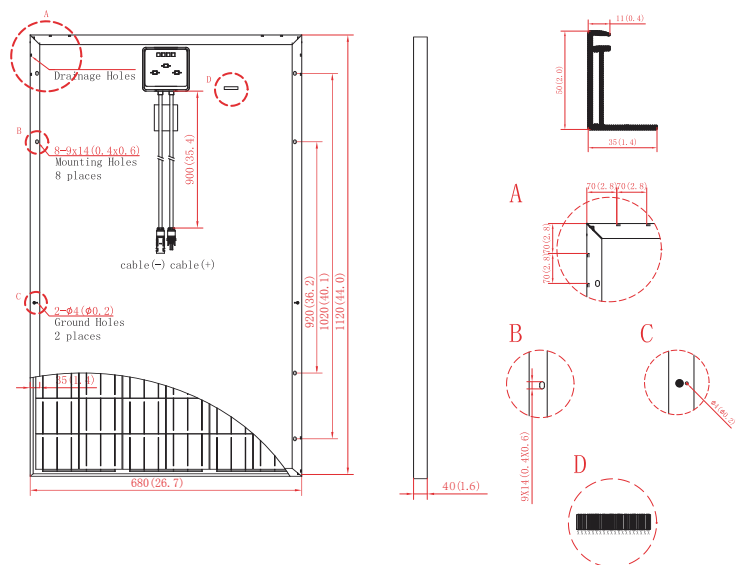


I-V Curves of PV Module SL6P36-90W at Different Cell Temp. (AM1.5, 1000W/m²)



### Physical Characteristics

Unit:mm(inch)



Cell Type	156 mm x 156 mm, Polycrystalline Silicon
No. of Cells	36pcs (6 x 6)
Dimension	1120x680x35mm (44.0x26.7x1.4inch)
Weight	8.0kg (17.6lbs.)
Cable Length	900mm (35.4inch)
Bypass Diodes	6/6pcs
Junction Box	IP65/IP68
Front Glass	3.2mm (0.1inch) tempered low-iron glass
Frame	Anodized aluminum alloy

\* Specifications are subjected to change without further notice

