

For a Free Quote:

Web: EnergyPal.com/solar

Call: 1-800-990-3725

Email: contact@energypal.com

EnergyPal

Solar Panel Guide Specification Data Sheet

SpolarPV Technology Co., Ltd.

SPP6-72 325-345

SP325P6-72

Also available on the web at
EnergyPal.com/spolarpv-technology-co-ltd-solar-panels/sp325p6-72

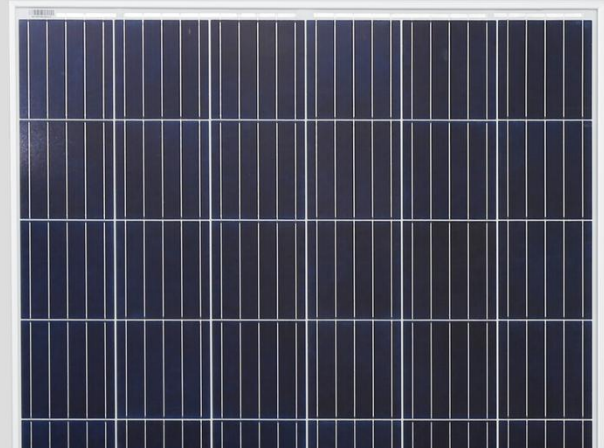
SPP6-72

320-340 Watt

POLY CRYSTALLINE MODULE

Positive power tolerance of 0~+3%

ISO9001:2016 ISO14001:2016
OHSAS18001:2011 certified factory.
IEC61215 IEC61730 certified products.



KEY FEATURES



High Efficiency:

Higher module conversion efficiency (up to 17.52%) benefit from Passivated Emmitter Rear Contact (PERC) technology.



PID RESISTANT:

Excellent Anti-PID performance guarantee limited power degradation for mass production.



Low-light Performance:

Advanced glass and cell surface texture design ensure excellent performance in low-light environment.



Severe Weather Resilience:

Certified to withstand: wind load (2400 Pascal) and snow load (5400 Pascal).

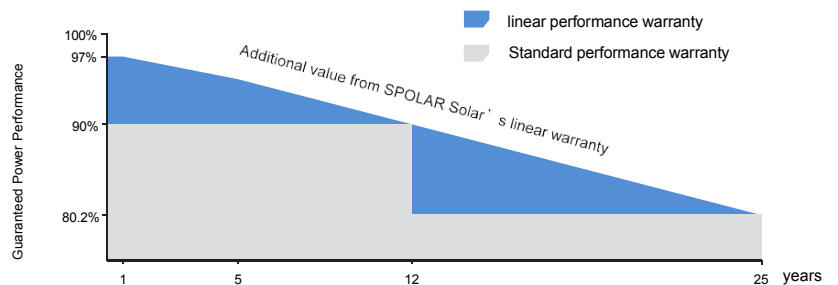


Durability against extreme environmental conditions:

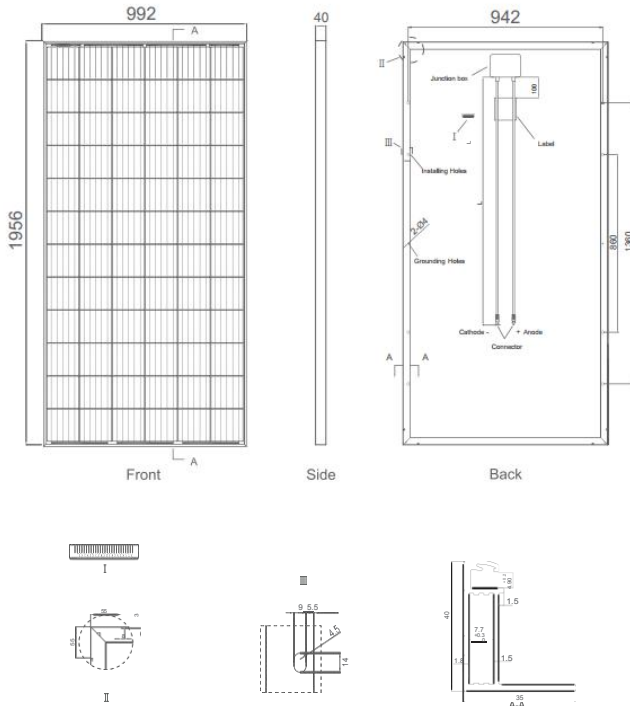
High salt mist and ammonia resistance certified.

LINEAR PERFORMANCE WARRANTY

12 Year Product Warranty • 25 Year Linear Power Warranty



Engineering Drawings

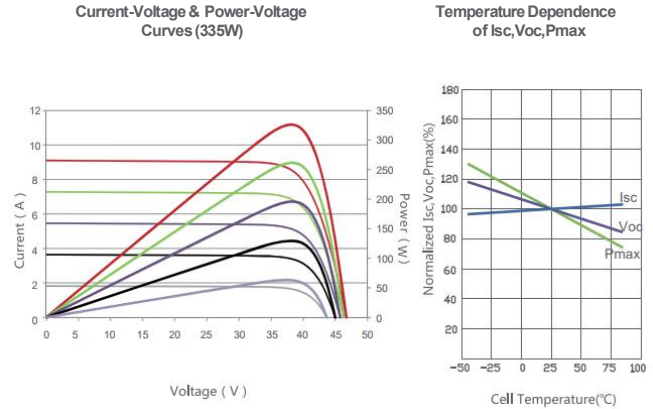


Packaging Configuration

(Two pallets = One stack)

26pcs/pallet, 52-57pcs/stack, 624-684 pcs/40'HQContainer

Electrical Performance & Temperature Dependence



Mechanical Characteristics

Cell Type	Poly-crystalline PERC 156.75×156.75mm (6 inch)
No. of cells	72 (6×12)
Dimensions	1956×992×40mm (77.01×39.05×1.57 inch)
Weight	21.0 kg
Front Glass	3.2mm, High Transmission, Low Iron, Tempered Glass
Frame	Anodized Aluminium Alloy
Junction Box	IP67 Rated
Output Cables	1×4.0mm ² , Length: 900mm or Customized Length

SPECIFICATIONS

Module Type	SP320P6-72		SP325P6-72		SP330P6-72		SP335P6-72		SP340P6-72	
	STC	NOCT	STC	NOCT	STC	NOCT	STC	NOCT	STC	NOCT
Maximum Power (Pmax)	320Wp	237Wp	325Wp	241Wp	330Wp	245Wp	335Wp	249Wp	340Wp	253Wp
Maximum Power Voltage (Vmp)	37.4V	34.7V	37.6V	35.0V	37.8V	35.3V	38.0V	35.6V	38.2V	35.9V
Maximum Power Current (Imp)	8.56A	6.83A	8.66A	6.89A	8.74A	6.94A	8.82A	6.99A	8.91A	7.05A
Open-circuit Voltage (Voc)	46.4V	43.0V	46.7V	43.3V	46.9V	43.6V	47.2V	43.8V	47.5V	44.0V
Short-circuit Current (Isc)	9.05A	7.35A	9.10A	7.40A	9.14A	7.45A	9.18A	7.52A	9.22A	7.98A
Module Efficiency STC (%)	16.49%		16.75%		17.01%		17.26%		17.52%	
Operating Temperature(°C)	-40°C~+85°C									
Maximum system voltage	1000VDC (IEC)									
Maximum series fuse rating	15A									
Power tolerance	0~+3%									
Temperature coefficients of Pmax	-0.38%/°C									
Temperature coefficients of Voc	-0.31%/°C									
Temperature coefficients of Isc	0.06%/°C									
Nominal operating cell temperature (NOCT)	45±2°C									

STC: ☀️ Irradiance 1000W/m²

☀️ Cell Temperature 25°C

☁️ AM=1.5

NOCT: ☀️ Irradiance 800W/m²

☀️ Ambient Temperature 20°C

☁️ AM=1.5

🌀 Wind Speed 1m/s

* Power measurement tolerance: ± 3%