

For a Free Quote:

Web: **EnergyPal.com/solar**

Call: **1-800-990-3725**

Email: **contact@energypal.com**

EnergyPal

**Solar Panel Guide
Specification Data Sheet**

**Sun Pacific Power Corp.
SPP/PVM220PS
SPP/PVM235S**

Also available on the web at
EnergyPal.com/sun-pacific-power-corp-solar-panels/spp-pvm235s



Sun Pacific Power Corporation

Building A Brighter Future

Data sheet: Model SPP/PVM220PS; 200-240 watts

Solar Modules Made in the USA

SPP/PVM220PS Series Photovoltaic Modules

Peak Power: 200-240Wp

► Features

- 60 multicrystalline solar cells connected in series
- For residential, commercial and utility grid-tied applications
- Output power tolerance of -0% +5%
- Robust, anodized aluminum frame and tempered glass
- Tyco junction box, easy click SOLARLOK® connectors and cables

► Quality, Reliability, and kWh Yield

SPP modules are powered by industry acknowledged high performance, reliable silicon cells. The modules have been designed and engineered with over 20 years of industry experience. Rigorous durability and performance tests are performed to ensure each module's lifetime performance and maximum kWh yield.

► Affordable Domestic Photovoltaic Panels

SPP PV modules are domestically sourced and produced. With an annual manufacturing capacity of 74 MW, ISO 9001 certified factories produce high-quality, efficient modules that are CEC listed and UL 1703 approved.



► Services and Support

We work closely with solar power providers, installers, energy service companies and financiers to develop & deliver your renewable energy system.

► A Sustainable Solution

High quality photovoltaic solar modules, predictable and controlled energy sourcing, on site energy supply.

HAVE A
Sun Pacific Power
SOLAR DAY

rev B, Jun. 2011

Sun Pacific Power Corporation

Tel: 1-888-845-0242

E-mail: info@sunpacificpower.com www.sunpacificpower.com



Sun Pacific Power Corporation

Building A Brighter Future

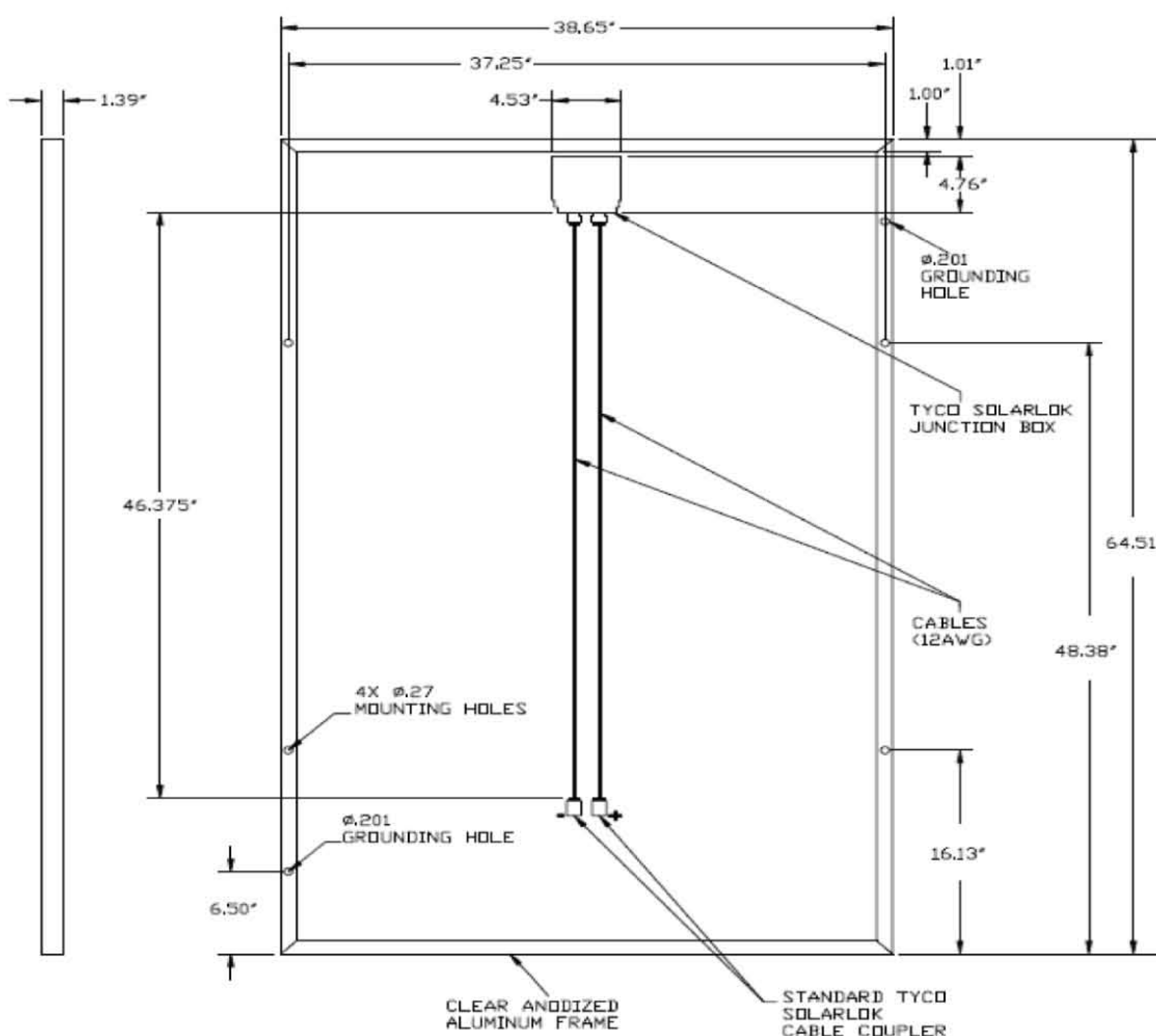
Model: SPP/PVM220PS Photovoltaic Modules

Electrical Characteristics (STC)						
Model	Pmax (watts)	Vmax (V dc)	Imax (A dc)	Voc (V dc)	Isc (A dc)	Module Efficiency
(ZZZZ)200(X)	200	27.8	7.29	36.2	7.81	12.4
(ZZZZ)205(X)	205	28.2	7.36	36.4	7.87	12.7
(ZZZZ)210(X)	210	28.6	7.43	36.7	7.93	13.1
(ZZZZ)215(X)	215	29.0	7.50	36.9	7.99	13.4
(ZZZZ)220(X)	220	29.4	7.57	37.1	8.05	13.7
(ZZZZ)225(X)	225	29.7	7.66	37.4	8.11	14.0
(ZZZZ)230(X)	230	30.1	7.73	37.6	8.17	14.3
(ZZZZ)235(X)	235	30.5	7.79	37.9	8.24	14.6
(ZZZZ)240(X)	240	30.8	7.88	38.1	8.30	14.9

Mechanical Characteristics	
Solar Cells	60 multicrystalline 6" silicon cells (156mm x156mm) in series
Front Cover	5/32" High Transmission Tempered Glass, 90.7% Transmittance
Encapsulant	EVA
Back Cover	White Polyester
Frame	Clear anodized aluminum, Double walled
Diodes	3 SL1515 (16A) bypass diodes
Junction Box	Tyco Solarlok with bypass diodes, UL 1703 compliant
Output Cables	12 AWG, 1.2 meters long with Standard Cable Coupler
Mechanical Load	Method 41, 45 lbs/ft ²
External Dimensions	64.51" x 38.65" x 1.39"; 1638mm x 982 mm x 35 mm
Weight	50 lbs; 22.7 Kg
Fire Rating	Class C

Operating Module Temperature	-40 to 85°C
Maximum Series Fuse Rating	15 A
Nominal Voltage	24 V
Limiting Reverse Current	8.3 A
Maximum system voltage	600V
Power output tolerance	-0/+4.999 watts
Current Temperature Coefficient	0.04 to 0.08 %/°C
Voltage Temperature Coefficient	-0.45 to -0.36 %/°C
Power Temperature Coefficient	-0.68 to -0.52 %/C

Parameter	Symbol	PVM220PS-SPP156210	PVM220PS-SPP156230
Performance at NOCT	Pmax	153.69	168.88
	Vpmax	25.43	26.73
	Ipmax	6.04	6.31
	Voc	33.08	34.32
	Isc	6.57	6.70



- ▶ 5 year limited warranty on materials and workmanship
- ▶ 12 year limited warranty on 90% of power output
- ▶ 25 year limited warranty on 80% of power output
 - ▶ 25 panels/pallet
 - ▶ certified to UL 1703 standards

rev B, Jun. 2011

Sun Pacific Power Corporation

Tel: 1-888-845-0242

E-mail: info@sunpacificpower.com www.sunpacificpower.com