



435-420 W Residential AC Module

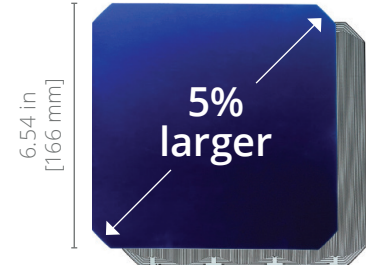
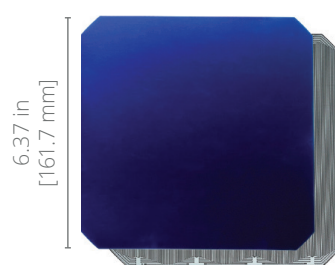
SunPower® Maxeon® Technology

Built specifically for use with the SunPower Equinox® system, the only fully integrated solution designed, engineered, and warranted by one company.



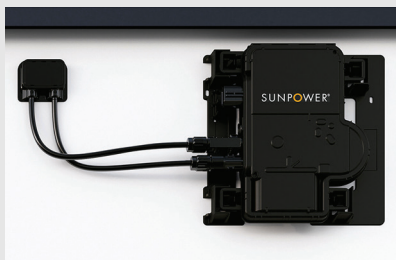
Highest Power Density Available.

The patented, solid-copper foundation Maxeon Gen 6 cell is over 5% larger than prior generations, delivering the highest efficiency M6 solar panel available.*



Part of the SunPower Equinox® Solar System

- Compatible with mySunPower monitoring
- Seamless aesthetics



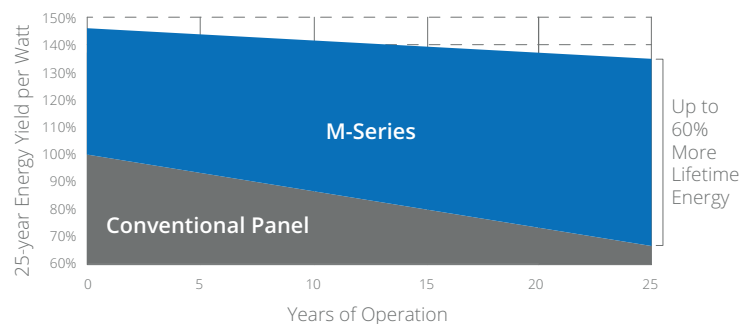
Factory-integrated Microinverter

- Highest-power integrated AC module in solar
- Engineered and calibrated by SunPower for SunPower AC modules



Highest Lifetime Energy and Savings

Designed to deliver 60% more energy over 25 years in real-world conditions like partial shade and high temperatures.¹



Best Reliability, Best Warranty

With more than 42.6 million and 15 GW modules deployed around the world, SunPower technology is proven to last. That's why we stand behind our module and microinverter with the industry's best 25-year Combined Power and Product Warranty, including the highest Power Warranty in solar.

M-Series: M435 | M420 Maxeon Residential AC Module

AC Electrical Data		
Inverter Model: Type H (Enphase IQ7HS)	@240 VAC	@208 VAC
Max. Continuous Output Power (VA)	384	369
Nom. (L-L) Voltage/Range ² (V)	240 / 211–264	208 / 183–229
Max. Continuous Output Current (Arms)	1.60	1.77
Max. Units per 20 A (L-L) Branch Circuit ³	10	9
CEC Weighted Efficiency	97.0%	96.5%
Nom. Frequency	60 Hz	
Extended Frequency Range	47–68 Hz	
AC Short Circuit Fault Current Over 3 Cycles	4.82 A rms	
Overvoltage Class AC Port	III	
AC Port Backfeed Current	18 mA	
Power Factor Setting	1.0	
Power Factor (adjustable)	0.85 (inductive) / 0.85 (capacitive)	

DC Power Data		
	SPR-M435-H-AC	SPR-M420-H-AC
Nom. Power ⁵ (Pnom) W	435	420
Power Tolerance	+5/–0%	
Module Efficiency	22.5%	21.7%
Temp. Coef. (Power)	–0.29%/° C	
Shade Tolerance	Integrated module-level max. power point tracking	

Tested Operating Conditions	
Operating Temp.	–40° F to +185° F (–40° C to +85° C) 360 W
Max. Ambient Temp.	122° F (50° C)
Max. Test Load ⁷	Wind: 125 psf, 6000 Pa, 611 kg/m ² back Snow: 187 psf, 9000 Pa, 917 kg/m ² front
Max. Design Load	Wind: 75 psf, 3600 Pa, 367 kg/m ² back Snow: 125 psf, 6000 Pa, 611 kg/m ² front
Impact Resistance	1 inch (25 mm) diameter hail at 52 mph (23 m/s)

Mechanical Data	
Solar Cells	66 Maxeon Gen 6
Front Glass	High-transmission tempered glass with anti-reflective coating
Environmental Rating	Outdoor rated
Frame	Class 1 black anodized (highest AAMA rating)
Weight	48 lbs (21.8 kg)
Recommended Max. Module Spacing	1.3 in. (33 mm)

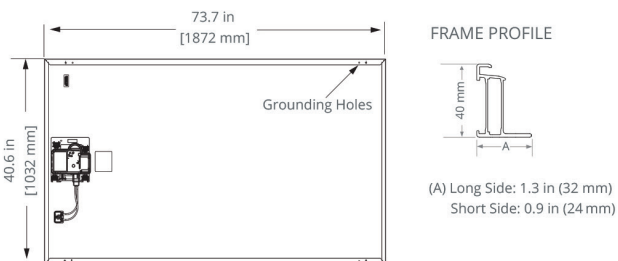
* Based on datasheet review of websites of top 20 manufacturers per IHS, as of July 2021.
 1 Maxeon 435 W, 22.5% efficient, compared to a Conventional Panel on same-sized arrays (260 W, 16% efficient, approx. 1.6 m²), 7.9% more energy per watt (based on PVsyst pan files for avg. US climate), 0.5%/yr slower degradation rate (Jordan, et. al. "Robust PV Degradation Methodology and Application." PVSC 2018).
 2 Based on search of datasheet values from websites of top 10 manufacturers per IHS, as of June 2021.
 3 Jordan, et. al. Robust PV Degradation Methodology and Application. PVSC 2018.
 4 Factory set to IEEE 1547a-2014 default settings. CA Rule 21 default settings profile set during commissioning.
 5 Standard Test Conditions (1000 W/m² irradiance, AM 1.5, 25°C). All DC voltage is fully contained within the module.
 6 UL Listed as PVRSE and conforms with NEC 2014 and NEC 2017 690.12; and C22.1-2015 Rule 64-218 Rapid Shutdown of PV Systems, for AC and DC conductors; when installed according to manufacturer's instructions.
 7 Please read the safety and installation instructions for more information regarding load ratings and mounting configurations.

See www.sunpower.com/company for more reference information.
 For more details, see extended datasheet: www.sunpower.com/solar-resources.
 Specifications included in this datasheet are subject to change without notice.

©2021 SunPower Corporation. All rights reserved. SUNPOWER, the SUNPOWER logo and EQUINOX are registered trademarks of SunPower Corporation in the U.S. MAXEON is a registered trademark of Maxeon Solar Technologies, Ltd. For more information visit www.maxeon.com/legal.

Warranties, Certifications, and Compliance	
Warranties	<ul style="list-style-type: none"> • 25-year limited power warranty • 25-year limited product warranty
Certifications and Compliance	<ul style="list-style-type: none"> • UL 1741 / IEEE-1547 • UL 1741 AC Module (Type 2 fire rated) • UL 62109-1 / IEC 62109-2 • FCC Part 15 Class B • ICES-0003 Class B • CAN/CSA-C22.2 NO. 107.1-01 • CA Rule 21 (UL 1741 SA)4 (includes Volt/Var and Reactive Power Priority) • UL Listed PV Rapid Shutdown Equipment⁶ <p>Enables installation in accordance with:</p> <ul style="list-style-type: none"> • NEC 690.6 (AC module) • NEC 690.12 Rapid Shutdown (inside and outside the array) • NEC 690.15 AC Connectors, 690.33(A)–(E)(1) <p>When used with AC module Q Cables and accessories (UL 6703 and UL 2238)⁶:</p> <ul style="list-style-type: none"> • Rated for load break disconnect
PID Test	1000 V: IEC 62804

Packaging Configuration	
Modules per pallet	25
Packaging box dimensions	1915 * 1072 * 1220 mm
Pallet gross weight	590 kg
Pallets per container	32
Net weight per container	18,880 kg



Please read the safety and installation instructions for details.



539973 Rev A / LTR_EN
 Publication Date: August 2021