

For a Free Quote:

Web: EnergyPal.com/solar

Call: 1-800-990-3725

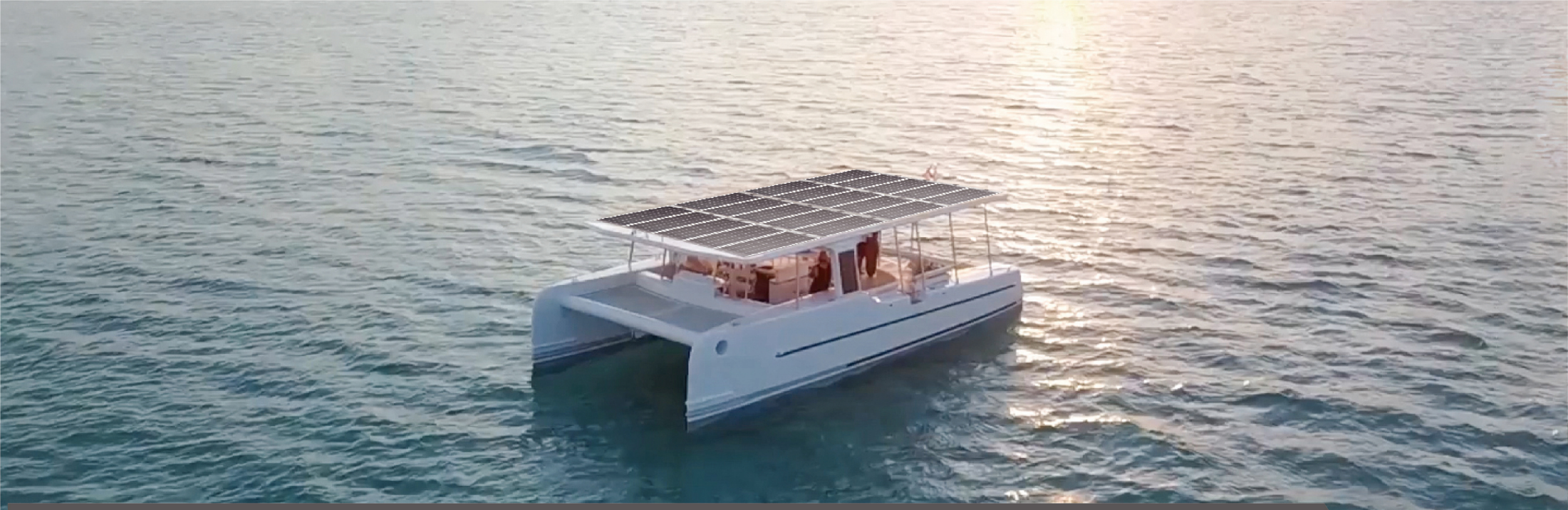
Email: contact@energypal.com

EnergyPal

Solar Panel Guide Specification Data Sheet

**Yuhuan Sunpro Power Co., Ltd.
SEMI-FLEXIBLE SOLAR PANEL
SPSF-20W**

Also available on the web at
EnergyPal.com/yuhuan-sunpro-power-co-ltd-solar-panels/spsf-20w

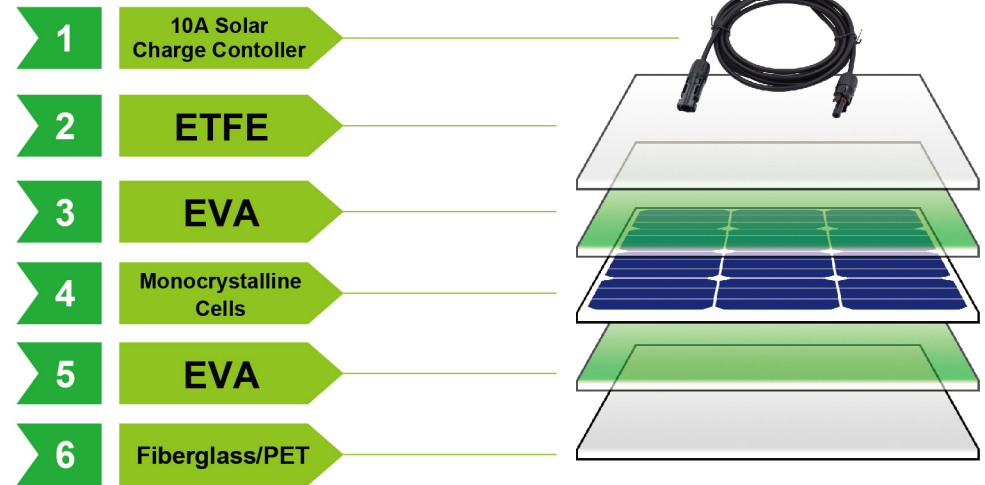


SUNPRO SEMI-FLEXIBLE SOLAR PANEL





Solar Panel Layer:



SUNPRO SEMI-FLEXIBLE SOLAR PANEL

Folding Module	SPSF-20W	SPSF-30W	SPSF-50W	SPSF-75W	SPSF-100W	SPSF-120W	SPSF-160W
Encapsulation	ETFE/EVA/Cell/EVA/Backsheet (PET or Fiberglass)						
Maximum Power Pmax	20W	30W	50W	75W	100W	120W	160W
Maximum Power Voltage (Vmp)	18V	18V	18V	18V	18V	18V	18V
Maximum Power Current (Imp)	1.11A	1.67A	2.78A	4.17A	5.56A	6.67A	8.89A
Open Circuit Voltage (Voc)	21.24V	21.24V	21.24V	21.24V	21.24V	21.24V	21.24V
Short Circuit Current (Isc)	1.22A	1.83A	3.06A	4.58A	6.11A	7.33A	9.78A
Cell Efficiency	18.0%	18.0%	18.0%	18.0%	18.0%	18.0%	18.0%
Dimension	600x300x2.5mm	615x440x2.5mm	880x440x2.5mm	1070x515x2.5mm	1240x550x2.5mm	1160x670x2.5mm	1500x670x2.5mm
Weight	0.7kg	1.0kg	1.4kg	2.0kg	2.6kg	3.0kg	3.8kg
Tolerance	±3%						
Max System Open Circuit Voltage	1000V						
Controller	PMW/MPPT						
Operate Temperature Range	-40 C to +85 C						
Relative Humidity	0~100%						

Description

1. User Manual x1