

For a Free Quote:

Web: EnergyPal.com/solar

Call: 1-800-990-3725

Email: contact@energypal.com

EnergyPal

Solar Panel Guide Specification Data Sheet

**Sunrise Energy Co., Ltd.
SR-M660HLP-370W 9BB 166
SR-M660365HLP**

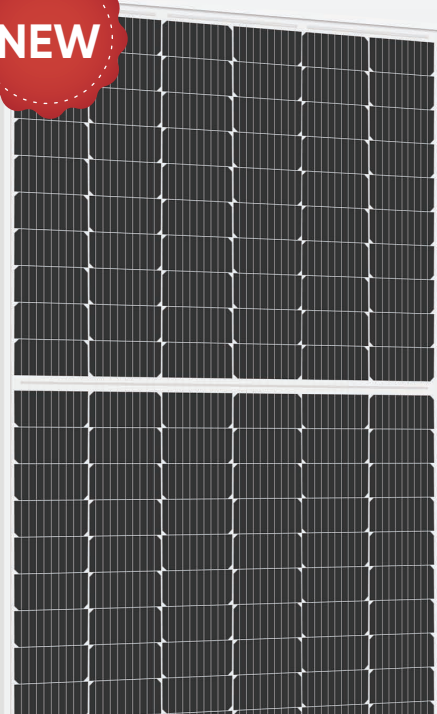
Also available on the web at
EnergyPal.com/sunrise-energy-co-ltd-solar-panels/sr-m660365hlp

Godzilla



SUNRISE

NEW



Godzilla Series

Large Dimension Plus Half Cell Mono Solar Module

SR-M660HLP
360~375W

SR-M660360HLP
SR-M660365HLP
SR-M660370HLP
SR-M660375HLP

IEC61215/IEC61730

ISO9001:Quality Management System ISO14001:Environmental Management System

ISO45001:Occupational Health and Safety Management System



PID Resistance



Better Low-light Performance



9 Bus Bar Half Cut Cell With PERC Technology



Strengthened Mechanical Support
5400 Pa Snow Load, 2400 Pa Wind Load

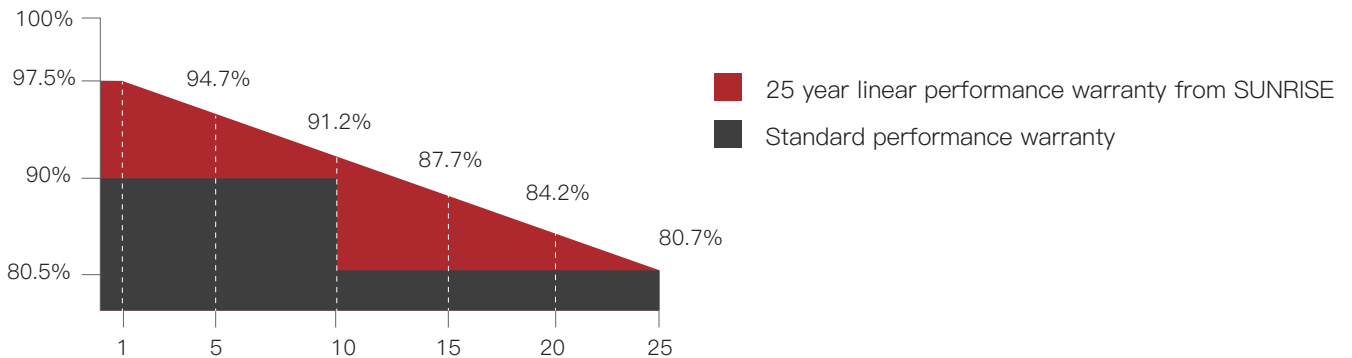


0~3% Positive Tolerance



Higher Power Output

Additional value from SUNRISE linear warranty



SUNRISE ENERGY CO., LTD

TEL:+86-519-81688389

Web:www.sunriseenergy.cn

E-mail:info@sunriseenergy.cn

ADD:No.20 Tongzi River West Road, Zhonglou Development Zone, Changzhou, Jiangsu

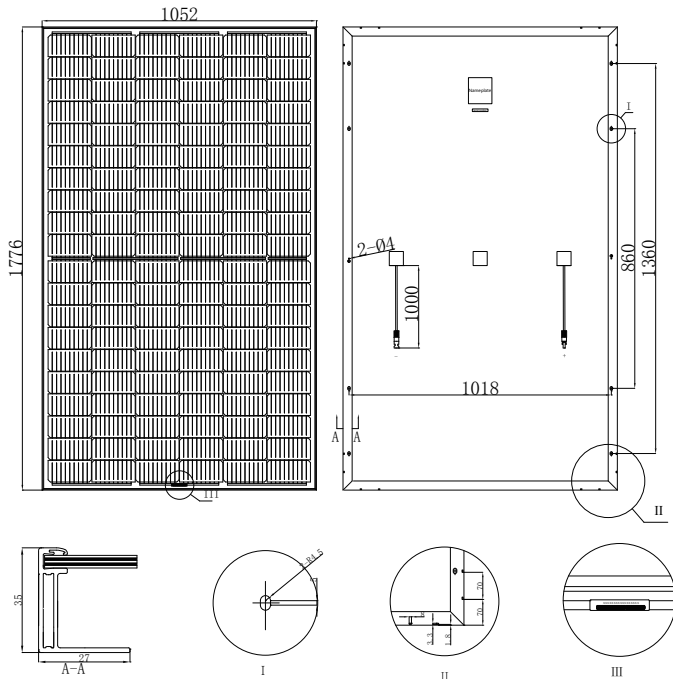
Large Dimension Plus Half Cell(6x20) Mono Solar Module **SUNRISE**

Module Type		SR-M660360HLP		SR-M660365HLP		SR-M660370HLP		SR-M660375HLP	
Test Environment		STC	NOCT	STC	NOCT	STC	NOCT	STC	NOCT
Tolerance	(%)	0~+3		0~+3		0~+3		0~+3	
Module Efficiency	(%)	19.46		19.73		20		20.27	
Maximum Power	Pmax(W)	360	266.59	365	270.29	370	273.99	375	277.69
Open Circuit Voltage	Voc(V)	40.92	38.18	41.12	38.38	41.32	38.48	41.56	38.7
Short Circuit Current	Isc(A)	11.22	9.01	11.3	9.07	11.39	9.15	11.46	9.21
Maximum Power Voltage	Vm(V)	33.69	31.08	33.89	31.28	34.09	31.48	34.29	31.66
Maximum Power Current	Im(A)	10.69	8.55	10.78	8.62	10.86	8.69	10.94	8.75
Cell Type	(mm)	166x83(9BB Mono-Crystalline Silicon)							
Number of Cells	(Pcs)	120(6x20)							
Maximum System Voltage	(V)	DC1000							
Temp. Coeff. of Voc	(%/°C)	-0.285							
Temp. Coeff. of Isc	(%/°C)	0.055							
Temp. Coeff. of Pm	(%/°C)	-0.365							
Operating Temperature	°C	-40 to 85							
Nominal Operating Cell Temperature (NOCT)	°C	45±2							
Max. Series Fuse	(A)	15							
Pressure Bearing	(Pa)	5400							
Wind Bearing	(Pa)	2400							

STC: Irradiance 1000W/m², Cell temperature 25°C, AM1.5

NOCT: Irradiance 800W/m², Ambient temperature 20°C, Wind speed 1m/s

ENGINEERING DRAWINGS

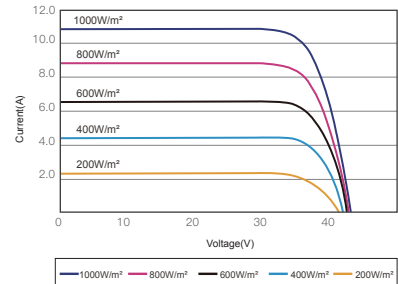


Manufactured in China

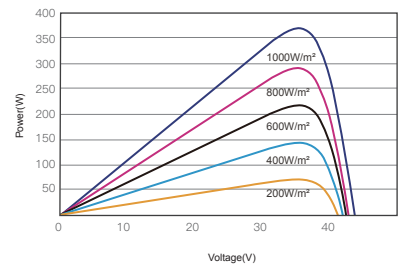
MATERIAL DETAILS

Frame	Anodized aluminum
Glass	3.2mm low-iron tempered suede glass
Cell	6x20pcs 166x83mm mono solar cell
Junction Box	Rated Current ≥15A, IP ≥67, TÜV & UL
Cable&Connector	4mm ² , MC4 or MC4 compatible
Cable length	1000mm or as customer's requirements

IV CURVES



I-V CURVES OF PV MODULE(370W)



P-V CURVES OF PV MODULE(370W)

PACKING DETAILS

Dimension	(mm)	1776x1052x35
Weight	(kg)	20
Loading Capacity		832 pcs/40'HC
Packing	pcs/pallet	30