

**For a Free Quote:**

**Web: [EnergyPal.com/solar](http://EnergyPal.com/solar)**

**Call: 1-800-990-3725**

**Email: [contact@energypal.com](mailto:contact@energypal.com)**

# **EnergyPal**

## **Solar Panel Guide Specification Data Sheet**

**Sunrise Energy Co., Ltd.  
SR-M660HLP-370W 9BB 166  
SR-M660370HLP**

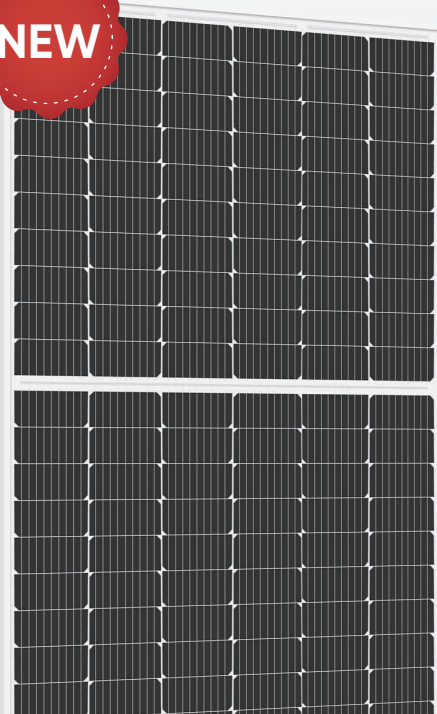
Also available on the web at  
[EnergyPal.com/sunrise-energy-co-ltd-solar-panels/sr-m660370hlp](http://EnergyPal.com/sunrise-energy-co-ltd-solar-panels/sr-m660370hlp)

# Godzilla



# SUNRISE

**NEW**



## Godzilla Series

Large Dimension Plus Half Cell Mono Solar Module

SR-M660HLP  
360~375W

SR-M660360HLP  
SR-M660365HLP  
SR-M660370HLP  
SR-M660375HLP

IEC61215/IEC61730

ISO9001:Quality Management System ISO14001:Environmental Management System

ISO45001:Occupational Health and Safety Management System



PID Resistance



Better Low-light Performance



9 Bus Bar Half Cut Cell With PERC Technology



Strengthened Mechanical Support 5400 Pa Snow Load, 2400 Pa Wind Load

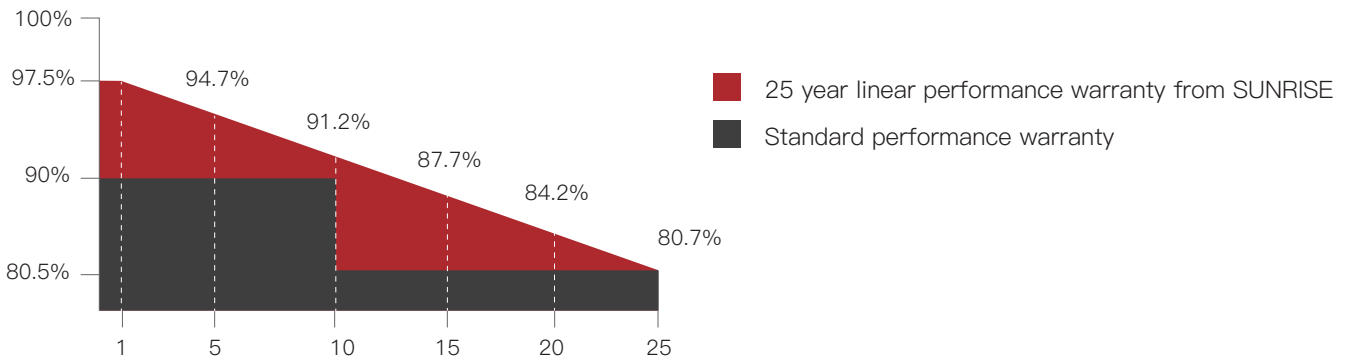


0~3% Positive Tolerance



Higher Power Output

### Additional value from SUNRISE linear warranty



SUNRISE ENERGY CO., LTD

TEL:+86-519-81688389

Web:www.sunriseenergy.cn

E-mail:info@sunriseenergy.cn

ADD:No.20 Tongzi River West Road, Zhonglou Development Zone, Changzhou, Jiangsu

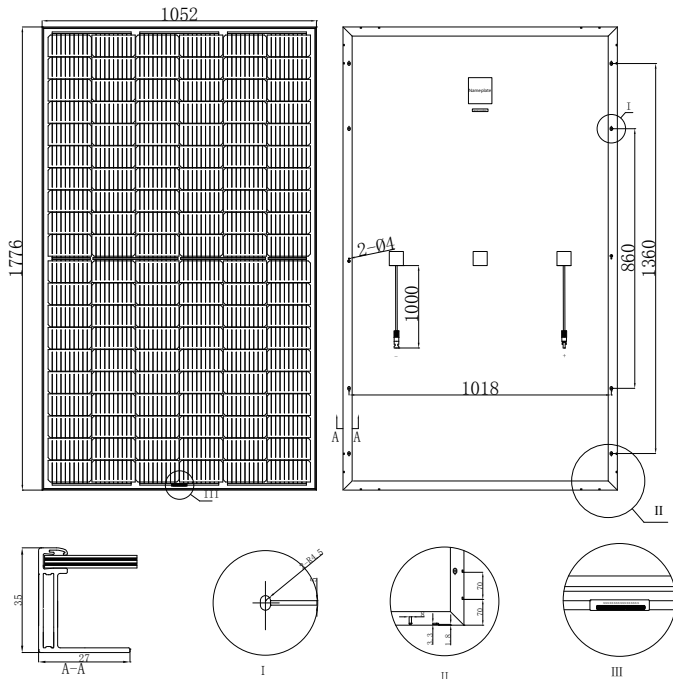
# Large Dimension Plus Half Cell(6x20) Mono Solar Module **SUNRISE**

| Module Type                               |         | SR-M660360HLP                        |        | SR-M660365HLP |        | SR-M660370HLP |        | SR-M660375HLP |        |
|---|---------|--------------------------------------|--------|---------------|--------|---------------|--------|---------------|--------|
| Test Environment                          |         | STC                                  | NOCT   | STC           | NOCT   | STC           | NOCT   | STC           | NOCT   |
| Tolerance                                 | (%)     | 0~+3                                 |        | 0~+3          |        | 0~+3          |        | 0~+3          |        |
| Module Efficiency                         | (%)     | 19.46                                |        | 19.73         |        | 20            |        | 20.27         |        |
| Maximum Power                             | Pmax(W) | 360                                  | 266.59 | 365           | 270.29 | 370           | 273.99 | 375           | 277.69 |
| Open Circuit Voltage                      | Voc(V)  | 40.92                                | 38.18  | 41.12         | 38.38  | 41.32         | 38.48  | 41.56         | 38.7   |
| Short Circuit Current                     | Isc(A)  | 11.22                                | 9.01   | 11.3          | 9.07   | 11.39         | 9.15   | 11.46         | 9.21   |
| Maximum Power Voltage                     | Vm(V)   | 33.69                                | 31.08  | 33.89         | 31.28  | 34.09         | 31.48  | 34.29         | 31.66  |
| Maximum Power Current                     | Im(A)   | 10.69                                | 8.55   | 10.78         | 8.62   | 10.86         | 8.69   | 10.94         | 8.75   |
| Cell Type                                 | (mm)    | 166x83(9BB Mono-Crystalline Silicon) |        |               |        |               |        |               |        |
| Number of Cells                           | (Pcs)   | 120(6x20)                            |        |               |        |               |        |               |        |
| Maximum System Voltage                    | (V)     | DC1000                               |        |               |        |               |        |               |        |
| Temp. Coeff. of Voc                       | (%/°C)  | -0.285                               |        |               |        |               |        |               |        |
| Temp. Coeff. of Isc                       | (%/°C)  | 0.055                                |        |               |        |               |        |               |        |
| Temp. Coeff. of Pm                        | (%/°C)  | -0.365                               |        |               |        |               |        |               |        |
| Operating Temperature                     | °C      | -40 to 85                            |        |               |        |               |        |               |        |
| Nominal Operating Cell Temperature (NOCT) | °C      | 45±2                                 |        |               |        |               |        |               |        |
| Max. Series Fuse                          | (A)     | 15                                   |        |               |        |               |        |               |        |
| Pressure Bearing                          | (Pa)    | 5400                                 |        |               |        |               |        |               |        |
| Wind Bearing                              | (Pa)    | 2400                                 |        |               |        |               |        |               |        |

STC: Irradiance 1000W/m<sup>2</sup>, Cell temperature 25°C, AM1.5

NOCT: Irradiance 800W/m<sup>2</sup>, Ambient temperature 20°C, Wind speed 1m/s

## ENGINEERING DRAWINGS

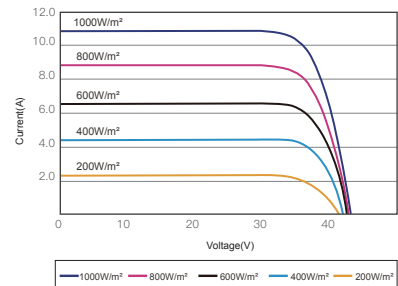


Manufactured in China

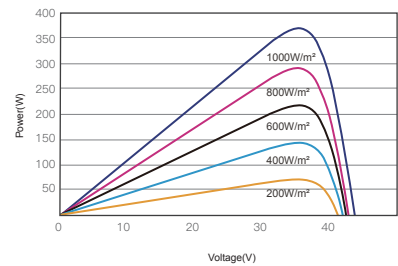
## MATERIAL DETAILS

|                 |  |
|-----------------|--|
| Frame           | Anodized aluminum                        |
| Glass           | 3.2mm low-iron tempered suede glass      |
| Cell            | 6x20pcs 166x83mm mono solar cell         |
| Junction Box    | Rated Current ≥15A, IP ≥67, TÜV & UL     |
| Cable&Connector | 4mm <sup>2</sup> , MC4 or MC4 compatible |
| Cable length    | 1000mm or as customer's requirements     |

## IV CURVES



I-V CURVES OF PV MODULE(370W)



P-V CURVES OF PV MODULE(370W)

## PACKING DETAILS

|                  |            |               |
|------------------|------------|---------------|
| Dimension        | (mm)       | 1776×1052×35  |
| Weight           | (kg)       | 20            |
| Loading Capacity |            | 832 pcs/40'HC |
| Packing          | pcs/pallet | 30            |