

For a Free Quote:

Web: EnergyPal.com/solar

Call: 1-800-990-3725

Email: contact@energypal.com

EnergyPal

Solar Panel Guide Specification Data Sheet

**DONGGUAN SUNWORTH NEW ENERGY TECH
CO.,LTD
SW100-105M
SW100M**

Also available on the web at
EnergyPal.com/dongguan-sunworth-new-energy-tech-co-ltd-solar-panels/sw100m



Company

Sunworth solar, we commit ourselves to R&D, manufacture and technical innovation on PV modules and solar power system. To provide high quality products with various specifications for customers is always our pursuit.

Characteristics

- Use high quality solar cells to advanced encapsulation
- Adopt high transparent low-iron tempered glass, high quality anti-UV EVA and back sheet.
- With multi-ply performance testing for each module, to ensure the product quality and output performance.
- Using anodization aluminum frame with anticorrosion, to ensure solar module working under extremely and badly outdoors environment

Warranty

- 20 years power output warranty, 90% power output for 5years, and 80% power output for 20years.
- 3 years workmanship warranty.

Quality and safety

- ISO9001:2008 certified supplier, we provide world first class solar products for clients.
- IEC 61215, IEC 61730, IEC, CQC, CGC, CE, approved.



Electrical Characteristics

Model No.	SW100M	SW105M
Maximum Power (Pmax)	100W	105W
Max-power Voltage (Vmp)	18.6V	18.8V
Max-power Current (Imp)	5.38A	5.59A
Open-circuit Voltage (Voc)	22.5V	22.6V
Short-circuit Current (Isc)	5.84A	6.12A
Module Efficiency	15.0%	15.7%
Operating Temperature	-40°C~+85°C	
Maximum System Voltage	600Vdc	
Maximum Series Fuse Rating	10A	
Power tolerance	±3%	

*STC condition: 1000 W/m²,1.5AM and 25°C cell temperature.



Temperature characteristics

NOCT	46°C±2°C
Temperature Co-efficient of Pmax	-0.42%/°C
Temperature Co-efficient of Voc	-0.35%/°C
Temperature Co-efficient of Isc	0.05%/°C

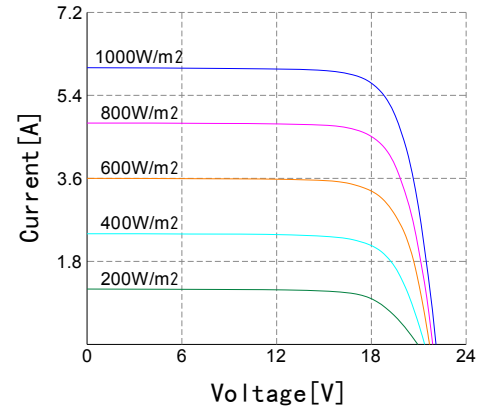
Mechanical characteristics

Model No.	SW100M/105M
Cell Type	Monocrystalline silicon 156*104mm
Cell Arrangement	36(4*9)
Dimensions	1005*665*30mm
Weight	7.5Kg
Front Cover	3.2mm tempered glass
Frame Material	Anodized aluminium alloy
Junction Box	IP65 rated
Output Cables	Optional
Connectors	Optional

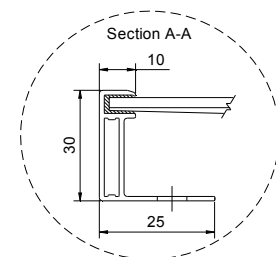
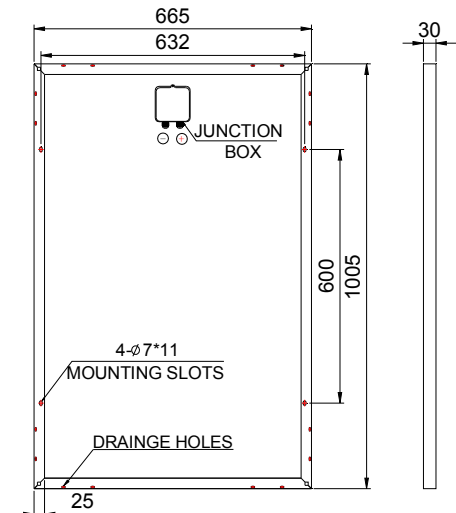
Packing

Packing	20'GP	40'GP
Pieces per Carton	2	2
Carton/Pallet	28	28
Pallet/Container	16	32
Pieces/container	896	1792

I-V Curve



Dimensions



SUNWORTH SOLAR ENERGY CO., LTD

TEL: +86-769-2332 0882

Website: www.sun-worth.com

E-mail: sales@sun-worth.com