

For a Free Quote:

Web: EnergyPal.com/solar

Call: 1-800-990-3725

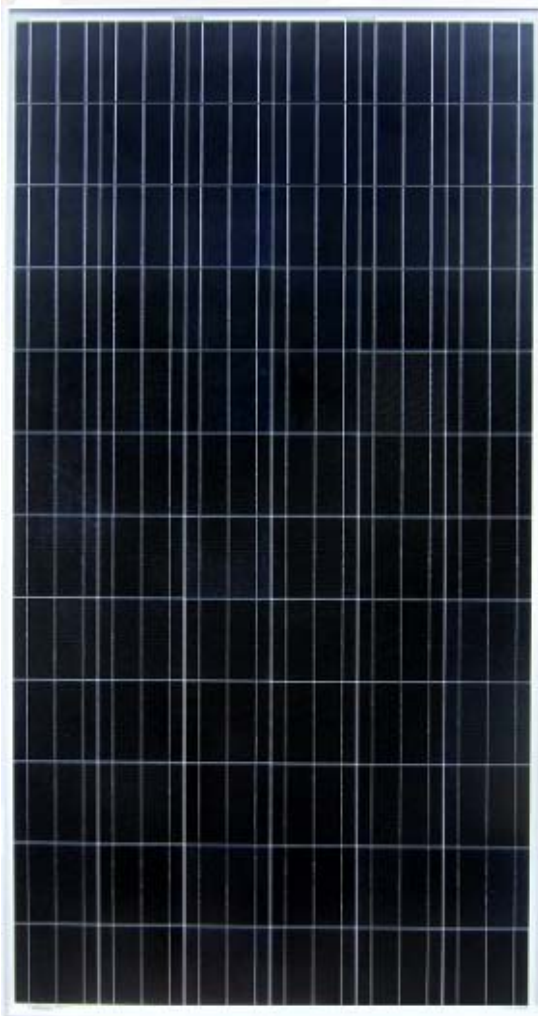
Email: contact@energypal.com

EnergyPal

Solar Panel Guide Specification Data Sheet

**DONGGUAN SUNWORTH NEW ENERGY TECH
CO.,LTD
SW305-320P
SW315P**

Also available on the web at
EnergyPal.com/dongguan-sunworth-new-energy-tech-co-ltd-solar-panels/sw315p



Company

Sunworth solar, we commit ourselves to R&D, manufacture and technical innovation on PV modules and solar power system. To provide high quality products with various specifications for customers is always our pursuit.

Characteristics

- High efficiency solar cell to keep the modules efficiency reach to 16.53%.
- Positive tolerance to ensure higher output.
- Excellent performance under weak light conditions.
- Modules withstand extremely (temperature, load and impact) TUV certification.
- All modules combination and packing through stepping current to keep effectively reduce mismatch loss within.
- 100% EL test to keep higher quality.



Anodized aluminum frame withstand corrosion and damage, Special osculum can reduce destruction by water freeze.

Warranty

- 25 years power output warranty, 90% power output for 10years, and 80% power output for 25years.
- 5 years workmanship warranty.



IP65 junction box long-term weather endurance.

Quality and safety

- ISO9001:2008 certified supplier, we provide world first class solar products for clients.
- IEC 61215, IEC 61730, IEC, CQC, CGC, CE, approved.



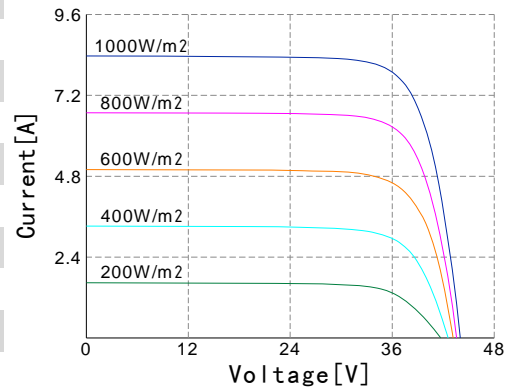


Electrical Characteristics

Model No.	SW305P	SW310P	SW315P	SW320P
Maximum Power (Pmax)	305W	310W	315W	320W
Max-power Voltage (Vmp)	37.0V	37.3V	37.7V	38.1V
Max-power Current (Imp)	8.25A	8.32A	8.36A	8.40A
Open-circuit Voltage (Voc)	45.4V	45.7V	45.8V	46.0V
Short-circuit Current (Isc)	8.83A	8.91A	8.95A	8.98A
Module Efficiency	15.76%	16.01%	16.27%	16.53%
Operating Temperature	-40°C~+85°C			
Maximum System Voltage	1000Vdc			
Maximum Series Fuse Rating	20A			
Power tolerance	0~+5W			

*STC condition: 1000 W/m², 1.5AM and 25°C cell temperature.

I-V Curve



Temperature characteristics

NOCT	46°C±2°C
Temperature Co-efficient of Pmax	-0.398%/°C
Temperature Co-efficient of Voc	-0.34%/°C
Temperature Co-efficient of Isc	0.0576%/°C

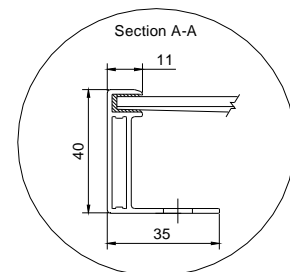
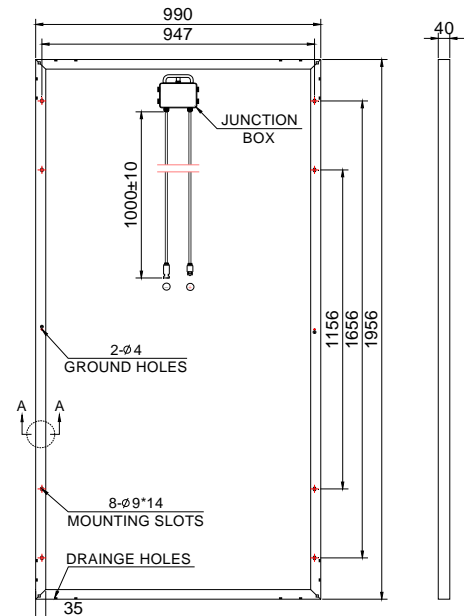
Mechanical characteristics

Model No.	SW305P/310P/315P/320P
Cell Type	Polycrystalline silicon 156*156mm
Cell Arrangement	72(6*12)
Dimensions	1956*990*40mm
Weight	21.8Kg
Front Cover	3.2mm tempered glass
Frame Material	Anodized aluminium alloy
Junction Box	IP65 rated
Output Cables	4mm ² , Length 1000mm
Connectors	MC4 comparable

Packing

Packing	20'GP	40'GP
Pieces per Carton	26/13mantissa	26/13mantissa
Carton/Pallet	1	1
Pallet/Container	12(2PCS mantissa)	24(2PCS mantissa)
Pieces/container	286	598

Dimensions



SUNWORTH SOLAR ENERGY CO., LTD

TEL: +86-769-2332 0882

Website: www.sun-worth.com

E-mail: sales@sun-worth.com