

**For a Free Quote:**

**Web: [EnergyPal.com/solar](http://EnergyPal.com/solar)**

**Call: 1-800-990-3725**

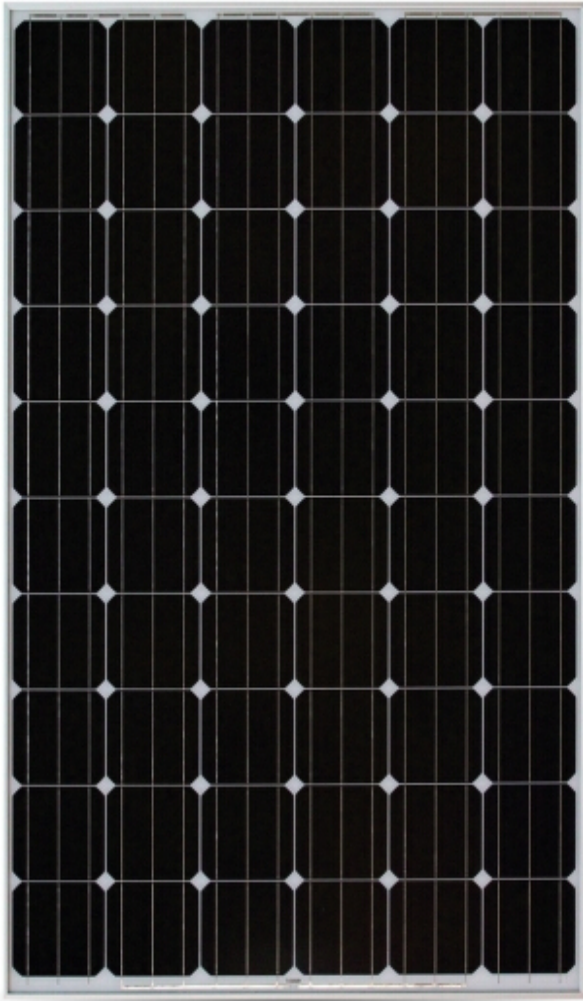
**Email: [contact@energypal.com](mailto:contact@energypal.com)**

# **EnergyPal**

## **Solar Panel Guide Specification Data Sheet**

**DONGGUAN SUNWORTH NEW ENERGY TECH  
CO.,LTD  
SW325-340M  
SW340M**

Also available on the web at  
[EnergyPal.com/dongguan-sunworth-new-energy-tech-co-ltd-solar-panels/sw340m](http://EnergyPal.com/dongguan-sunworth-new-energy-tech-co-ltd-solar-panels/sw340m)



### Company

Sunworth solar, we commit ourselves to R&D, manufacture and technical innovation on PV modules and solar power system. To provide high quality products with various specifications for customers is always our pursuit.

### Characteristics

- High efficiency solar cell to keep the modules efficiency reach to 17.56%.
- Positive tolerance to ensure higher output.
- Excellent performance under weak light conditions.
- Modules withstand extremely (temperature, load and impact) TUV certification.
- All modules combination and packing through stepping current to keep effectively reduce mismatch loss within.
- 100% EL test to keep higher quality.



Anodized aluminum frame withstand corrosion and damage, Special osculum can reduce destruction by water freeze.

### Warranty

- 25 years power output warranty, 90% power output for 10years, and 80% power output for 25years.
- 5 years workmanship warranty.



IP65 junction box long-term weather endurance.

### Quality and safety

- ISO9001:2008 certified supplier, we provide world first class solar products for clients.
- IEC 61215, IEC 61730, IEC, CQC, CGC, CE, approved.



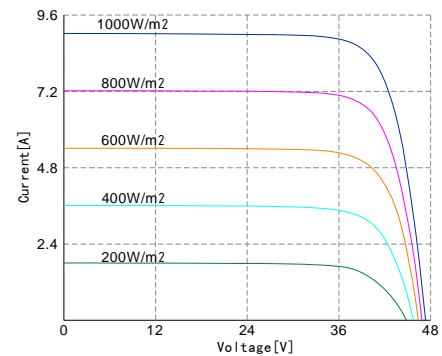


## Electrical Characteristics

Model No.	SW325M	SW330M	SW335M	SW340M
Maximum Power (Pmax)	325W	330W	335W	340W
Max-power Voltage (Vmp)	38.1V	38.2V	38.4V	38.5V
Max-power Current (Imp)	8.54A	8.64A	8.74A	8.84A
Open-circuit Voltage (Voc)	46.6V	46.8V	46.9V	47.3V
Short-circuit Current (Isc)	9.06A	9.17A	9.29A	9.34A </td
Module Efficiency	16.79%	17.05%	17.30%	17.56%
Operating Temperature	-40°C~+85°C			
Maximum System Voltage	1000Vdc			
Maximum Series Fuse Rating	20A			
Power tolerance	0~+5W			

\*STC condition: 1000 W/m<sup>2</sup>,1.5AM and 25°C cell temperature.

## I-V Curve



## Temperature characteristics

NOCT	46°C±2°C
Temperature Co-efficient of Pmax	-0.43%/°C
Temperature Co-efficient of Voc	-0.35%/°C
Temperature Co-efficient of Isc	0.05%/°C

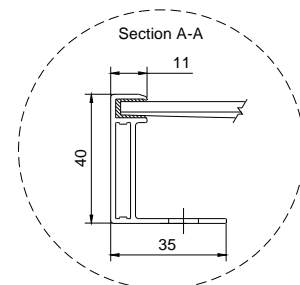
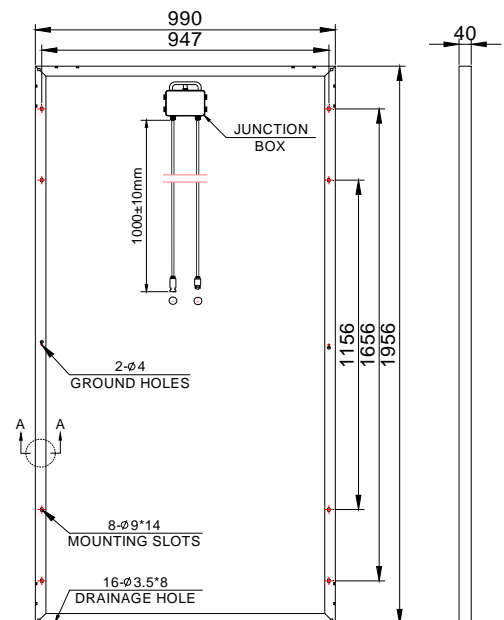
## Mechanical characteristics

Model No.	SW325M/330M/335M/340M
Cell Type	Monocrystalline silicon 156*156mm
Cell Arrangement	72(6*12)
Dimensions	1956*990*40mm
Weight	21.8Kg
Front Cover	3.2mm tempered glass
Frame Material	Anodized aluminium alloy
Junction Box	IP65 rated
Output Cables	4mm <sup>2</sup> ,Length 1000mm
Connectors	MC4 comparable

## Packing

Packing	20'GP	40'GP
Pieces per Carton	26/13mantissa	26/13mantissa
Carton/Pallet	1	1
Pallet/Container	12(2PCS mantissa)	24(2PCS mantissa)
Pieces/container	286	598

## Dimensions



## SUNWORTH SOLAR ENERGY CO., LTD

TEL: +86-769-2332 0882

Website: www.sun-worth.com

E-mail: sales@sun-worth.com