

**For a Free Quote:**

**Web: [EnergyPal.com/solar](http://EnergyPal.com/solar)**

**Call: 1-800-990-3725**

**Email: [contact@energypal.com](mailto:contact@energypal.com)**

# **EnergyPal**

## **Solar Panel Guide Specification Data Sheet**

**Tainergy Tech Co., Ltd.  
TKSG-295-315  
TKSG-31501**

Also available on the web at  
[EnergyPal.com/tainergy-tech-co-ltd-solar-panels/tksg-31501](http://EnergyPal.com/tainergy-tech-co-ltd-solar-panels/tksg-31501)



## Multi-Crystalline Solar Module



### Power Warranty

90% up to 10 years  
80% up to 25 years



### Quality Reliability Test

Pass the salt spray corrosion test, level 6

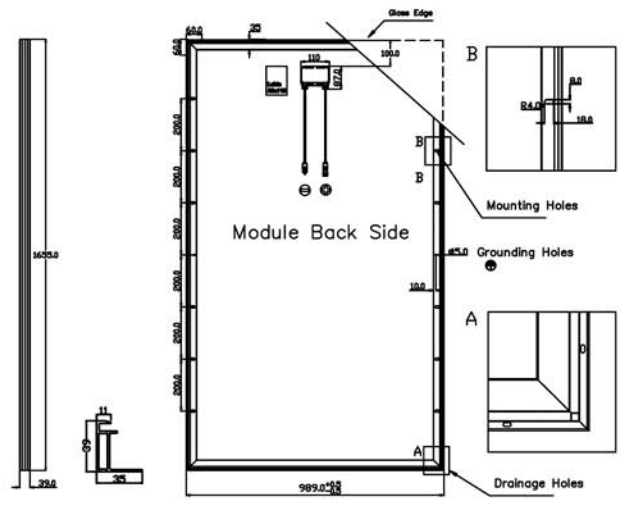


### PID Resist Cell

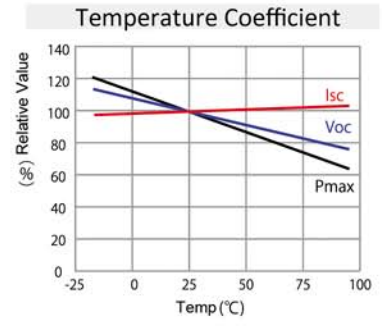
- 1) CHEMITOX (Japan Testing laboratory)  
Chemitox 1000V/85°C/85RH/96Hrs
- 2) ITRI (Taiwan Testing Laboratory)  
PI-Berlin 1000V/85°C/85RH/48Hrs  
UL 1000V/25°C/100RH/168Hrs  
TUV/IEC 1000V/60°C/85RH/96Hrs



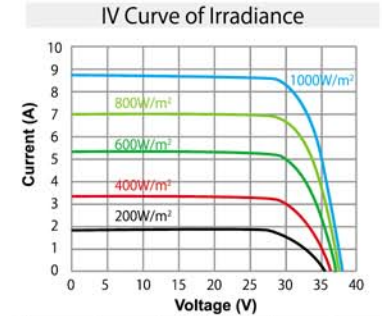
Quality production from Superior Team Work



Multi-Crystalline 72pcs 6x12 Series					
Model Number	TKSG-31501	TKSG-31001	TKSG-30501	TKSG-30001	TKSG-29501
Max Power Rating (W)	315	310	305	300	295
Max Power Voltage (V)	36.71	36.52	36.31	36.11	35.89
Max Power Current (A)	8.59	8.49	8.40	8.31	8.22
Open Circuit Voltage (V)	45.74	45.47	45.19	44.91	44.64
Short Circuit Voltage (A)	8.89	8.83	8.78	8.72	8.67
Module Efficiency (%)	16.14%	15.89%	15.63%	15.37%	15.12%
Nominal Ope. cell Temp	45±2°C	Temp Coeff. of Pmax		-0.53% /° K	
Temp Coeff. of Voc	-0.39% /° K	Dimensions (L x W x C)		1973×989×39mm	
Temp Coeff. of Isc	0.07% /° K	Weight		22.25kgs / 49.06 lbs	

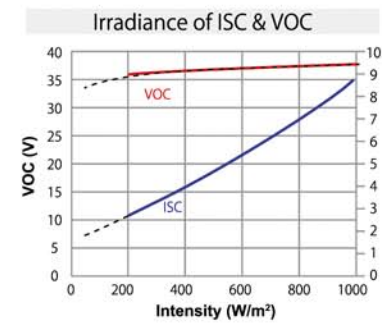


Multi-Crystalline 60pcs 6x10 Series					
Model Number	TKSA-26001	TKSA-25501	TKSA-25001	TKSA-24501	TKSA-24001
Max Power Rating (W)	260	255	250	245	240
Max Power Voltage (V)	31.38	31.03	30.72	30.37	30.04
Max Power Current (A)	8.29	8.22	8.14	8.07	7.99
Open Circuit Voltage (V)	38.02	37.77	37.52	37.27	37.02
Short Circuit Voltage (A)	8.72	8.67	8.63	8.58	8.54
Module Efficiency (%)	15.88%	15.58%	15.27%	14.97%	14.66%
Nominal Ope. cell Temp	45 ±2°C	Temp Coeff. of Pmax		-0.44% /° K	
Temp Coeff. of Voc	-0.32% /° K	Dimensions (L x W x C)		1655×989×39mm	
Temp Coeff. of Isc	0.04% /° K	Weight		19.5kgs / 43.33 lbs	



Intensity	V <sub>pm</sub>	I <sub>pm</sub>	P <sub>max</sub>	V <sub>oc</sub>	I <sub>sc</sub>
200	0.86	0.216	0.185	0.943	0.308
400	0.947	0.385	0.384	0.964	0.459
600	0.987	0.614	0.614	0.981	0.614
800	0.998	0.803	0.802	0.991	0.796
1000	1	1	1	1	1

Output Tolerance	0~3%
Module Operate Temp Range	-40°C ~+ 85°C
Max system Voltage	1000/600VDC
Max Mechanical Load	5400 pa
Salty Spray Corrosion Autentication	Level 6
Junction Box	IP65 / IP67
Frame	Aluminum Alloy
Cable	1m
Connector	MC4 Compatible



**Tainergy Tech Co., Ltd.**  
 No.5,Tzu-Chiang 1st Road,  
 Chungli Industrial Zone,  
 Taoyuan Hsien, Taiwan  
 TEL: +886-3-272-6688

**Tainergy Tech Japan K.K.**  
 Room 303, Noa Shiba-Daimon,  
 1-4-4 Shiba-Daimon, Minato-ku,  
 Tokyo, 105-0012 Japan  
 TEL: +81-3-6809-1331

E-MAIL: [tainergy@tainergy.com](mailto:tainergy@tainergy.com)

WEBSITE: [www.tainergy.com](http://www.tainergy.com)