

**For a Free Quote:**

Web: **EnergyPal.com/solar**

Call: **1-800-990-3725**

Email: **contact@energypal.com**

# **EnergyPal**

## **Solar Panel Guide Specification Data Sheet**

**Shenzhen Top Solar Energy Co., Ltd.**

**TS-S5M**

**TS-S5M**

Also available on the web at  
[EnergyPal.com/shenzhen-top-solar-energy-co-ltd-solar-panels/ts-s5m](http://EnergyPal.com/shenzhen-top-solar-energy-co-ltd-solar-panels/ts-s5m)

# MONOCRYSTALLINE SOLAR PANEL

## TS-S5M

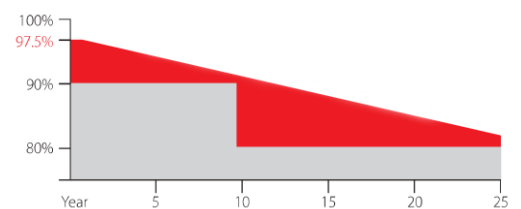


- High conversion efficiency
- Extremely environmental testing
- Salt mist corrosion resistant
- IP67 Junction box
- Strong compressive strength
- Fire test approved
- PID Resistant

## GIVING YOU MORE

- 3% positive tolerance
- Series of internal harsh tests
- Authorised photovoltaic certificates
- Linear performance warranty

Top Solar was established in 2008 and is a hi-tech corporation with its core business in R&D, manufacturing and sale of high efficiency solar panel.



[www.topsolar-energy.com](http://www.topsolar-energy.com)

Shenzhen Top Solar Energy Co.,Ltd.  
F4,Building C,Zhonghengxinda Industrial Park,  
Shajing Town,Baoan District,Shenzhen City,Guangdong Province,China  
Tel:86 755 85224431 Fax:86 755 28167996 Email:info@topsolar-energy.com

### Electrical Characteristics under STC\*

Model No.:	TS-S5M
Maximum Power-Pmax(Wp)	5W
Voltage at Maximum Power-Vmp(V)	16.8V
Current at Maximum Power-Imp(A)	0.3A
Open Circuit Voltage-Voc(V)	21V
Short Circuit Current-Isc(A)	0.32A
Solar Panel Efficiency(%)	9.3
Power Tolerance(%)	0/+3

### Mechanical Characteristics

Cell Type	Monocrystalline	156*156mm
Number of Cells	36(3*12)	
Dimension	310*190*25mm	
Weight	1.7kg	
Front Glass	Low Iron Tempered Glass	
Encapsulant	EVA	
Frame	Anodized Aluminum Alloy	

### Temperature Characteristics

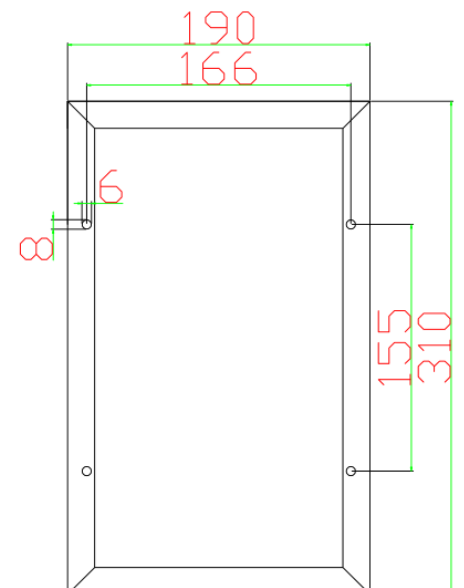
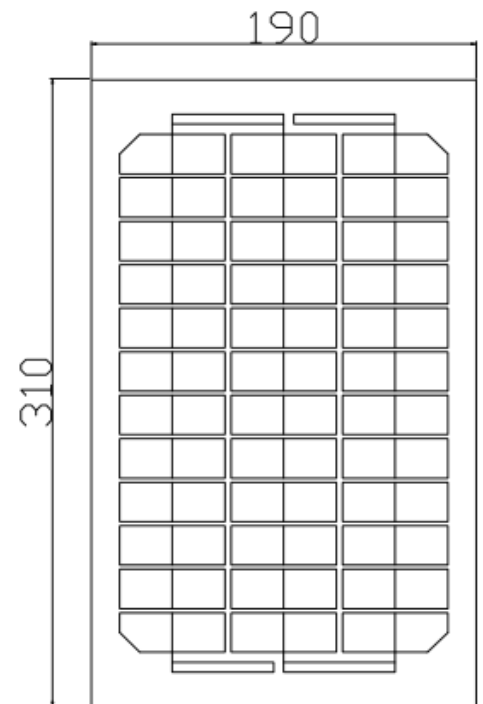
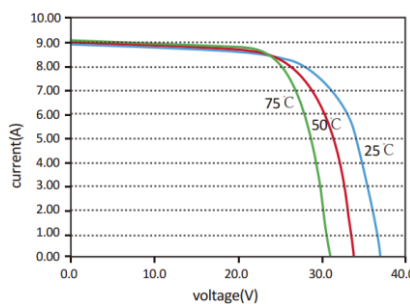
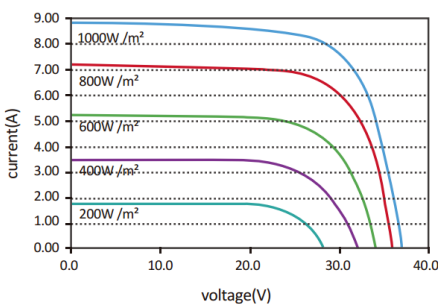
NOCT*	45±2°C
Temperature Coefficient of Pmax(%)	-0.40/°C
Temperature Coefficient of Voc(%)	-0.31/°C
Temperature Coefficient of Isc(%)	0.04/°C

### Maximum System Ratings

Operating Temperature	-40°C to +85°C
Maximum System Voltage	600V DC
Maximum Series Fuse Rating	15A

### Warranty

- 12 years product warranty
- 12 years warranty on 90% power output
- 25 years warranty on 80% power output



\*STC(Standard Testing Conditions):Irradiance 1000W/m<sup>2</sup>,cell temperature 25°C,AM=1.5 \*NOCT(Nominal Operating Cell Temperature):Irradiance 800W/m<sup>2</sup>, ambient temperature 20°C,wind speed 1m/s

The specifications in this datasheet are subjected to change without prior notice